



Full wwPDB X-ray Structure Validation Report ⓘ

Jan 20, 2026 – 06:16 pm GMT

PDB ID : 9S0H / pdb_00009s0h
Title : Dark-state of CBD of TtCarH mutant - H132A (SSX, DLS)
Authors : Poddar, H.; Coquelle, N.; Axford, D.; Rios-Santacruz, R.; Leys, D.; Owen, R.L.
Deposited on : 2025-07-16
Resolution : 2.00 Å(reported)

This is a Full wwPDB X-ray Structure Validation Report for a publicly released PDB entry.

We welcome your comments at validation@mail.wwpdb.org

A user guide is available at

<https://www.wwpdb.org/validation/2017/XrayValidationReportHelp>

with specific help available everywhere you see the ⓘ symbol.

The types of validation reports are described at

<http://www.wwpdb.org/validation/2017/FAQs#types>.

The following versions of software and data (see [references ⓘ](#)) were used in the production of this report:

MolProbity : 4-5-2 with Phenix2.0
Mogul : 1.8.4, CSD as541be (2020)
Xtriage (Phenix) : 2.0
EDS : 3.0
buster-report : 1.1.7 (2018)
Percentile statistics : 20231227.v01 (using entries in the PDB archive December 27th 2023)
CCP4 : 9.0.010 (Gargrove)
Density-Fitness : 1.0.12
Ideal geometry (proteins) : Engh & Huber (2001)
Ideal geometry (DNA, RNA) : Parkinson et al. (1996)
Validation Pipeline (wwPDB-VP) : 2.47

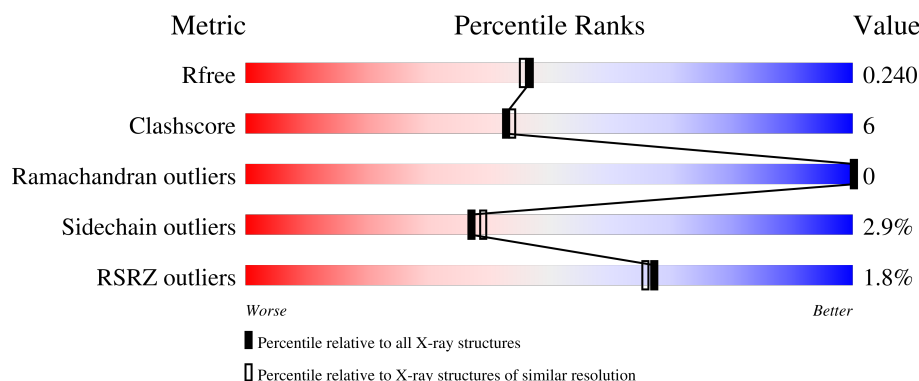
1 Overall quality at a glance

The following experimental techniques were used to determine the structure:

X-RAY DIFFRACTION

The reported resolution of this entry is 2.00 Å.

Percentile scores (ranging between 0-100) for global validation metrics of the entry are shown in the following graphic. The table shows the number of entries on which the scores are based.



Metric	Whole archive (#Entries)	Similar resolution (#Entries, resolution range(Å))
R_{free}	164625	9409 (2.00-2.00)
Clashscore	180529	10737 (2.00-2.00)
Ramachandran outliers	177936	10628 (2.00-2.00)
Sidechain outliers	177891	10627 (2.00-2.00)
RSRZ outliers	164620	9409 (2.00-2.00)

The table below summarises the geometric issues observed across the polymeric chains and their fit to the electron density. The red, orange, yellow and green segments of the lower bar indicate the fraction of residues that contain outliers for ≥ 3 , 2, 1 and 0 types of geometric quality criteria respectively. A grey segment represents the fraction of residues that are not modelled. The numeric value for each fraction is indicated below the corresponding segment, with a dot representing fractions $\leq 5\%$. The upper red bar (where present) indicates the fraction of residues that have poor fit to the electron density. The numeric value is given above the bar.

Mol	Chain	Length	Quality of chain
1	A	215	
1	B	215	
1	C	215	
1	D	215	

2 Entry composition

There are 4 unique types of molecules in this entry. The entry contains 6737 atoms, of which 0 are hydrogens and 0 are deuteriums.

In the tables below, the ZeroOcc column contains the number of atoms modelled with zero occupancy, the AltConf column contains the number of residues with at least one atom in alternate conformation and the Trace column contains the number of residues modelled with at most 2 atoms.

- Molecule 1 is a protein called Probable transcriptional regulator.

Mol	Chain	Residues	Atoms					ZeroOcc	AltConf	Trace
1	A	197	Total	C	N	O	S	0	1	0
			1501	964	271	264	2			
1	B	196	Total	C	N	O	S	0	1	0
			1490	958	267	263	2			
1	C	195	Total	C	N	O	S	0	2	0
			1484	952	268	262	2			
1	D	197	Total	C	N	O	S	0	1	0
			1498	964	268	264	2			

There are 32 discrepancies between the modelled and reference sequences:

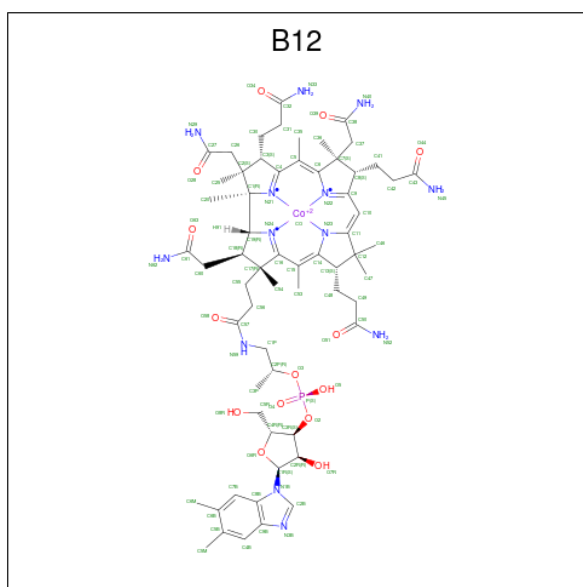
Chain	Residue	Modelled	Actual	Comment	Reference
A	132	ALA	HIS	engineered mutation	UNP Q746J7
A	286	GLY	-	expression tag	UNP Q746J7
A	287	HIS	-	expression tag	UNP Q746J7
A	288	HIS	-	expression tag	UNP Q746J7
A	289	HIS	-	expression tag	UNP Q746J7
A	290	HIS	-	expression tag	UNP Q746J7
A	291	HIS	-	expression tag	UNP Q746J7
A	292	HIS	-	expression tag	UNP Q746J7
B	132	ALA	HIS	engineered mutation	UNP Q746J7
B	286	GLY	-	expression tag	UNP Q746J7
B	287	HIS	-	expression tag	UNP Q746J7
B	288	HIS	-	expression tag	UNP Q746J7
B	289	HIS	-	expression tag	UNP Q746J7
B	290	HIS	-	expression tag	UNP Q746J7
B	291	HIS	-	expression tag	UNP Q746J7
B	292	HIS	-	expression tag	UNP Q746J7
C	132	ALA	HIS	engineered mutation	UNP Q746J7
C	286	GLY	-	expression tag	UNP Q746J7
C	287	HIS	-	expression tag	UNP Q746J7
C	288	HIS	-	expression tag	UNP Q746J7
C	289	HIS	-	expression tag	UNP Q746J7

Continued on next page...

Continued from previous page...

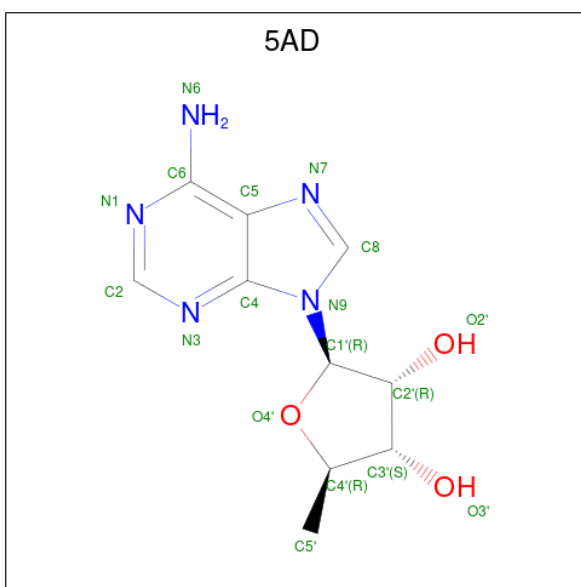
Chain	Residue	Modelled	Actual	Comment	Reference
C	290	HIS	-	expression tag	UNP Q746J7
C	291	HIS	-	expression tag	UNP Q746J7
C	292	HIS	-	expression tag	UNP Q746J7
D	132	ALA	HIS	engineered mutation	UNP Q746J7
D	286	GLY	-	expression tag	UNP Q746J7
D	287	HIS	-	expression tag	UNP Q746J7
D	288	HIS	-	expression tag	UNP Q746J7
D	289	HIS	-	expression tag	UNP Q746J7
D	290	HIS	-	expression tag	UNP Q746J7
D	291	HIS	-	expression tag	UNP Q746J7
D	292	HIS	-	expression tag	UNP Q746J7

- Molecule 2 is COBALAMIN (CCD ID: B12) (formula: $C_{62}H_{89}CoN_{13}O_{14}P$) (labeled as "Ligand of Interest" by depositor).



Mol	Chain	Residues	Atoms						ZeroOcc	AltConf
2	A	1	Total 91	C 62	Co 1	N 13	O 14	P 1	0	0
2	B	1	Total 91	C 62	Co 1	N 13	O 14	P 1	0	0
2	C	1	Total 91	C 62	Co 1	N 13	O 14	P 1	0	0
2	D	1	Total 91	C 62	Co 1	N 13	O 14	P 1	0	0

- Molecule 3 is 5'-DEOXYADENOSINE (CCD ID: 5AD) (formula: $C_{10}H_{13}N_5O_3$) (labeled as "Ligand of Interest" by depositor).



Mol	Chain	Residues	Atoms				ZeroOcc	AltConf
3	A	1	Total	C	N	O	0	0
			18	10	5	3		
3	B	1	Total	C	N	O	0	0
			18	10	5	3		
3	C	1	Total	C	N	O	0	0
			18	10	5	3		
3	D	1	Total	C	N	O	0	0
			18	10	5	3		


- Molecule 4 is water.

Mol	Chain	Residues	Atoms		ZeroOcc	AltConf
4	A	76	Total	O	0	0
			76	76		
4	B	101	Total	O	0	0
			101	101		
4	C	84	Total	O	0	0
			84	84		
4	D	67	Total	O	0	0
			67	67		

3 Residue-property plots [i](#)


These plots are drawn for all protein, RNA, DNA and oligosaccharide chains in the entry. The first graphic for a chain summarises the proportions of the various outlier classes displayed in the second graphic. The second graphic shows the sequence view annotated by issues in geometry and electron density. Residues are color-coded according to the number of geometric quality criteria for which they contain at least one outlier: green = 0, yellow = 1, orange = 2 and red = 3 or more. A red dot above a residue indicates a poor fit to the electron density ($RSRZ > 2$). Stretches of 2 or more consecutive residues without any outlier are shown as a green connector. Residues present in the sample, but not in the model, are shown in grey.

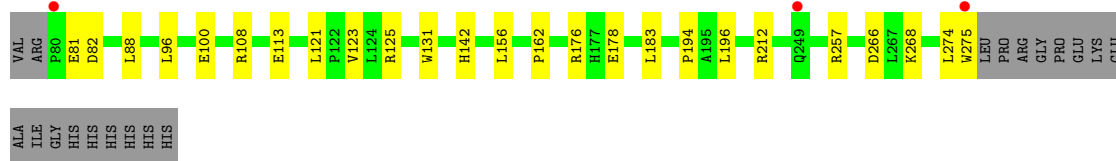
- Molecule 1: Probable transcriptional regulator

Chain A: 




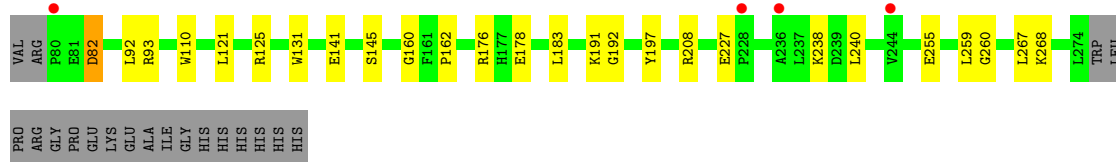
- Molecule 1: Probable transcriptional regulator

Chain B: 




- Molecule 1: Probable transcriptional regulator

Chain C: 



- Molecule 1: Probable transcriptional regulator

Chain D: 



4 Data and refinement statistics

Property	Value	Source
Space group	P 21 21 21	Depositor
Cell constants a, b, c, α , β , γ	64.50Å 71.47Å 206.50Å 90.00° 90.00° 90.00°	Depositor
Resolution (Å)	54.70 – 2.00 54.70 – 2.00	Depositor EDS
% Data completeness (in resolution range)	99.1 (54.70-2.00) 99.1 (54.70-2.00)	Depositor EDS
R_{merge}	(Not available)	Depositor
R_{sym}	(Not available)	Depositor
$\langle I/\sigma(I) \rangle$ ¹	1.09 (at 2.00Å)	Xtriage
Refinement program	PHENIX 1.19.2_4158	Depositor
R, R_{free}	0.200 , 0.240 0.201 , 0.240	Depositor DCC
R_{free} test set	3218 reflections (4.92%)	wwPDB-VP
Wilson B-factor (Å ²)	28.5	Xtriage
Anisotropy	0.095	Xtriage
Bulk solvent k_{sol} (e/Å ³), B_{sol} (Å ²)	0.30 , 49.0	EDS
L-test for twinning ²	$\langle L \rangle = 0.48$, $\langle L^2 \rangle = 0.31$	Xtriage
Estimated twinning fraction	No twinning to report.	Xtriage
F_o, F_c correlation	0.95	EDS
Total number of atoms	6737	wwPDB-VP
Average B, all atoms (Å ²)	33.0	wwPDB-VP

Xtriage's analysis on translational NCS is as follows: *The largest off-origin peak in the Patterson function is 6.44% of the height of the origin peak. No significant pseudotranslation is detected.*

¹Intensities estimated from amplitudes.

²Theoretical values of $\langle |L| \rangle$, $\langle L^2 \rangle$ for acentric reflections are 0.5, 0.333 respectively for untwinned datasets, and 0.375, 0.2 for perfectly twinned datasets.

5 Model quality [i](#)

5.1 Standard geometry [i](#)

Bond lengths and bond angles in the following residue types are not validated in this section: B12, 5AD

The Z score for a bond length (or angle) is the number of standard deviations the observed value is removed from the expected value. A bond length (or angle) with $|Z| > 5$ is considered an outlier worth inspection. RMSZ is the root-mean-square of all Z scores of the bond lengths (or angles).

Mol	Chain	Bond lengths		Bond angles	
		RMSZ	$\# Z > 5$	RMSZ	$\# Z > 5$
1	A	0.32	0/1540	0.47	0/2095
1	B	0.32	0/1529	0.52	0/2080
1	C	0.30	0/1524	0.48	0/2071
1	D	0.30	0/1537	0.47	0/2091
All	All	0.31	0/6130	0.49	0/8337

There are no bond length outliers.

There are no bond angle outliers.

There are no chirality outliers.

There are no planarity outliers.

5.2 Too-close contacts [i](#)

In the following table, the Non-H and H(model) columns list the number of non-hydrogen atoms and hydrogen atoms in the chain respectively. The H(added) column lists the number of hydrogen atoms added and optimized by MolProbity. The Clashes column lists the number of clashes within the asymmetric unit, whereas Symm-Clashes lists symmetry-related clashes.

Mol	Chain	Non-H	H(model)	H(added)	Clashes	Symm-Clashes
1	A	1501	0	1534	16	0
1	B	1490	0	1522	19	0
1	C	1484	0	1525	20	0
1	D	1498	0	1533	7	0
2	A	91	0	88	8	0
2	B	91	0	88	8	0
2	C	91	0	88	9	0
2	D	91	0	88	8	0
3	A	18	0	12	1	0

Continued on next page...

Continued from previous page...

Mol	Chain	Non-H	H(model)	H(added)	Clashes	Symm-Clashes
3	B	18	0	12	3	0
3	C	18	0	12	2	0
3	D	18	0	12	0	0
4	A	76	0	0	2	0
4	B	101	0	0	7	0
4	C	84	0	0	2	0
4	D	67	0	0	1	0
All	All	6737	0	6514	79	0

The all-atom clashscore is defined as the number of clashes found per 1000 atoms (including hydrogen atoms). The all-atom clashscore for this structure is 6.

All (79) close contacts within the same asymmetric unit are listed below, sorted by their clash magnitude.

Atom-1	Atom-2	Interatomic distance (Å)	Clash overlap (Å)
1:D:178:GLU:HG2	2:D:301:B12:H522	1.48	0.77
1:C:121:LEU:HD21	1:C:183:LEU:HD11	1.74	0.69
2:A:301:B12:H3	2:A:301:B12:H291	1.61	0.66
1:A:274:LEU:O	1:A:275:TRP:HB2	1.95	0.65
1:B:257:ARG:NH2	4:B:403:HOH:O	2.29	0.64
1:C:125:ARG:NH2	2:C:301:B12:O5	2.30	0.63
1:C:82:ASP:N	1:C:82:ASP:OD1	2.31	0.63
2:D:301:B12:H2B	2:D:301:B12:O4	2.01	0.60
1:A:176:ARG:H	2:A:301:B12:H452	1.51	0.57
2:A:301:B12:H3	2:A:301:B12:N29	2.20	0.57
2:C:301:B12:H362	2:C:301:B12:H351	1.87	0.57
1:B:131:TRP:CZ2	3:B:302:5AD:H8	2.39	0.56
1:A:178:GLU:HG2	2:A:301:B12:H522	1.70	0.56
2:A:301:B12:H362	2:A:301:B12:H351	1.88	0.55
1:B:178:GLU:H	2:B:301:B12:H522	1.55	0.55
1:A:178:GLU:H	2:A:301:B12:H522	1.54	0.54
2:A:301:B12:H531	2:A:301:B12:H552	1.90	0.54
2:C:301:B12:H3	2:C:301:B12:H291	1.72	0.54
2:C:301:B12:H3	2:C:301:B12:N29	2.23	0.54
1:D:178:GLU:HB2	1:D:197:TYR:OH	2.08	0.53
1:D:249:GLN:HG3	2:D:301:B12:O5	2.08	0.53
1:B:82:ASP:N	4:B:402:HOH:O	2.28	0.53
1:B:131:TRP:CD2	3:B:302:5AD:H3'	2.44	0.52
1:B:268:LYS:HG2	4:B:432:HOH:O	2.09	0.52
2:B:301:B12:H362	2:B:301:B12:H351	1.91	0.52
2:D:301:B12:H362	2:D:301:B12:H351	1.92	0.52

Continued on next page...

Continued from previous page...

Atom-1	Atom-2	Interatomic distance (Å)	Clash overlap (Å)
1:A:121:LEU:HD21	1:A:183:LEU:HD11	1.91	0.51
1:B:108:ARG:NE	4:B:404:HOH:O	2.30	0.51
1:D:107:LEU:HD13	1:D:115:VAL:HG11	1.93	0.50
1:A:157:ASP:OD1	4:A:401:HOH:O	2.20	0.49
1:A:160:GLY:H	1:C:160:GLY:H	1.60	0.49
2:D:301:B12:H552	2:D:301:B12:H531	1.94	0.48
1:A:192:GLY:HA3	1:C:162:PRO:HB3	1.96	0.48
2:A:301:B12:H91	2:A:301:B12:H262	1.63	0.47
1:B:88:LEU:HD13	1:B:123:VAL:HG13	1.96	0.47
1:B:121:LEU:HD21	1:B:183:LEU:HD11	1.97	0.47
1:B:81:GLU:HB3	4:B:401:HOH:O	2.14	0.47
2:C:301:B12:H8	2:C:301:B12:O39	2.15	0.46
1:D:108:ARG:NH1	4:D:407:HOH:O	2.47	0.46
2:B:301:B12:H3	2:B:301:B12:N29	2.31	0.46
1:C:208:ARG:HB2	1:C:240:LEU:HD23	1.97	0.46
2:C:301:B12:H552	2:C:301:B12:H531	1.96	0.46
1:B:121:LEU:O	1:B:125:ARG:HG3	2.16	0.46
1:C:238:LYS:HG3	1:C:260:GLY:HA3	1.98	0.46
1:C:141:GLU:HG3	3:C:302:5AD:O3'	2.17	0.45
1:C:255:GLU:HG3	1:C:259:LEU:HD23	1.99	0.44
1:B:108:ARG:HD2	1:C:110[B]:TRP:HZ3	1.83	0.44
1:B:162:PRO:O	1:B:194:PRO:HB3	2.17	0.44
1:B:275:TRP:HA	4:B:472:HOH:O	2.17	0.44
2:B:301:B12:H3	2:B:301:B12:H291	1.83	0.44
1:A:162:PRO:HB3	1:C:192:GLY:HA3	1.99	0.43
1:A:196:LEU:HD23	1:A:196:LEU:HA	1.86	0.43
2:B:301:B12:H363	2:B:301:B12:H411	1.64	0.43
1:A:178:GLU:HB2	1:A:197:TYR:OH	2.18	0.43
1:D:176:ARG:H	2:D:301:B12:H452	1.66	0.42
2:B:301:B12:H262	2:B:301:B12:H91	1.69	0.42
1:A:161:PHE:CE2	1:B:96:LEU:HB2	2.54	0.42
1:A:176:ARG:HH21	1:B:176:ARG:NH1	2.18	0.42
2:B:301:B12:H621	2:B:301:B12:H18	1.51	0.42
1:C:92:LEU:HD23	1:C:92:LEU:HA	1.90	0.42
1:C:121:LEU:O	1:C:125:ARG:HG3	2.19	0.42
1:A:189:ARG:NH1	4:A:402:HOH:O	2.41	0.42
1:A:131:TRP:CZ2	3:A:302:5AD:H8	2.55	0.41
1:C:176[A]:ARG:NH2	4:C:413:HOH:O	2.52	0.41
2:D:301:B12:H262	2:D:301:B12:H91	1.72	0.41
1:A:92:LEU:HD23	1:A:92:LEU:HA	1.85	0.41
1:C:131:TRP:CZ2	3:C:302:5AD:H8	2.55	0.41

Continued on next page...

Continued from previous page...

Atom-1	Atom-2	Interatomic distance (Å)	Clash overlap (Å)
2:C:301:B12:H262	2:C:301:B12:H91	1.74	0.41
2:C:301:B12:H473	2:C:301:B12:H481	1.85	0.41
1:B:131:TRP:CE3	3:B:302:5AD:H3'	2.56	0.41
1:C:191:LYS:HA	1:C:191:LYS:HD3	1.91	0.41
1:C:227:GLU:H	1:C:227:GLU:CD	2.29	0.41
1:C:93:ARG:HD3	4:C:423:HOH:O	2.20	0.40
1:B:196:LEU:HA	1:B:196:LEU:HD23	1.91	0.40
1:D:248:GLY:HA2	2:D:301:B12:O7R	2.21	0.40
2:B:301:B12:HM61	2:B:301:B12:HM53	1.91	0.40
1:B:81:GLU:O	4:B:401:HOH:O	2.22	0.40
1:C:145:SER:OG	2:C:301:B12:H532	2.22	0.40
1:C:178:GLU:HB2	1:C:197:TYR:OH	2.21	0.40

There are no symmetry-related clashes.

5.3 Torsion angles

5.3.1 Protein backbone

In the following table, the Percentiles column shows the percent Ramachandran outliers of the chain as a percentile score with respect to all X-ray entries followed by that with respect to entries of similar resolution.

The Analysed column shows the number of residues for which the backbone conformation was analysed, and the total number of residues.

Mol	Chain	Analysed	Favoured	Allowed	Outliers	Percentiles	
1	A	196/215 (91%)	192 (98%)	4 (2%)	0	100	100
1	B	195/215 (91%)	191 (98%)	4 (2%)	0	100	100
1	C	195/215 (91%)	190 (97%)	5 (3%)	0	100	100
1	D	196/215 (91%)	190 (97%)	6 (3%)	0	100	100
All	All	782/860 (91%)	763 (98%)	19 (2%)	0	100	100

There are no Ramachandran outliers to report.

5.3.2 Protein sidechains

In the following table, the Percentiles column shows the percent sidechain outliers of the chain as a percentile score with respect to all X-ray entries followed by that with respect to entries of similar

resolution.

The Analysed column shows the number of residues for which the sidechain conformation was analysed, and the total number of residues.

Mol	Chain	Analysed	Rotameric	Outliers	Percentiles	
1	A	146/160 (91%)	145 (99%)	1 (1%)	81	86
1	B	145/160 (91%)	138 (95%)	7 (5%)	21	19
1	C	145/160 (91%)	142 (98%)	3 (2%)	48	53
1	D	146/160 (91%)	140 (96%)	6 (4%)	26	25
All	All	582/640 (91%)	565 (97%)	17 (3%)	37	39

All (17) residues with a non-rotameric sidechain are listed below:

Mol	Chain	Res	Type
1	A	249	GLN
1	B	100	GLU
1	B	113	GLU
1	B	142	HIS
1	B	156	LEU
1	B	212	ARG
1	B	266	ASP
1	B	274	LEU
1	C	82	ASP
1	C	267	LEU
1	C	268	LYS
1	D	87	LEU
1	D	100	GLU
1	D	176	ARG
1	D	189	ARG
1	D	196	LEU
1	D	266	ASP

Sometimes sidechains can be flipped to improve hydrogen bonding and reduce clashes. All (2) such sidechains are listed below:

Mol	Chain	Res	Type
1	C	153	GLN
1	D	187	HIS

5.3.3 RNA ⓘ

There are no RNA molecules in this entry.

5.4 Non-standard residues in protein, DNA, RNA chains [i](#)

There are no non-standard protein/DNA/RNA residues in this entry.

5.5 Carbohydrates [i](#)

There are no oligosaccharides in this entry.

5.6 Ligand geometry [i](#)

8 ligands are modelled in this entry.

In the following table, the Counts columns list the number of bonds (or angles) for which Mogul statistics could be retrieved, the number of bonds (or angles) that are observed in the model and the number of bonds (or angles) that are defined in the Chemical Component Dictionary. The Link column lists molecule types, if any, to which the group is linked. The Z score for a bond length (or angle) is the number of standard deviations the observed value is removed from the expected value. A bond length (or angle) with $|Z| > 2$ is considered an outlier worth inspection. RMSZ is the root-mean-square of all Z scores of the bond lengths (or angles).

Mol	Type	Chain	Res	Link	Bond lengths			Bond angles		
					Counts	RMSZ	$\# Z > 2$	Counts	RMSZ	$\# Z > 2$
2	B12	C	301	1	90,101,101	1.06	4 (4%)	137,166,166	1.62	30 (21%)
3	5AD	C	302	-	17,20,20	1.27	3 (17%)	15,30,30	1.92	4 (26%)
2	B12	D	301	1	90,101,101	1.08	5 (5%)	137,166,166	1.64	27 (19%)
2	B12	A	301	1	90,101,101	1.06	3 (3%)	137,166,166	1.57	25 (18%)
3	5AD	A	302	-	17,20,20	1.21	3 (17%)	15,30,30	1.84	4 (26%)
3	5AD	D	302	-	17,20,20	1.12	1 (5%)	15,30,30	1.55	3 (20%)
2	B12	B	301	1	90,101,101	1.08	6 (6%)	137,166,166	1.77	27 (19%)
3	5AD	B	302	-	17,20,20	1.11	2 (11%)	15,30,30	1.47	4 (26%)

In the following table, the Chirals column lists the number of chiral outliers, the number of chiral centers analysed, the number of these observed in the model and the number defined in the Chemical Component Dictionary. Similar counts are reported in the Torsion and Rings columns. '-' means no outliers of that kind were identified.

Mol	Type	Chain	Res	Link	Chirals	Torsions	Rings
2	B12	C	301	1	-	6/52/223/223	0/3/11/11
3	5AD	C	302	-	-	0/0/20/20	0/3/3/3
2	B12	D	301	1	-	12/52/223/223	0/3/11/11
2	B12	A	301	1	-	14/52/223/223	0/3/11/11

Continued on next page...

Continued from previous page...

Mol	Type	Chain	Res	Link	Chirals	Torsions	Rings
3	5AD	A	302	-	-	0/0/20/20	0/3/3/3
3	5AD	D	302	-	-	0/0/20/20	0/3/3/3
2	B12	B	301	1	-	16/52/223/223	0/3/11/11
3	5AD	B	302	-	-	0/0/20/20	0/3/3/3

All (27) bond length outliers are listed below:

Mol	Chain	Res	Type	Atoms	Z	Observed(Å)	Ideal(Å)
2	C	301	B12	C14-N23	3.63	1.39	1.35
2	B	301	B12	C14-N23	3.62	1.39	1.35
2	A	301	B12	C54-C17	3.47	1.60	1.54
2	A	301	B12	C14-N23	3.47	1.39	1.35
2	B	301	B12	C35-C5	3.23	1.57	1.50
2	D	301	B12	C35-C5	3.17	1.57	1.50
2	D	301	B12	C14-N23	3.17	1.39	1.35
2	A	301	B12	C35-C5	3.13	1.57	1.50
3	C	302	5AD	C5-C4	3.04	1.49	1.40
2	D	301	B12	C54-C17	3.03	1.59	1.54
3	A	302	5AD	C5-C4	2.90	1.48	1.40
2	B	301	B12	C54-C17	2.82	1.59	1.54
2	B	301	B12	C55-C17	-2.79	1.48	1.54
2	C	301	B12	C35-C5	2.70	1.56	1.50
2	C	301	B12	C54-C17	2.68	1.59	1.54
3	D	302	5AD	C5-C4	2.67	1.48	1.40
3	B	302	5AD	C5-C4	2.57	1.47	1.40
3	C	302	5AD	C2-N3	2.35	1.35	1.32
2	D	301	B12	C6B-C5B	2.26	1.46	1.40
3	C	302	5AD	O4'-C1'	2.25	1.44	1.41
2	B	301	B12	C6B-C5B	2.24	1.46	1.40
3	A	302	5AD	O4'-C1'	2.15	1.44	1.41
3	A	302	5AD	C2-N3	2.15	1.35	1.32
3	B	302	5AD	C2-N3	2.11	1.35	1.32
2	D	301	B12	C48-C13	2.06	1.59	1.54
2	C	301	B12	C6B-C5B	2.05	1.46	1.40
2	B	301	B12	O51-C50	2.01	1.30	1.24

All (124) bond angle outliers are listed below:

Mol	Chain	Res	Type	Atoms	Z	Observed(°)	Ideal(°)
2	D	301	B12	C7B-C8B-C9B	5.67	126.15	120.54
2	B	301	B12	C1P-N59-C57	-5.66	110.37	122.69
2	C	301	B12	C7B-C8B-C9B	5.64	126.12	120.54

Continued on next page...

Continued from previous page...

Mol	Chain	Res	Type	Atoms	Z	Observed(°)	Ideal(°)
2	A	301	B12	C7B-C8B-C9B	5.04	125.53	120.54
3	C	302	5AD	C5'-C4'-C3'	-4.65	110.81	115.70
2	B	301	B12	C7B-C8B-C9B	4.63	125.12	120.54
2	B	301	B12	C55-C56-C57	-4.54	101.32	111.23
2	B	301	B12	C18-C17-C16	4.53	106.18	100.67
2	B	301	B12	C56-C55-C17	-4.43	106.98	115.52
2	A	301	B12	C55-C17-C16	4.38	125.30	116.65
2	A	301	B12	C2P-C1P-N59	-4.34	106.54	112.93
2	D	301	B12	C16-C15-C14	-4.21	114.86	121.25
2	B	301	B12	C54-C17-C18	-4.15	106.86	112.98
2	A	301	B12	C1P-N59-C57	-4.14	113.68	122.69
2	C	301	B12	C18-C17-C16	4.07	105.61	100.67
2	D	301	B12	C55-C17-C16	4.01	124.58	116.65
2	B	301	B12	C2-C1-C19	-3.92	112.42	118.60
2	C	301	B12	C55-C17-C16	3.86	124.28	116.65
2	B	301	B12	C15-C16-N24	3.83	127.94	122.42
2	D	301	B12	C1P-N59-C57	-3.82	114.38	122.69
2	B	301	B12	C1-C19-C18	-3.81	115.62	121.88
2	D	301	B12	C15-C16-N24	3.72	127.78	122.42
2	D	301	B12	C13-C14-C15	-3.67	118.70	124.32
3	B	302	5AD	N3-C2-N1	-3.62	123.01	128.68
2	C	301	B12	C2P-C1P-N59	-3.57	107.66	112.93
3	A	302	5AD	C3'-C2'-C1'	3.56	106.34	100.98
2	D	301	B12	C54-C17-C18	-3.55	107.74	112.98
2	C	301	B12	C15-C16-N24	3.53	127.51	122.42
2	B	301	B12	C17-C16-N24	-3.53	105.70	111.15
2	C	301	B12	C2-C1-C19	-3.52	113.05	118.60
2	C	301	B12	C56-C55-C17	-3.49	108.80	115.52
2	D	301	B12	O2-C3R-C2R	3.44	124.16	111.68
2	C	301	B12	C17-C16-N24	-3.43	105.86	111.15
2	D	301	B12	C54-C17-C16	-3.39	94.81	112.40
2	D	301	B12	C5B-C4B-C9B	-3.39	116.42	121.22
3	D	302	5AD	N3-C2-N1	-3.38	123.40	128.68
3	A	302	5AD	C5'-C4'-C3'	-3.33	112.20	115.70
3	A	302	5AD	N3-C2-N1	-3.32	123.49	128.68
2	B	301	B12	C2P-C1P-N59	-3.30	108.07	112.93
2	C	301	B12	C20-C1-C19	3.25	112.48	109.36
2	C	301	B12	C54-C17-C16	-3.25	95.55	112.40
2	B	301	B12	C16-C15-C14	-3.24	116.34	121.25
2	A	301	B12	C2-C1-C19	-3.24	113.49	118.60
2	B	301	B12	C55-C17-C16	3.22	123.02	116.65
2	D	301	B12	C56-C55-C17	-3.22	109.30	115.52

Continued on next page...

Continued from previous page...

Mol	Chain	Res	Type	Atoms	Z	Observed(°)	Ideal(°)
2	D	301	B12	C1-C19-C18	-3.21	116.62	121.88
2	C	301	B12	C5B-C4B-C9B	-3.20	116.69	121.22
2	D	301	B12	C18-C17-C16	3.18	104.53	100.67
2	B	301	B12	C13-C14-C15	-3.15	119.50	124.32
2	A	301	B12	C54-C17-C16	-3.13	96.16	112.40
2	B	301	B12	C54-C17-C16	-3.12	96.22	112.40
2	A	301	B12	C18-C17-C16	3.03	104.35	100.67
2	A	301	B12	C56-C55-C17	-3.02	109.70	115.52
2	B	301	B12	C5B-C4B-C9B	-3.01	116.96	121.22
2	C	301	B12	C54-C17-C18	-2.98	108.58	112.98
2	D	301	B12	C17-C16-N24	-2.96	106.59	111.15
2	A	301	B12	C36-C7-C37	2.95	115.67	110.80
3	C	302	5AD	C4-C5-N7	-2.94	106.33	109.40
3	C	302	5AD	N3-C2-N1	-2.91	124.13	128.68
2	A	301	B12	C5B-C4B-C9B	-2.89	117.13	121.22
3	C	302	5AD	C3'-C2'-C1'	2.88	105.32	100.98
2	D	301	B12	C3R-C2R-C1R	2.81	106.11	99.89
2	A	301	B12	C54-C17-C18	-2.77	108.89	112.98
2	B	301	B12	C13-C14-N23	2.75	112.84	109.10
3	D	302	5AD	C3'-C2'-C1'	2.74	105.10	100.98
2	B	301	B12	O2-C3R-C4R	-2.74	100.19	110.08
2	A	301	B12	C13-C14-C15	-2.67	120.24	124.32
2	C	301	B12	C2-C1-N21	2.65	105.47	101.77
2	C	301	B12	C16-C15-C14	-2.62	117.28	121.25
2	A	301	B12	C15-C16-N24	2.58	126.14	122.42
2	C	301	B12	C5M-C5B-C6B	-2.58	115.46	120.74
2	D	301	B12	C1-C2-C3	-2.56	98.33	101.60
2	A	301	B12	C17-C16-N24	-2.56	107.21	111.15
2	C	301	B12	C13-C14-N23	2.53	112.54	109.10
2	A	301	B12	C16-C15-C14	-2.53	117.42	121.25
2	C	301	B12	C7-C37-C38	-2.52	106.68	114.25
2	C	301	B12	O3-C2P-C1P	2.51	111.93	106.92
2	D	301	B12	C5M-C5B-C6B	-2.49	115.63	120.74
2	D	301	B12	C2-C3-C4	2.45	104.42	101.63
3	D	302	5AD	C4-C5-N7	-2.45	106.84	109.40
2	C	301	B12	O28-C27-N29	-2.44	115.84	122.50
2	D	301	B12	C41-C8-C9	-2.44	106.90	111.19
2	D	301	B12	O28-C27-N29	-2.40	115.94	122.50
2	C	301	B12	C1-C19-C18	-2.39	117.95	121.88
2	A	301	B12	C5M-C5B-C6B	-2.39	115.84	120.74
2	B	301	B12	C36-C7-C8	-2.37	107.69	112.08
2	A	301	B12	C37-C7-C8	-2.31	102.20	108.39

Continued on next page...

Continued from previous page...

Mol	Chain	Res	Type	Atoms	Z	Observed(°)	Ideal(°)
2	D	301	B12	C4B-C5B-C6B	2.29	123.76	119.91
2	D	301	B12	C13-C14-N23	2.27	112.19	109.10
2	C	301	B12	C48-C13-C12	-2.27	110.28	116.63
2	A	301	B12	C1-C19-C18	-2.26	118.17	121.88
2	C	301	B12	C4B-C5B-C6B	2.26	123.72	119.91
2	A	301	B12	C3R-C2R-C1R	2.26	104.89	99.89
2	C	301	B12	C55-C56-C57	-2.24	106.33	111.23
2	B	301	B12	C36-C7-C37	2.23	114.47	110.80
3	B	302	5AD	C4-C5-N7	-2.23	107.08	109.40
2	A	301	B12	C48-C13-C12	-2.23	110.39	116.63
2	A	301	B12	O28-C27-N29	-2.22	116.44	122.50
3	A	302	5AD	C4-C5-N7	-2.22	107.09	109.40
2	A	301	B12	C13-C14-N23	2.21	112.11	109.10
2	B	301	B12	C3R-C2R-C1R	2.19	104.74	99.89
2	C	301	B12	C36-C7-C37	2.18	114.40	110.80
2	B	301	B12	O28-C27-N29	-2.18	116.56	122.50
2	C	301	B12	C1-C2-C3	-2.15	98.85	101.60
2	C	301	B12	C12-C11-N23	2.14	114.81	111.83
2	B	301	B12	C1-C19-N24	-2.13	103.84	106.24
3	B	302	5AD	C3'-C2'-C1'	2.12	104.17	100.98
2	B	301	B12	C20-C1-C19	-2.11	107.32	109.36
2	C	301	B12	C42-C43-N45	2.10	123.04	116.51
2	B	301	B12	C31-C32-N33	2.09	123.03	116.51
2	B	301	B12	O39-C38-C37	-2.08	115.40	121.99
2	D	301	B12	O28-C27-C26	2.08	128.57	121.99
2	D	301	B12	C37-C7-C8	-2.08	102.82	108.39
3	B	302	5AD	C2-N1-C6	2.06	122.28	118.75
2	A	301	B12	O2-C3R-C4R	-2.04	102.70	110.08
2	A	301	B12	C4B-C5B-C6B	2.04	123.35	119.91
2	B	301	B12	O3-C2P-C1P	-2.03	102.87	106.92
2	D	301	B12	C42-C43-N45	2.02	122.81	116.51
2	C	301	B12	C13-C14-C15	-2.02	121.23	124.32
2	D	301	B12	O51-C50-C49	-2.01	115.16	121.07
2	C	301	B12	C31-C32-N33	2.01	122.77	116.51
2	C	301	B12	C4B-C9B-C8B	-2.01	119.05	121.10
2	D	301	B12	C49-C48-C13	-2.01	108.94	114.73
2	A	301	B12	C49-C48-C13	-2.00	108.95	114.73

There are no chirality outliers.

All (48) torsion outliers are listed below:

Mol	Chain	Res	Type	Atoms
2	A	301	B12	C1P-C2P-O3-P
2	A	301	B12	C3P-C2P-O3-P
2	B	301	B12	C18-C60-C61-O63
2	B	301	B12	C18-C60-C61-N62
2	B	301	B12	N59-C1P-C2P-O3
2	C	301	B12	C3P-C2P-O3-P
2	C	301	B12	C3R-C4R-C5R-O8R
2	D	301	B12	C2R-C3R-O2-P
2	C	301	B12	O6R-C4R-C5R-O8R
2	A	301	B12	O6R-C4R-C5R-O8R
2	A	301	B12	C3R-C4R-C5R-O8R
2	D	301	B12	C4R-C3R-O2-P
2	D	301	B12	O6R-C4R-C5R-O8R
2	C	301	B12	C1P-C2P-O3-P
2	B	301	B12	C3R-O2-P-O3
2	B	301	B12	N59-C1P-C2P-C3P
2	A	301	B12	C2-C26-C27-N29
2	A	301	B12	C48-C49-C50-O51
2	D	301	B12	C48-C49-C50-O51
2	D	301	B12	C48-C49-C50-N52
2	A	301	B12	C48-C49-C50-N52
2	B	301	B12	C1P-C2P-O3-P
2	A	301	B12	N59-C1P-C2P-C3P
2	B	301	B12	C48-C49-C50-O51
2	A	301	B12	C17-C18-C60-C61
2	A	301	B12	C2P-C1P-N59-C57
2	A	301	B12	C42-C41-C8-C9
2	B	301	B12	C42-C41-C8-C9
2	B	301	B12	C48-C49-C50-N52
2	D	301	B12	N59-C1P-C2P-C3P
2	A	301	B12	C2-C26-C27-O28
2	A	301	B12	C19-C18-C60-C61
2	B	301	B12	C17-C18-C60-C61
2	C	301	B12	C17-C18-C60-C61
2	C	301	B12	C19-C18-C60-C61
2	A	301	B12	C38-C37-C7-C36
2	B	301	B12	C3R-O2-P-O5
2	B	301	B12	C19-C18-C60-C61
2	D	301	B12	C17-C18-C60-C61
2	D	301	B12	C19-C18-C60-C61
2	D	301	B12	C2P-C1P-N59-C57
2	D	301	B12	C42-C41-C8-C9
2	D	301	B12	C4-C3-C30-C31

Continued on next page...

Continued from previous page...

Mol	Chain	Res	Type	Atoms
2	D	301	B12	C18-C60-C61-O63
2	B	301	B12	C3P-C2P-O3-P
2	B	301	B12	C55-C56-C57-O58
2	B	301	B12	C55-C56-C57-N59
2	B	301	B12	C38-C37-C7-C36

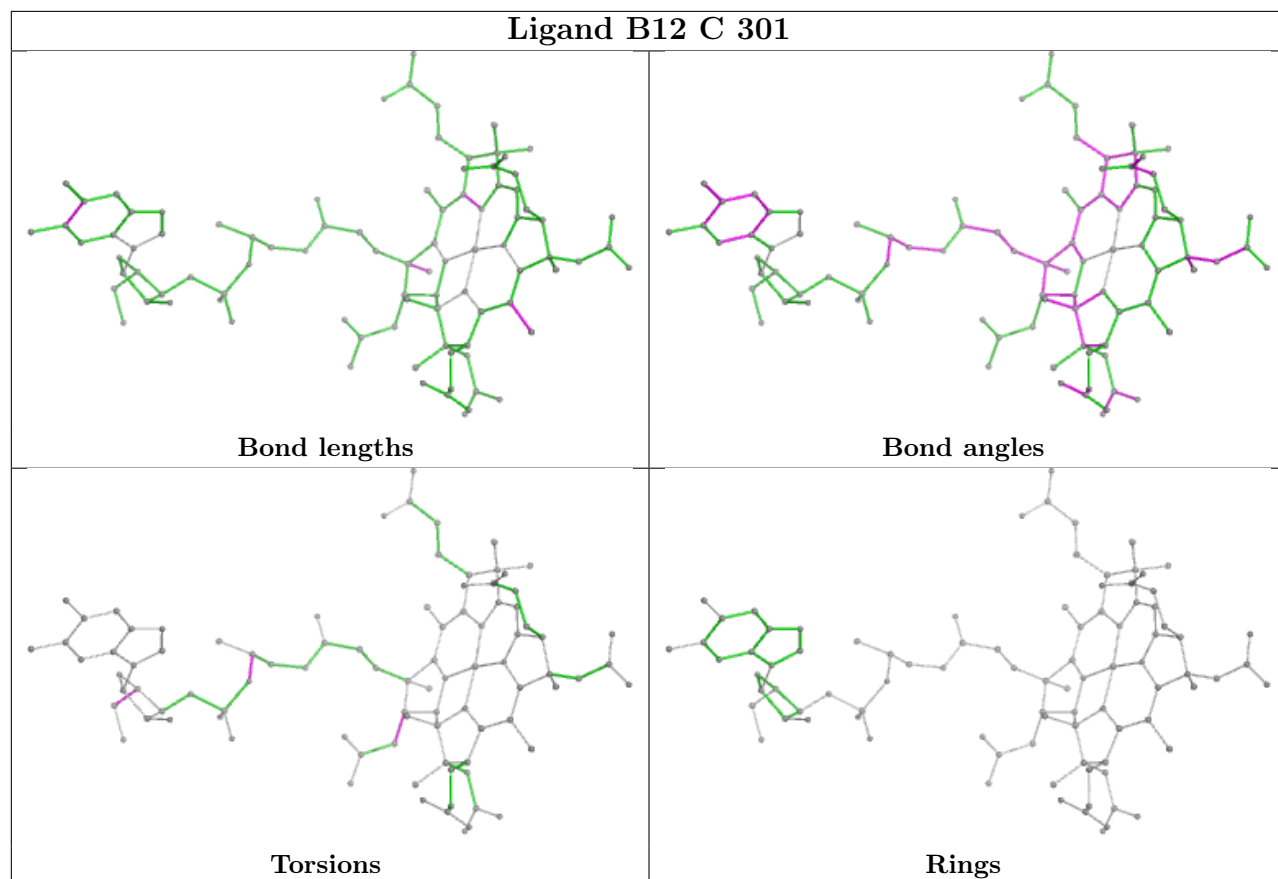
There are no ring outliers.

7 monomers are involved in 39 short contacts:

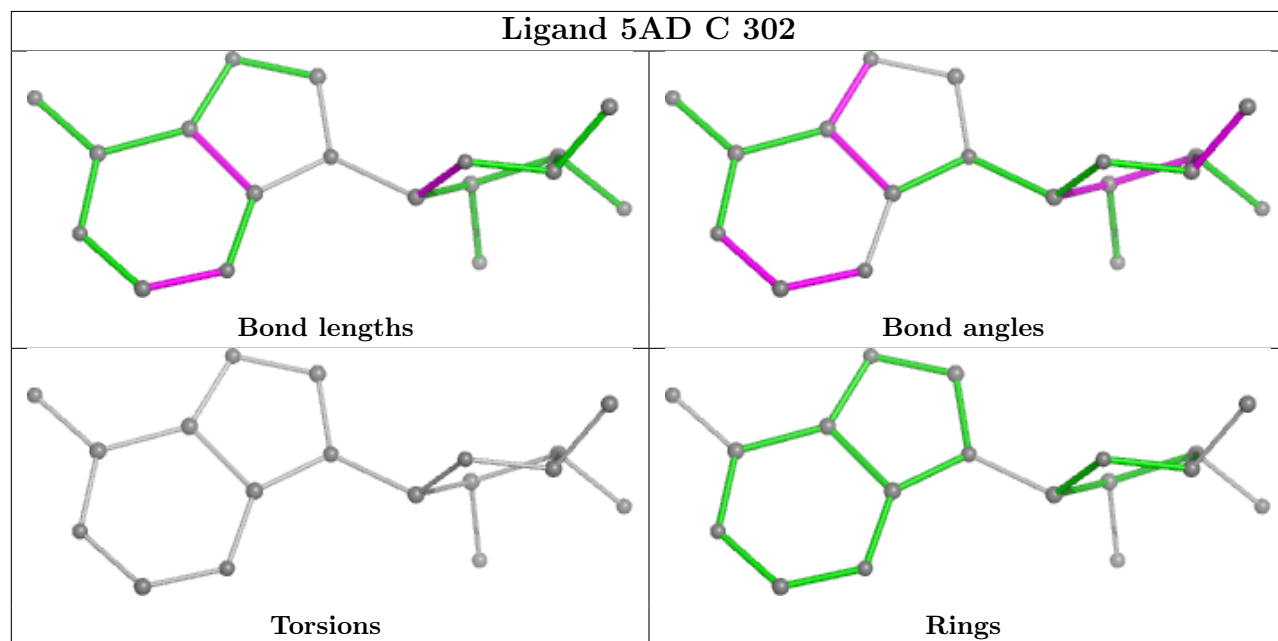
Mol	Chain	Res	Type	Clashes	Symm-Clashes
2	C	301	B12	9	0
3	C	302	5AD	2	0
2	D	301	B12	8	0
2	A	301	B12	8	0
3	A	302	5AD	1	0
2	B	301	B12	8	0
3	B	302	5AD	3	0

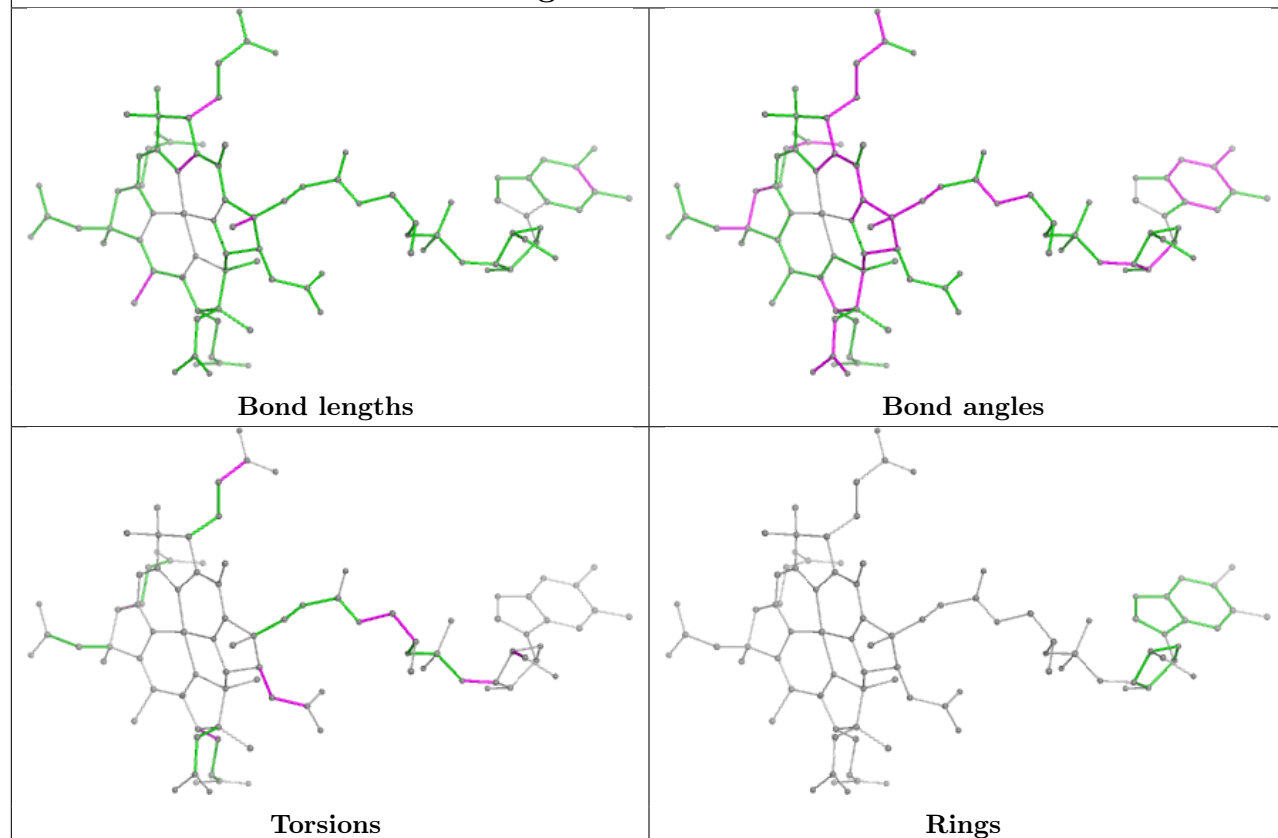
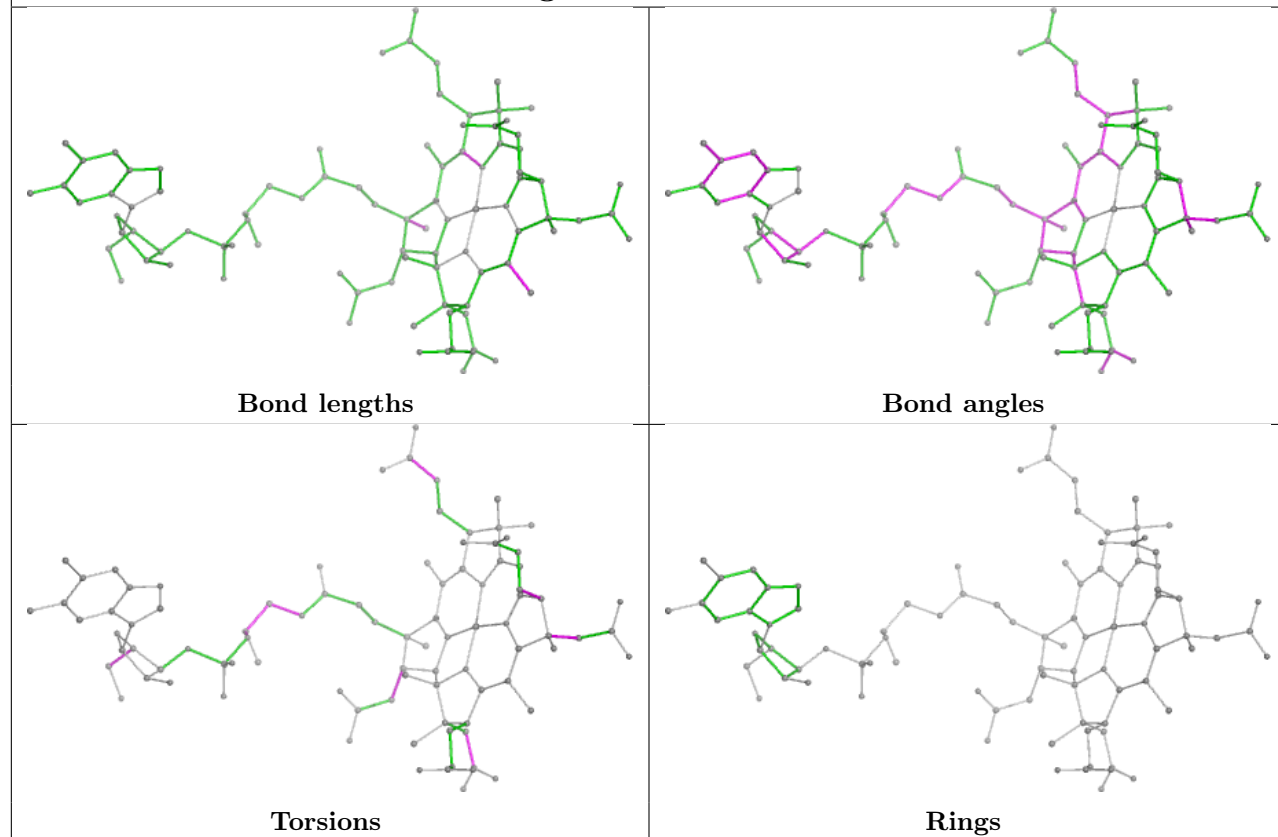
The following is a two-dimensional graphical depiction of Mogul quality analysis of bond lengths, bond angles, torsion angles, and ring geometry for all instances of the Ligand of Interest. In addition, ligands with molecular weight > 250 and outliers as shown on the validation Tables will also be included. For torsion angles, if less than 5% of the Mogul distribution of torsion angles is within 10 degrees of the torsion angle in question, then that torsion angle is considered an outlier. Any bond that is central to one or more torsion angles identified as an outlier by Mogul will be highlighted in the graph. For rings, the root-mean-square deviation (RMSD) between the ring in question and similar rings identified by Mogul is calculated over all ring torsion angles. If the average RMSD is greater than 60 degrees and the minimal RMSD between the ring in question and any Mogul-identified rings is also greater than 60 degrees, then that ring is considered an outlier. The outliers are highlighted in purple. The color gray indicates Mogul did not find sufficient equivalents in the CSD to analyse the geometry.

Ligand B12 C 301

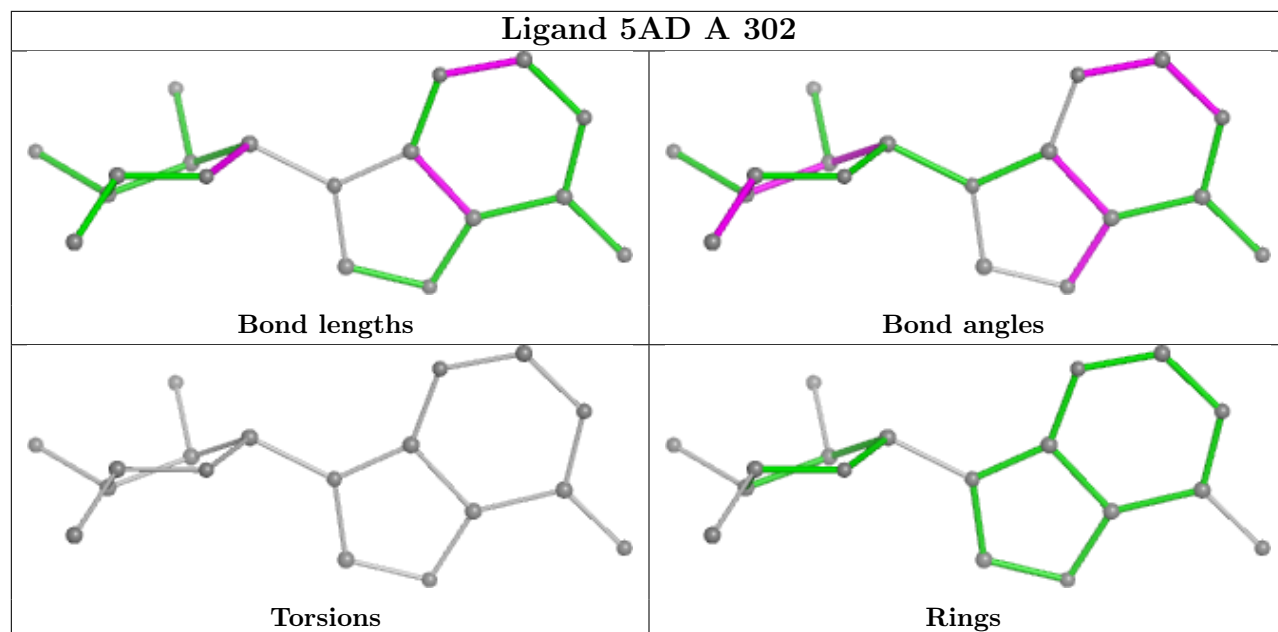


Ligand 5AD C 302

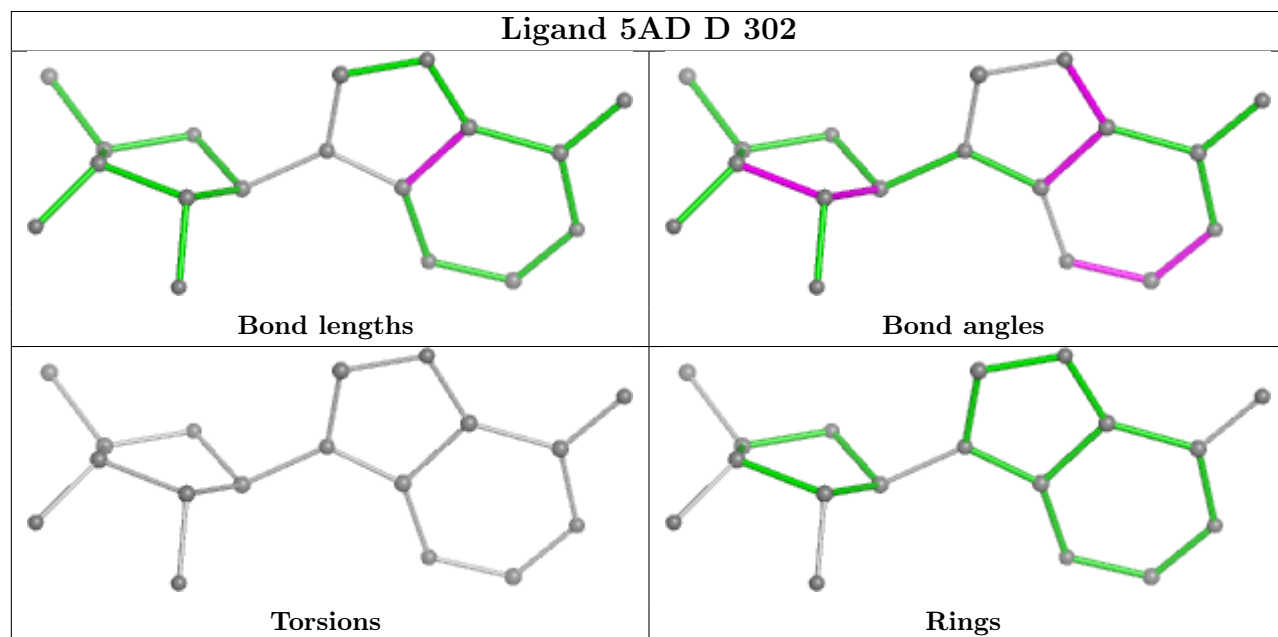


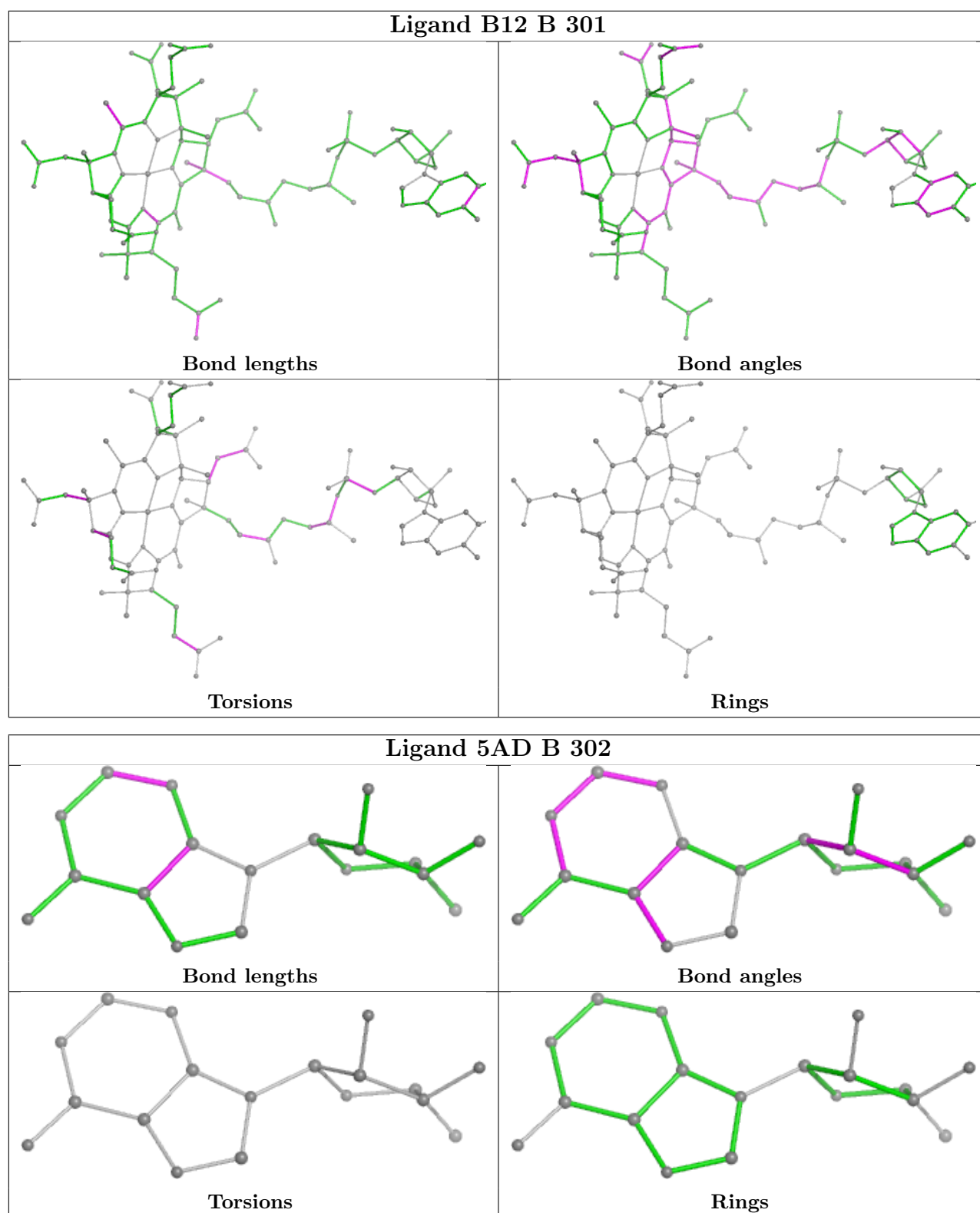
Ligand B12 D 301**Ligand B12 A 301**

Ligand 5AD A 302



Ligand 5AD D 302





5.7 Other polymers ⓘ

There are no such residues in this entry.

5.8 Polymer linkage issues ⓘ

There are no chain breaks in this entry.

6 Fit of model and data [i](#)

6.1 Protein, DNA and RNA chains [i](#)

In the following table, the column labelled ‘#RSRZ > 2’ contains the number (and percentage) of RSRZ outliers, followed by percent RSRZ outliers for the chain as percentile scores relative to all X-ray entries and entries of similar resolution. The OWAB column contains the minimum, median, 95th percentile and maximum values of the occupancy-weighted average B-factor per residue. The column labelled ‘Q < 0.9’ lists the number of (and percentage) of residues with an average occupancy less than 0.9.

Mol	Chain	Analysed	<RSRZ>	#RSRZ>2	OWAB(Å ²)	Q<0.9
1	A	197/215 (91%)	-0.17	1 (0%) 87 86	15, 28, 57, 78	1 (0%)
1	B	196/215 (91%)	-0.11	3 (1%) 71 70	14, 27, 53, 101	1 (0%)
1	C	195/215 (90%)	0.22	4 (2%) 63 62	15, 32, 67, 122	2 (1%)
1	D	197/215 (91%)	0.12	6 (3%) 52 51	16, 32, 59, 125	1 (0%)
All	All	785/860 (91%)	0.02	14 (1%) 67 66	14, 29, 60, 125	5 (0%)

All (14) RSRZ outliers are listed below:

Mol	Chain	Res	Type	RSRZ
1	D	80	PRO	4.6
1	B	275	TRP	3.8
1	C	80	PRO	3.6
1	D	276	LEU	2.9
1	A	275	TRP	2.5
1	B	80	PRO	2.4
1	C	236	ALA	2.4
1	D	81	GLU	2.2
1	C	228	PRO	2.2
1	C	244	VAL	2.2
1	D	109	PHE	2.1
1	B	249	GLN	2.1
1	D	275	TRP	2.0
1	D	123	VAL	2.0

6.2 Non-standard residues in protein, DNA, RNA chains [i](#)

There are no non-standard protein/DNA/RNA residues in this entry.

6.3 Carbohydrates [i](#)

There are no oligosaccharides in this entry.

6.4 Ligands [i](#)

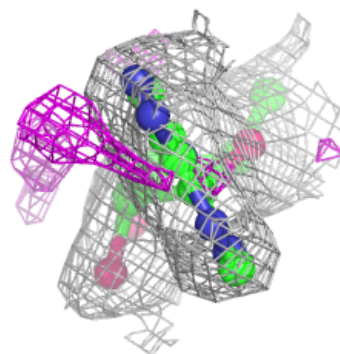
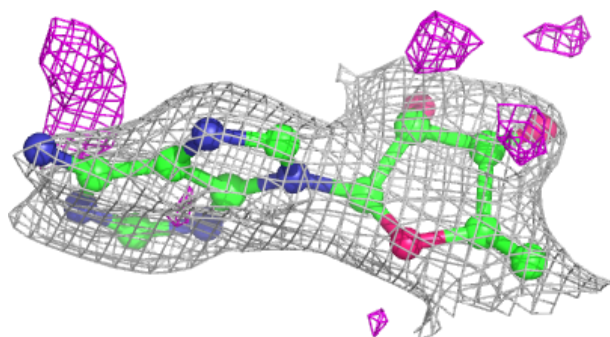
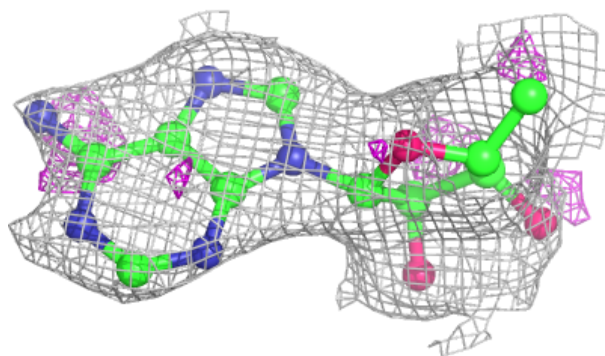
In the following table, the Atoms column lists the number of modelled atoms in the group and the number defined in the chemical component dictionary. The B-factors column lists the minimum, median, 95th percentile and maximum values of B factors of atoms in the group. The column labelled 'Q< 0.9' lists the number of atoms with occupancy less than 0.9.

Mol	Type	Chain	Res	Atoms	RSCC	RSR	B-factors(\AA^2)	Q<0.9
3	5AD	D	302	18/18	0.90	0.08	37,42,45,45	0
3	5AD	B	302	18/18	0.92	0.06	23,33,38,39	0
3	5AD	C	302	18/18	0.92	0.07	22,25,29,30	0
3	5AD	A	302	18/18	0.92	0.07	18,25,28,29	0
2	B12	D	301	91/91	0.94	0.09	18,36,49,69	0
2	B12	C	301	91/91	0.96	0.08	15,25,44,58	0
2	B12	A	301	91/91	0.96	0.07	15,25,48,55	0
2	B12	B	301	91/91	0.96	0.07	14,26,39,52	0

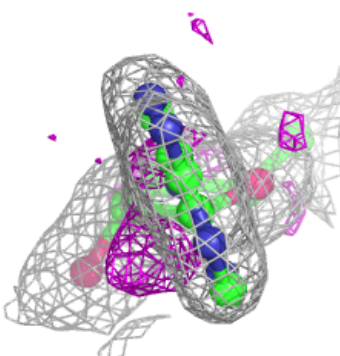
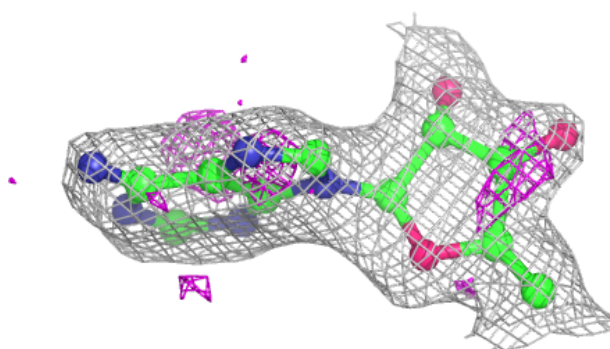
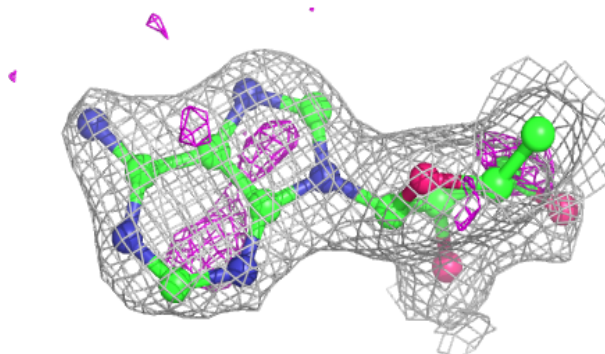
The following is a graphical depiction of the model fit to experimental electron density of all instances of the Ligand of Interest. In addition, ligands with molecular weight > 250 and outliers as shown on the geometry validation Tables will also be included. Each fit is shown from different orientation to approximate a three-dimensional view.

Electron density around 5AD D 302:

$2mF_o - DF_c$ (at 0.7 rmsd) in gray
 $mF_o - DF_c$ (at 3 rmsd) in purple (negative)
and green (positive)

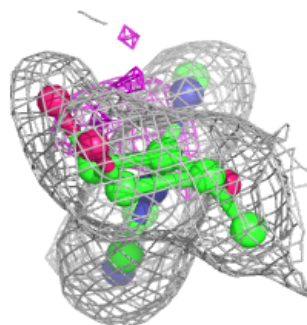
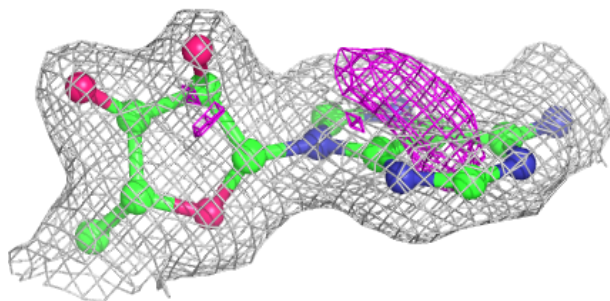
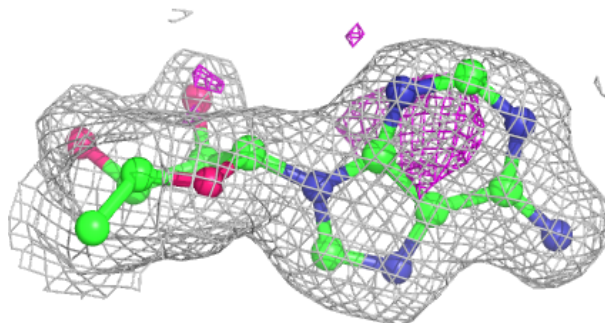
**Electron density around 5AD B 302:**

$2mF_o - DF_c$ (at 0.7 rmsd) in gray
 $mF_o - DF_c$ (at 3 rmsd) in purple (negative)
and green (positive)

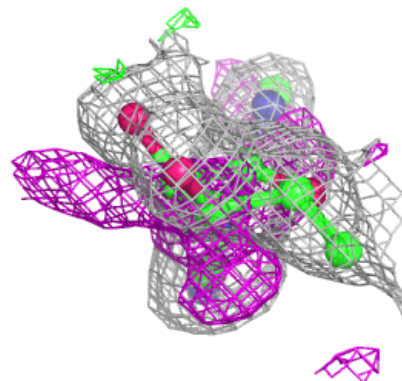
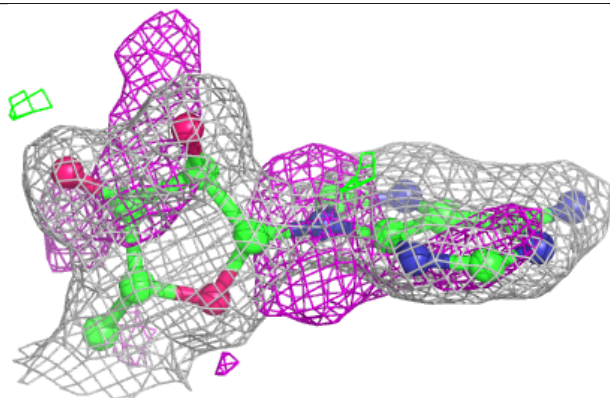
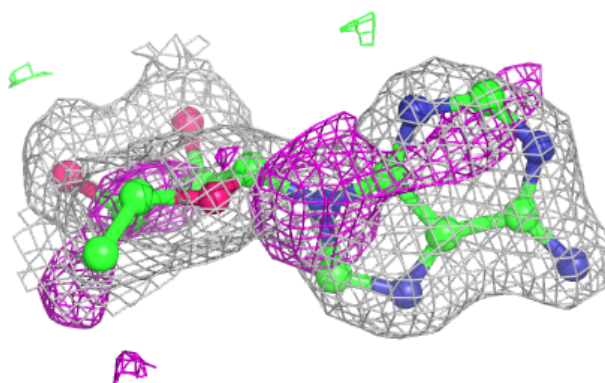


Electron density around 5AD C 302:

$2mF_o-DF_c$ (at 0.7 rmsd) in gray
 mF_o-DF_c (at 3 rmsd) in purple (negative)
and green (positive)

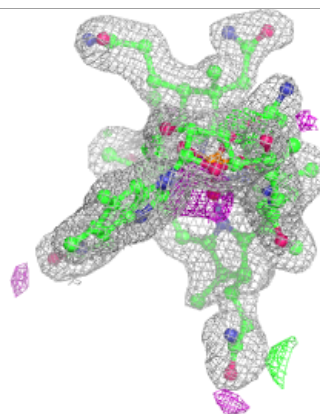
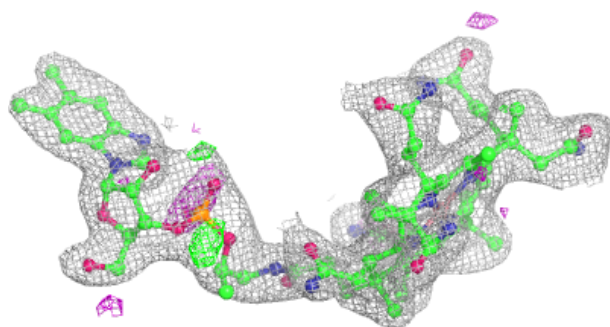
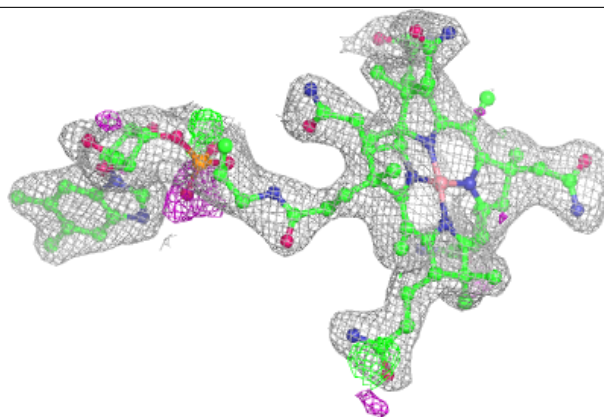
**Electron density around 5AD A 302:**

$2mF_o-DF_c$ (at 0.7 rmsd) in gray
 mF_o-DF_c (at 3 rmsd) in purple (negative)
and green (positive)

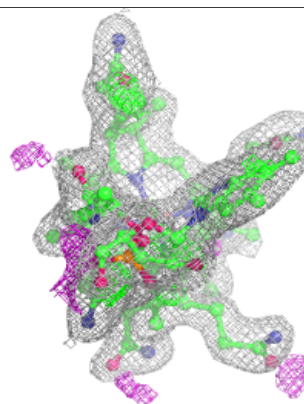
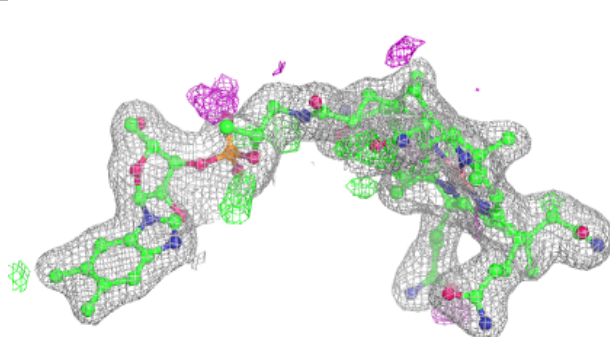
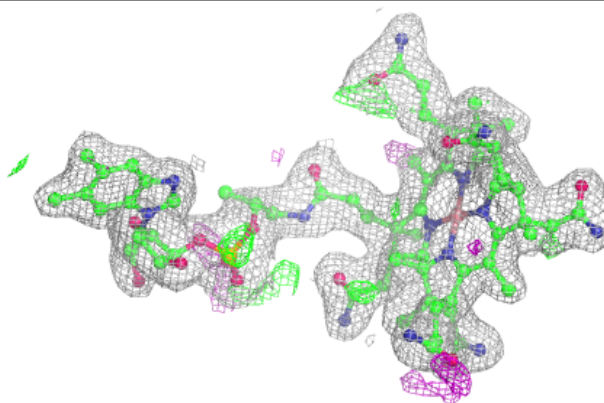


Electron density around B12 D 301:

$2mF_o-DF_c$ (at 0.7 rmsd) in gray
 mF_o-DF_c (at 3 rmsd) in purple (negative)
and green (positive)

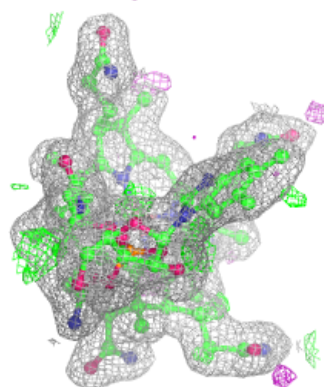
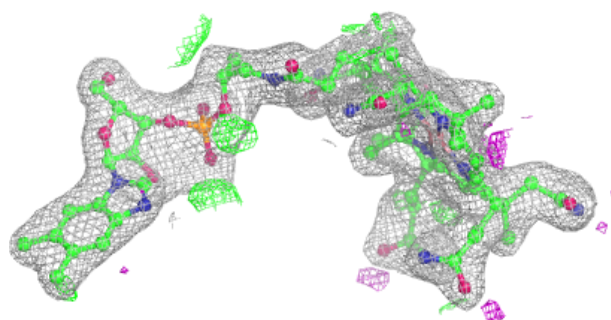
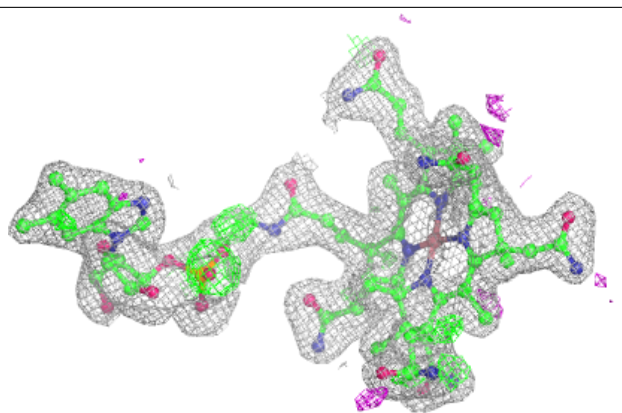
**Electron density around B12 C 301:**

$2mF_o-DF_c$ (at 0.7 rmsd) in gray
 mF_o-DF_c (at 3 rmsd) in purple (negative)
and green (positive)

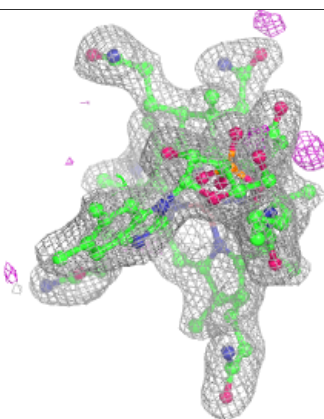
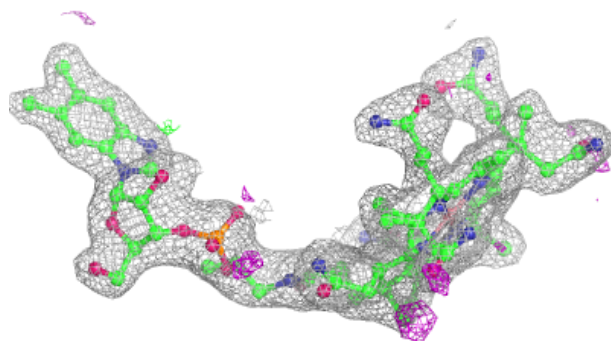
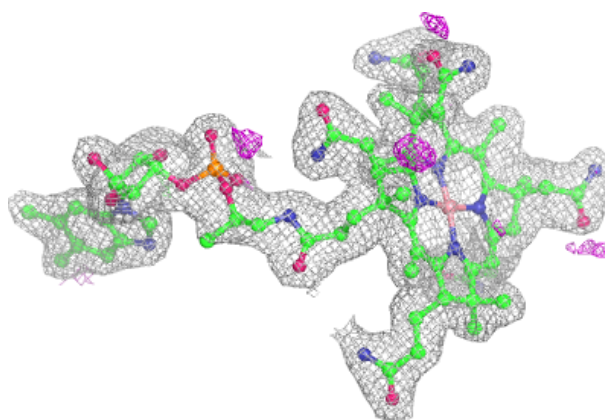


Electron density around B12 A 301:

$2mF_o-DF_c$ (at 0.7 rmsd) in gray
 mF_o-DF_c (at 3 rmsd) in purple (negative)
and green (positive)

**Electron density around B12 B 301:**

$2mF_o-DF_c$ (at 0.7 rmsd) in gray
 mF_o-DF_c (at 3 rmsd) in purple (negative)
and green (positive)



6.5 Other polymers [i](#)

There are no such residues in this entry.