



Full wwPDB X-ray Structure Validation Report ⓘ

Jan 5, 2026 – 04:25 pm GMT

PDB ID : 9S3X / pdb_00009s3x
Title : EGFR (T790M,L858R) in complex with NCL-26007
Authors : Martin, M.P.; Pintar, S.; Noble, M.E.M.
Deposited on : 2025-07-25
Resolution : 2.42 Å(reported)

This is a Full wwPDB X-ray Structure Validation Report for a publicly released PDB entry.

We welcome your comments at validation@mail.wwpdb.org

A user guide is available at

<https://www.wwpdb.org/validation/2017/XrayValidationReportHelp>

with specific help available everywhere you see the ⓘ symbol.

The types of validation reports are described at

<http://www.wwpdb.org/validation/2017/FAQs#types>.

The following versions of software and data (see [references ⓘ](#)) were used in the production of this report:

MolProbity : 4-5-2 with Phenix2.0
Mogul : ?? (??), CSD ??CSD?? (???)
Xtriage (Phenix) : 2.0
EDS : 3.0
Percentile statistics : 20231227.v01 (using entries in the PDB archive December 27th 2023)
CCP4 : 9.0.010 (Gargrove)
Density-Fitness : 1.0.12
Ideal geometry (proteins) : Engh & Huber (2001)
Ideal geometry (DNA, RNA) : Parkinson et al. (1996)
Validation Pipeline (wwPDB-VP) : 2.47

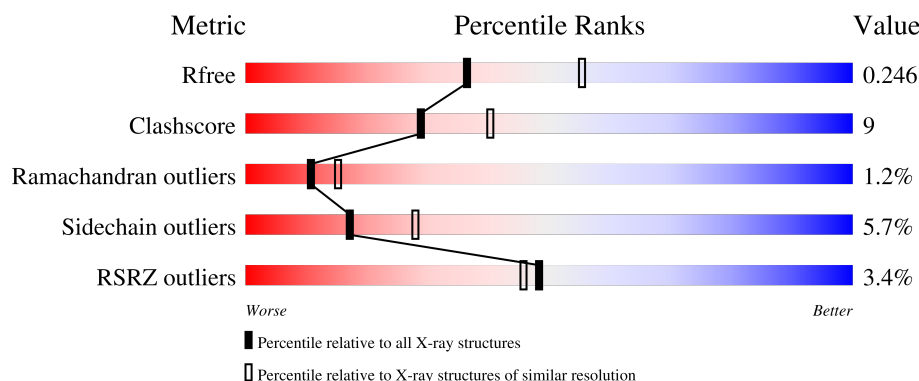
1 Overall quality at a glance

The following experimental techniques were used to determine the structure:

X-RAY DIFFRACTION

The reported resolution of this entry is 2.42 Å.

Percentile scores (ranging between 0-100) for global validation metrics of the entry are shown in the following graphic. The table shows the number of entries on which the scores are based.



Metric	Whole archive (#Entries)	Similar resolution (#Entries, resolution range(Å))
R_{free}	164625	5670 (2.44-2.40)
Clashscore	180529	6299 (2.44-2.40)
Ramachandran outliers	177936	6232 (2.44-2.40)
Sidechain outliers	177891	6233 (2.44-2.40)
RSRZ outliers	164620	5670 (2.44-2.40)

The table below summarises the geometric issues observed across the polymeric chains and their fit to the electron density. The red, orange, yellow and green segments of the lower bar indicate the fraction of residues that contain outliers for ≥ 3 , 2, 1 and 0 types of geometric quality criteria respectively. A grey segment represents the fraction of residues that are not modelled. The numeric value for each fraction is indicated below the corresponding segment, with a dot representing fractions $\leq 5\%$. The upper red bar (where present) indicates the fraction of residues that have poor fit to the electron density. The numeric value is given above the bar.

Mol	Chain	Length	Quality of chain
1	A	324	<div> <div>3%</div> <div>76%</div> <div>21%</div> <div>.</div> </div>

2 Entry composition [i](#)

There are 3 unique types of molecules in this entry. The entry contains 2843 atoms, of which 0 are hydrogens and 0 are deuteriums.

In the tables below, the ZeroOcc column contains the number of atoms modelled with zero occupancy, the AltConf column contains the number of residues with at least one atom in alternate conformation and the Trace column contains the number of residues modelled with at most 2 atoms.

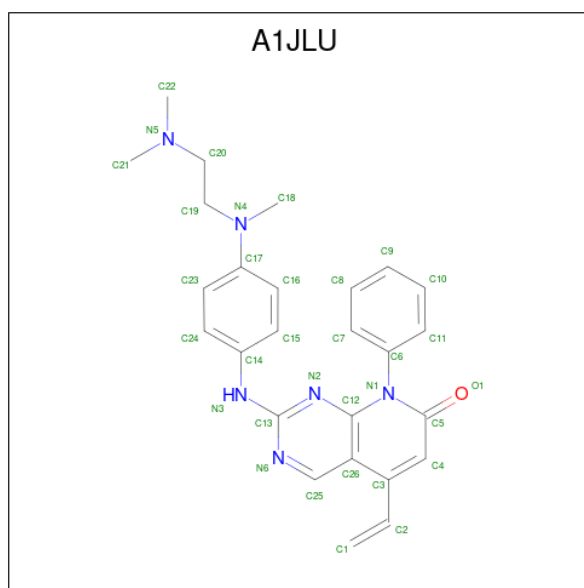
- Molecule 1 is a protein called Epidermal growth factor receptor.

Mol	Chain	Residues	Atoms					ZeroOcc	AltConf	Trace
1	A	324	Total	C	N	O	S	0	2	0
			2599	1664	439	477	19			

There are 6 discrepancies between the modelled and reference sequences:

Chain	Residue	Modelled	Actual	Comment	Reference
A	790	MET	THR	variant	UNP P00533
A	797	SER	CYS	conflict	UNP P00533
A	858	ARG	LEU	variant	UNP P00533
A	865	ALA	GLU	conflict	UNP P00533
A	866	ALA	GLU	conflict	UNP P00533
A	867	ALA	LYS	conflict	UNP P00533

- Molecule 2 is 2-[[4-[2-(dimethylamino)ethyl-methyl-amino]phenyl]amino]-5-ethenyl-8-phenyl-pyrido[2,3-d]pyrimidin-7-one (CCD ID: A1JLU) (formula: C₂₆H₂₈N₆O).



Mol	Chain	Residues	Atoms				ZeroOcc	AltConf
2	A	1	Total	C	N	O	0	0
			33	26	6	1		

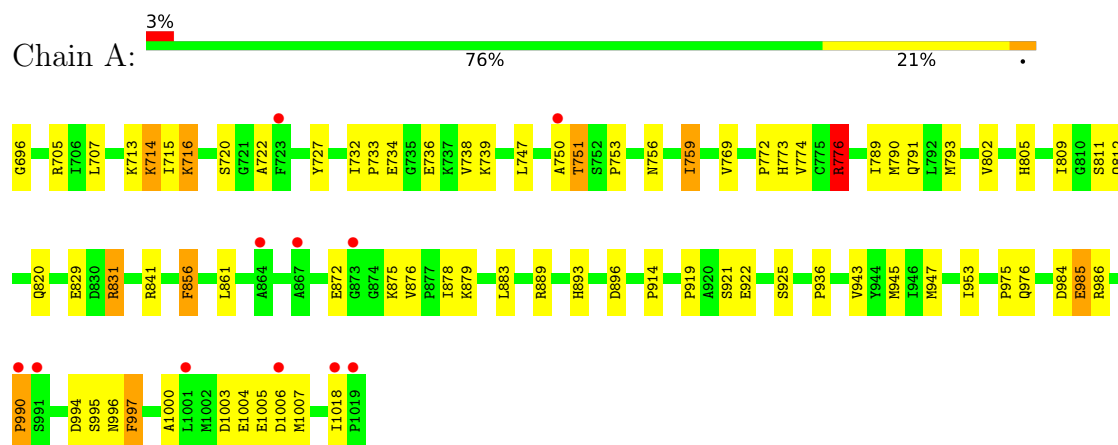
- Molecule 3 is water.

Mol	Chain	Residues	Atoms		ZeroOcc	AltConf
3	A	211	Total	O	0	0
			211	211		

3 Residue-property plots

These plots are drawn for all protein, RNA, DNA and oligosaccharide chains in the entry. The first graphic for a chain summarises the proportions of the various outlier classes displayed in the second graphic. The second graphic shows the sequence view annotated by issues in geometry and electron density. Residues are color-coded according to the number of geometric quality criteria for which they contain at least one outlier: green = 0, yellow = 1, orange = 2 and red = 3 or more. A red dot above a residue indicates a poor fit to the electron density ($RSRZ > 2$). Stretches of 2 or more consecutive residues without any outlier are shown as a green connector. Residues present in the sample, but not in the model, are shown in grey.

- Molecule 1: Epidermal growth factor receptor



4 Data and refinement statistics

Property	Value
Space group	I 2 3
Cell constants a, b, c, α , β , γ	143.18Å 143.18Å 143.18Å 90.00° 90.00° 90.00°
Resolution (Å)	50.62 – 2.42 50.62 – 2.42
% Data completeness (in resolution range)	99.1 (50.62-2.42) 99.1 (50.62-2.42)
R_{merge}	0.17
R_{sym}	(Not available)
$\langle I/\sigma(I) \rangle$ ¹	1.22 (at 2.42Å)
Refinement program	REFMAC 5.8.0430 (refmacat 0.4.82), REFMAC 5.8.0430 (refmacat 0.4.82)
R, R_{free}	0.189 , 0.246 0.189 , 0.246
R_{free} test set	977 reflections (5.07%)
Wilson B-factor (Å ²)	77.1
Anisotropy	0.000
Bulk solvent k_{sol} (e/Å ³), B_{sol} (Å ²)	0.35 , 69.3
L-test for twinning ²	$\langle L \rangle = 0.51$, $\langle L^2 \rangle = 0.35$
Estimated twinning fraction	0.023 for -l,-k,-h
F_o, F_c correlation	0.97
Total number of atoms	2843
Average B, all atoms (Å ²)	84.0

Xtriage's analysis on translational NCS is as follows: *The largest off-origin peak in the Patterson function is 3.47% of the height of the origin peak. No significant pseudotranslation is detected.*

¹Intensities estimated from amplitudes.

²Theoretical values of $\langle |L| \rangle$, $\langle L^2 \rangle$ for acentric reflections are 0.5, 0.333 respectively for untwinned datasets, and 0.375, 0.2 for perfectly twinned datasets.

5 Model quality

5.1 Standard geometry

Bond lengths and bond angles in the following residue types are not validated in this section: A1JLU

The Z score for a bond length (or angle) is the number of standard deviations the observed value is removed from the expected value. A bond length (or angle) with $|Z| > 5$ is considered an outlier worth inspection. RMSZ is the root-mean-square of all Z scores of the bond lengths (or angles).

Mol	Chain	Bond lengths		Bond angles	
		RMSZ	$\# Z > 5$	RMSZ	$\# Z > 5$
1	A	0.54	0/2657	1.26	9/3597 (0.3%)

Chiral center outliers are detected by calculating the chiral volume of a chiral center and verifying if the center is modelled as a planar moiety or with the opposite hand. A planarity outlier is detected by checking planarity of atoms in a peptide group, atoms in a mainchain group or atoms of a sidechain that are expected to be planar.

Mol	Chain	#Chirality outliers	#Planarity outliers
1	A	0	2

There are no bond length outliers.

All (9) bond angle outliers are listed below:

Mol	Chain	Res	Type	Atoms	Z	Observed(°)	Ideal(°)
1	A	805	HIS	CA-CB-CG	6.94	120.74	113.80
1	A	997	PHE	N-CA-C	-6.68	105.75	114.04
1	A	831	ARG	NE-CZ-NH1	-6.33	115.17	121.50
1	A	856	PHE	N-CA-CB	-6.23	101.46	110.56
1	A	705	ARG	CB-CA-C	5.59	119.56	110.22
1	A	856	PHE	CB-CA-C	5.55	119.94	110.56
1	A	936	PRO	CB-CA-C	5.32	117.41	110.92
1	A	896	ASP	CA-CB-CG	5.31	117.91	112.60
1	A	772	PRO	CB-CA-C	5.17	119.20	111.85

There are no chirality outliers.

All (2) planarity outliers are listed below:

Mol	Chain	Res	Type	Group
1	A	776	ARG	Sidechain

Continued on next page...

Continued from previous page...

Mol	Chain	Res	Type	Group
1	A	831	ARG	Sidechain

5.2 Too-close contacts ⓘ

In the following table, the Non-H and H(model) columns list the number of non-hydrogen atoms and hydrogen atoms in the chain respectively. The H(added) column lists the number of hydrogen atoms added and optimized by MolProbity. The Clashes column lists the number of clashes within the asymmetric unit, whereas Symm-Clashes lists symmetry-related clashes.

Mol	Chain	Non-H	H(model)	H(added)	Clashes	Symm-Clashes
1	A	2599	0	2621	43	0
2	A	33	0	0	2	0
3	A	211	0	0	4	2
All	All	2843	0	2621	45	2

The all-atom clashscore is defined as the number of clashes found per 1000 atoms (including hydrogen atoms). The all-atom clashscore for this structure is 9.

All (45) close contacts within the same asymmetric unit are listed below, sorted by their clash magnitude.

Atom-1	Atom-2	Interatomic distance (Å)	Clash overlap (Å)
2:A:1101:A1JLU:N2	2:A:1101:A1JLU:C7	2.44	0.77
1:A:750:ALA:HB1	1:A:756:ASN:HD21	1.50	0.75
1:A:733:PRO:HB2	1:A:736:GLU:HG3	1.71	0.73
1:A:707:LEU:HD12	1:A:789:ILE:HG13	1.74	0.69
1:A:713:LYS:CE	1:A:732:ILE:HD12	2.23	0.69
1:A:696:GLY:N	3:A:1204:HOH:O	2.29	0.65
1:A:985:GLU:HG2	1:A:986:ARG:HD3	1.79	0.65
1:A:713:LYS:HE3	1:A:732:ILE:HD12	1.79	0.64
1:A:739:LYS:NZ	1:A:1006:ASP:HB2	2.15	0.62
1:A:811:SER:OG	1:A:975:PRO:HB2	2.01	0.60
1:A:976:GLN:HE22	1:A:985:GLU:HB3	1.67	0.58
1:A:996:ASN:O	1:A:1000:ALA:HB2	2.06	0.56
1:A:739:LYS:HZ3	1:A:1006:ASP:HB2	1.72	0.55
1:A:791:GLN:HG2	1:A:793:MET:HE3	1.90	0.54
1:A:715:ILE:O	1:A:716:LYS:CB	2.54	0.54
1:A:919:PRO:HG2	1:A:922:GLU:HG3	1.89	0.54
1:A:733:PRO:O	1:A:736:GLU:HB2	2.08	0.53
1:A:751:THR:O	1:A:753:PRO:HD3	2.10	0.52
2:A:1101:A1JLU:C11	2:A:1101:A1JLU:O1	2.57	0.52

Continued on next page...

Continued from previous page...

Atom-1	Atom-2	Interatomic distance (Å)	Clash overlap (Å)
1:A:715:ILE:O	1:A:716:LYS:HB3	2.10	0.51
1:A:793:MET:HA	1:A:793:MET:HE2	1.91	0.51
1:A:994:ASP:HB2	1:A:997:PHE:HB2	1.92	0.50
1:A:715:ILE:O	1:A:715:ILE:HG22	2.13	0.48
1:A:736:GLU:HB3	1:A:738:VAL:HG22	1.96	0.47
1:A:773:HIS:CE1	1:A:820:GLN:HG2	2.48	0.47
1:A:841:ARG:HD3	3:A:1257:HOH:O	2.13	0.47
1:A:713:LYS:HE2	1:A:732:ILE:HD12	1.96	0.47
1:A:883:LEU:HD22	1:A:953:ILE:HD12	1.97	0.45
1:A:879:LYS:HD3	1:A:914:PRO:O	2.17	0.45
1:A:734:GLU:O	3:A:1201:HOH:O	2.21	0.45
1:A:747:LEU:HD21	1:A:759:ILE:HD12	1.99	0.45
1:A:995:SER:C	1:A:997:PHE:H	2.25	0.45
1:A:769:VAL:O	1:A:776:ARG:HD3	2.17	0.44
1:A:943:VAL:HG12	1:A:947:MET:HE3	1.99	0.44
1:A:802:VAL:HG12	1:A:809:ILE:HD13	2.00	0.43
1:A:984:ASP:C	1:A:986:ARG:H	2.27	0.43
1:A:872:GLU:O	1:A:889:ARG:NH2	2.51	0.43
1:A:714:LYS:HG2	1:A:727:TYR:CG	2.54	0.42
1:A:829:GLU:HG3	1:A:893:HIS:CD2	2.55	0.42
1:A:985:GLU:H	1:A:985:GLU:CD	2.27	0.41
1:A:774:VAL:HG13	1:A:856:PHE:HZ	1.85	0.41
1:A:812:GLN:HG2	3:A:1377:HOH:O	2.21	0.41
1:A:1005:GLU:H	1:A:1005:GLU:HG3	1.70	0.40
1:A:876:VAL:HG23	1:A:878:ILE:HG13	2.03	0.40
1:A:739:LYS:HZ2	1:A:1006:ASP:HB2	1.86	0.40

All (2) symmetry-related close contacts are listed below. The label for Atom-2 includes the symmetry operator and encoded unit-cell translations to be applied.

Atom-1	Atom-2	Interatomic distance (Å)	Clash overlap (Å)
3:A:1402:HOH:O	3:A:1402:HOH:O[2_565]	2.06	0.14
3:A:1288:HOH:O	3:A:1331:HOH:O[22_554]	2.17	0.03

5.3 Torsion angles ⓘ

5.3.1 Protein backbone ⓘ

In the following table, the Percentiles column shows the percent Ramachandran outliers of the chain as a percentile score with respect to all X-ray entries followed by that with respect to entries

of similar resolution.

The Analysed column shows the number of residues for which the backbone conformation was analysed, and the total number of residues.

Mol	Chain	Analysed	Favoured	Allowed	Outliers	Percentiles
1	A	324/324 (100%)	303 (94%)	17 (5%)	4 (1%)	11 15

All (4) Ramachandran outliers are listed below:

Mol	Chain	Res	Type
1	A	990	PRO
1	A	716	LYS
1	A	985	GLU
1	A	722	ALA

5.3.2 Protein sidechains ⓘ

In the following table, the Percentiles column shows the percent sidechain outliers of the chain as a percentile score with respect to all X-ray entries followed by that with respect to entries of similar resolution.

The Analysed column shows the number of residues for which the sidechain conformation was analysed, and the total number of residues.

Mol	Chain	Analysed	Rotameric	Outliers	Percentiles
1	A	284/282 (101%)	268 (94%)	16 (6%)	17 28

All (16) residues with a non-rotameric sidechain are listed below:

Mol	Chain	Res	Type
1	A	714	LYS
1	A	720	SER
1	A	751	THR
1	A	759	ILE
1	A	776	ARG
1	A	790	MET
1	A	861	LEU
1	A	875	LYS
1	A	921	SER
1	A	925	SER
1	A	945	MET
1	A	990	PRO
1	A	1003	ASP

Continued on next page...

Continued from previous page...

Mol	Chain	Res	Type
1	A	1004	GLU
1	A	1007	MET
1	A	1018	ILE

Sometimes sidechains can be flipped to improve hydrogen bonding and reduce clashes. All (6) such sidechains are listed below:

Mol	Chain	Res	Type
1	A	756	ASN
1	A	773	HIS
1	A	787	GLN
1	A	812	GLN
1	A	893	HIS
1	A	976	GLN

5.3.3 RNA [i](#)

There are no RNA molecules in this entry.

5.4 Non-standard residues in protein, DNA, RNA chains [i](#)

There are no non-standard protein/DNA/RNA residues in this entry.

5.5 Carbohydrates [i](#)

There are no oligosaccharides in this entry.

5.6 Ligand geometry [i](#)

1 ligand is modelled in this entry.

There are no bond length outliers.

There are no bond angle outliers.

There are no chirality outliers.

There are no torsion outliers.

There are no ring outliers.

No monomer is involved in short contacts.

5.7 Other polymers [i](#)

There are no such residues in this entry.

5.8 Polymer linkage issues [i](#)

There are no chain breaks in this entry.

6 Fit of model and data [i](#)

6.1 Protein, DNA and RNA chains [i](#)

In the following table, the column labelled ‘#RSRZ > 2’ contains the number (and percentage) of RSRZ outliers, followed by percent RSRZ outliers for the chain as percentile scores relative to all X-ray entries and entries of similar resolution. The OWAB column contains the minimum, median, 95th percentile and maximum values of the occupancy-weighted average B-factor per residue. The column labelled ‘Q < 0.9’ lists the number of (and percentage) of residues with an average occupancy less than 0.9.

Mol	Chain	Analysed	<RSRZ>	#RSRZ > 2		OWAB(Å ²)	Q < 0.9
1	A	324/324 (100%)	-0.08	11 (3%)	48 46	26, 70, 176, 230	2 (0%)

All (11) RSRZ outliers are listed below:

Mol	Chain	Res	Type	RSRZ
1	A	723	PHE	4.1
1	A	1019	PRO	3.8
1	A	990	PRO	3.2
1	A	750	ALA	3.0
1	A	1018	ILE	2.6
1	A	1001	LEU	2.6
1	A	864	ALA	2.5
1	A	991	SER	2.3
1	A	1006	ASP	2.1
1	A	873	GLY	2.1
1	A	867	ALA	2.1

6.2 Non-standard residues in protein, DNA, RNA chains [i](#)

There are no non-standard protein/DNA/RNA residues in this entry.

6.3 Carbohydrates [i](#)

There are no oligosaccharides in this entry.

6.4 Ligands [i](#)

In the following table, the Atoms column lists the number of modelled atoms in the group and the number defined in the chemical component dictionary. The B-factors column lists the minimum,

median, 95th percentile and maximum values of B factors of atoms in the group. The column labelled 'Q< 0.9' lists the number of atoms with occupancy less than 0.9.

Mol	Type	Chain	Res	Atoms	RSCC	RSR	B-factors(\AA^2)	Q<0.9
2	A1JLU	A	1101	33/33	0.75	0.26	77,142,179,192	0

6.5 Other polymers [i](#)

There are no such residues in this entry.