



# Full wwPDB X-ray Structure Validation Report ⓘ

Jun 29, 2026 – 01:48 pm BST

PDB ID : 9TF6 / pdb\_00009tf6  
Title : ERAP1 in complex with (3R,4R)-1-[3-cyano-6-(cyclopropylamino)pyridin-2-yl]-4-(propan-2-yl)pyrrolidine-3-carboxylic acid  
Authors : Rowland, P.  
Deposited on : 2025-11-27  
Resolution : 1.73 Å(reported)

This is a Full wwPDB X-ray Structure Validation Report for a publicly released PDB entry.

We welcome your comments at [validation@mail.wwpdb.org](mailto:validation@mail.wwpdb.org)

A user guide is available at

<https://www.wwpdb.org/validation/2017/XrayValidationReportHelp>

with specific help available everywhere you see the ⓘ symbol.

The types of validation reports are described at

<http://www.wwpdb.org/validation/2017/FAQs#types>.

---

The following versions of software and data (see [references ⓘ](#)) were used in the production of this report:

MolProbity : 4-5-2 with Phenix2.0  
Mogul : 1.8.4, CSD as541be (2020)  
Xtrriage (Phenix) : 2.0  
EDS : 3.0  
Buster-report : wwPDB partial adaption of 1.1.7 (2018)  
Percentile statistics : 20250101.v01 (using entries in the PDB archive January 1st 2025)  
CCP4 : 9.0.015 (Gargrove)  
Density-Fitness : 1.0.12  
Ideal geometry (proteins) : Engh & Huber (2001)  
Ideal geometry (DNA, RNA) : Parkinson et al. (1996)  
Validation Pipeline (wwPDB-VP) : 2.50

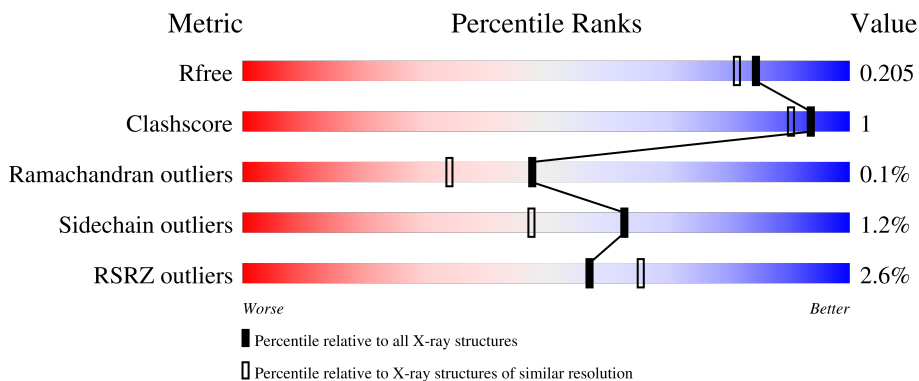
# 1 Overall quality at a glance

The following experimental techniques were used to determine the structure:

*X-RAY DIFFRACTION*

The reported resolution of this entry is 1.73 Å.

Percentile scores (ranging between 0-100) for global validation metrics of the entry are shown in the following graphic. The table shows the number of entries on which the scores are based.



Metric	Whole archive (#Entries)	Similar resolution (#Entries, resolution range(Å))
$R_{free}$	180053	1187 (1.74-1.74)
Clashscore	190562	1207 (1.74-1.74)
Ramachandran outliers	187476	1200 (1.74-1.74)
Sidechain outliers	187428	1200 (1.74-1.74)
RSRZ outliers	180081	1188 (1.74-1.74)

The table below summarises the geometric issues observed across the polymeric chains and their fit to the electron density. The red, orange, yellow and green segments of the lower bar indicate the fraction of residues that contain outliers for  $\geq 3$ , 2, 1 and 0 types of geometric quality criteria respectively. A grey segment represents the fraction of residues that are not modelled. The numeric value for each fraction is indicated below the corresponding segment, with a dot representing fractions  $\leq 5\%$ . The upper red bar (where present) indicates the fraction of residues that have poor fit to the electron density. The numeric value is given above the bar.

Mol	Chain	Length	Quality of chain
1	A	922	

## 2 Entry composition

There are 6 unique types of molecules in this entry. The entry contains 8107 atoms, of which 0 are hydrogens and 0 are deuteriums.

In the tables below, the ZeroOcc column contains the number of atoms modelled with zero occupancy, the AltConf column contains the number of residues with at least one atom in alternate conformation and the Trace column contains the number of residues modelled with at most 2 atoms.

- Molecule 1 is a protein called Endoplasmic reticulum aminopeptidase 1.

Mol	Chain	Residues	Atoms					ZeroOcc	AltConf	Trace
			Total	C	N	O	S			
1	A	856	6975	4497	1153	1292	33	0	12	0

There are 39 discrepancies between the modelled and reference sequences:

Chain	Residue	Modelled	Actual	Comment	Reference
A	70	GLN	ASN	conflict	UNP Q9NZ08
A	154	GLN	ASN	conflict	UNP Q9NZ08
A	414	GLN	ASN	conflict	UNP Q9NZ08
A	511	GLY	CYS	conflict	UNP Q9NZ08
A	?	-	PRO	deletion	UNP Q9NZ08
A	?	-	THR	deletion	UNP Q9NZ08
A	?	-	ASP	deletion	UNP Q9NZ08
A	?	-	GLY	deletion	UNP Q9NZ08
A	?	-	VAL	deletion	UNP Q9NZ08
A	?	-	LYS	deletion	UNP Q9NZ08
A	?	-	GLY	deletion	UNP Q9NZ08
A	?	-	MET	deletion	UNP Q9NZ08
A	?	-	ASP	deletion	UNP Q9NZ08
A	?	-	GLY	deletion	UNP Q9NZ08
A	?	-	PHE	deletion	UNP Q9NZ08
A	?	-	CYS	deletion	UNP Q9NZ08
A	?	-	SER	deletion	UNP Q9NZ08
A	?	-	ARG	deletion	UNP Q9NZ08
A	?	-	SER	deletion	UNP Q9NZ08
A	?	-	GLN	deletion	UNP Q9NZ08
A	?	-	HIS	deletion	UNP Q9NZ08
A	?	-	SER	deletion	UNP Q9NZ08
A	?	-	SER	deletion	UNP Q9NZ08
A	?	-	SER	deletion	UNP Q9NZ08
A	?	-	SER	deletion	UNP Q9NZ08
A	?	-	SER	deletion	UNP Q9NZ08
A	?	-	SER	deletion	UNP Q9NZ08
A	?	-	SER	deletion	UNP Q9NZ08
A	?	-	HIS	deletion	UNP Q9NZ08

*Continued on next page...*

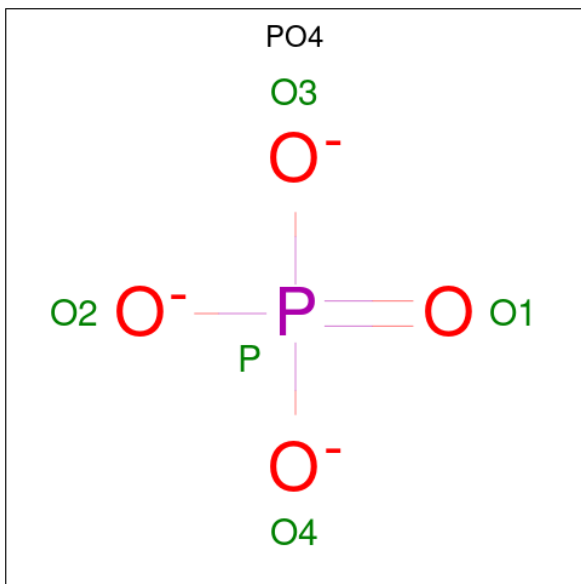
Continued from previous page...

Chain	Residue	Modelled	Actual	Comment	Reference
A	?	-	TRP	deletion	UNP Q9NZ08
A	?	-	HIS	deletion	UNP Q9NZ08
A	512	SER	GLN	conflict	UNP Q9NZ08
A	513	GLY	GLU	conflict	UNP Q9NZ08
A	528	ARG	LYS	variant	UNP Q9NZ08
A	760	GLN	ASN	conflict	UNP Q9NZ08
A	942	GLU	-	expression tag	UNP Q9NZ08
A	943	ASN	-	expression tag	UNP Q9NZ08
A	944	LEU	-	expression tag	UNP Q9NZ08
A	945	TYR	-	expression tag	UNP Q9NZ08
A	946	PHE	-	expression tag	UNP Q9NZ08
A	947	GLN	-	expression tag	UNP Q9NZ08

- Molecule 2 is ZINC ION (CCD ID: ZN) (formula: Zn).

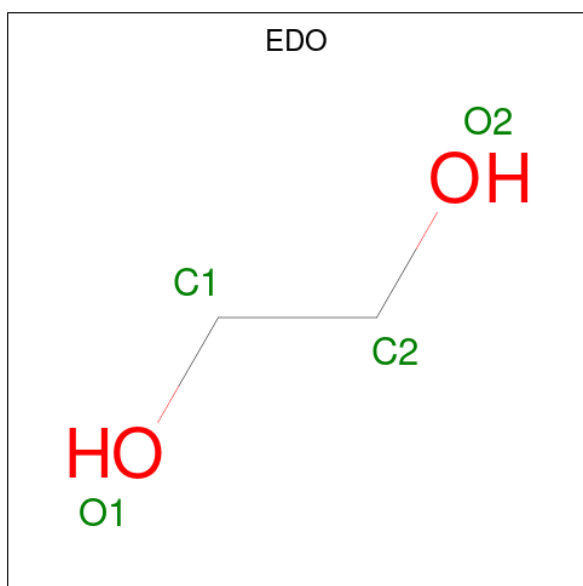
Mol	Chain	Residues	Atoms	ZeroOcc	AltConf
2	A	1	Total Zn 1 1	0	0

- Molecule 3 is PHOSPHATE ION (CCD ID: PO4) (formula: O<sub>4</sub>P).



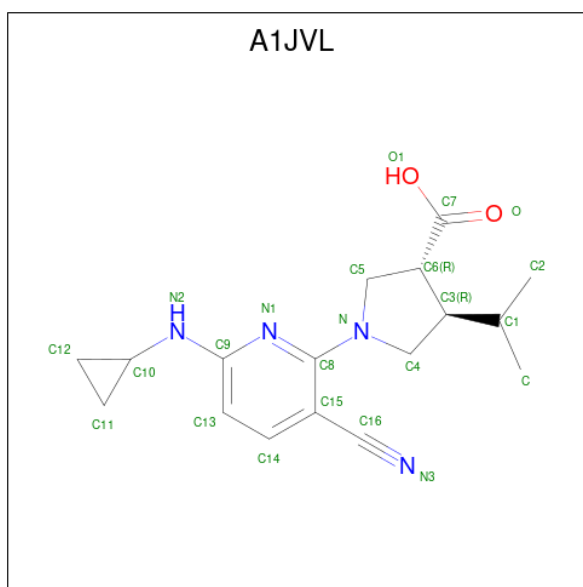
Mol	Chain	Residues	Atoms	ZeroOcc	AltConf
3	A	1	Total O P 5 4 1	0	0
3	A	1	Total O P 5 4 1	0	0

- Molecule 4 is 1,2-ETHANEDIOL (CCD ID: EDO) (formula:  $C_2H_6O_2$ ).



Mol	Chain	Residues	Atoms	ZeroOcc	AltConf
4	A	1	Total C O 4 2 2	0	0
4	A	1	Total C O 4 2 2	0	0
4	A	1	Total C O 4 2 2	0	0
4	A	1	Total C O 4 2 2	0	0
4	A	1	Total C O 4 2 2	0	0
4	A	1	Total C O 4 2 2	0	0

- Molecule 5 is (3 {R},4 {R})-1-[3-cyano-6-(cyclopropylamino)pyridin-2-yl]-4-propan-2-yl-pyrrolidine-3-carboxylic acid (CCD ID: A1JVL) (formula:  $C_{17}H_{22}N_4O_2$ ) (labeled as "Ligand of Interest" by depositor).



Mol	Chain	Residues	Atoms				ZeroOcc	AltConf
			Total	C	N	O		
5	A	1	23	17	4	2	0	0

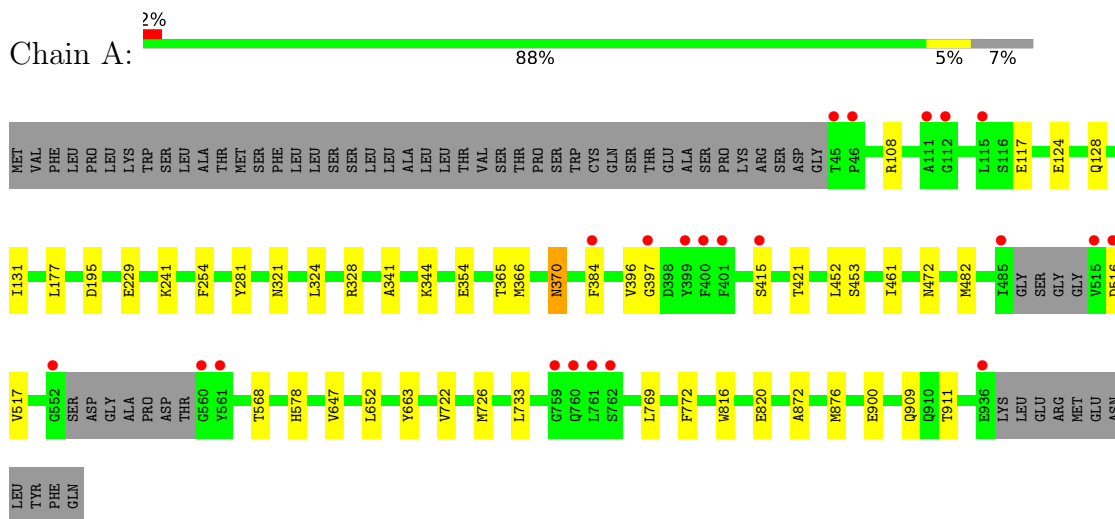
- Molecule 6 is water.

Mol	Chain	Residues	Atoms		ZeroOcc	AltConf
			Total	O		
6	A	1074	1074	1074	0	0

### 3 Residue-property plots [i](#)

These plots are drawn for all protein, RNA, DNA and oligosaccharide chains in the entry. The first graphic for a chain summarises the proportions of the various outlier classes displayed in the second graphic. The second graphic shows the sequence view annotated by issues in geometry and electron density. Residues are color-coded according to the number of geometric quality criteria for which they contain at least one outlier: green = 0, yellow = 1, orange = 2 and red = 3 or more. A red dot above a residue indicates a poor fit to the electron density ( $RSRZ > 2$ ). Stretches of 2 or more consecutive residues without any outlier are shown as a green connector. Residues present in the sample, but not in the model, are shown in grey.

- Molecule 1: Endoplasmic reticulum aminopeptidase 1



## 4 Data and refinement statistics

Property	Value	Source
Space group	P 21 21 2	Depositor
Cell constants a, b, c, $\alpha$ , $\beta$ , $\gamma$	113.13Å 140.65Å 57.52Å 90.00° 90.00° 90.00°	Depositor
Resolution (Å)	31.54 – 1.73 31.54 – 1.73	Depositor EDS
% Data completeness (in resolution range)	91.8 (31.54-1.73) 92.4 (31.54-1.73)	Depositor EDS
$R_{merge}$	(Not available)	Depositor
$R_{sym}$	(Not available)	Depositor
$\langle I/\sigma(I) \rangle$ <sup>1</sup>	1.15 (at 1.73Å)	Xtrriage
Refinement program	BUSTER 2.11.7	Depositor
R, $R_{free}$	0.169 , 0.203 0.173 , 0.205	Depositor DCC
$R_{free}$ test set	4484 reflections (4.61%)	wwPDB-VP
Wilson B-factor (Å <sup>2</sup> )	21.7	Xtrriage
Anisotropy	0.179	Xtrriage
Bulk solvent $k_{sol}$ (e/Å <sup>3</sup> ), $B_{sol}$ (Å <sup>2</sup> )	0.33 , 51.0	EDS
L-test for twinning <sup>2</sup>	$\langle  L  \rangle = 0.48$ , $\langle L^2 \rangle = 0.32$	Xtrriage
Estimated twinning fraction	No twinning to report.	Xtrriage
$F_o, F_c$ correlation	0.96	EDS
Total number of atoms	8107	wwPDB-VP
Average B, all atoms (Å <sup>2</sup> )	26.0	wwPDB-VP

Xtrriage's analysis on translational NCS is as follows: *The largest off-origin peak in the Patterson function is 4.76% of the height of the origin peak. No significant pseudotranslation is detected.*

<sup>1</sup>Intensities estimated from amplitudes.

<sup>2</sup>Theoretical values of  $\langle |L| \rangle$ ,  $\langle L^2 \rangle$  for acentric reflections are 0.5, 0.333 respectively for untwinned datasets, and 0.375, 0.2 for perfectly twinned datasets.

## 5 Model quality [i](#)

### 5.1 Standard geometry [i](#)

Bond lengths and bond angles in the following residue types are not validated in this section: PO4, ZN, A1JVL, EDO

The Z score for a bond length (or angle) is the number of standard deviations the observed value is removed from the expected value. A bond length (or angle) with  $|Z| > 5$  is considered an outlier worth inspection. RMSZ is the root-mean-square of all Z scores of the bond lengths (or angles).

Mol	Chain	Bond lengths		Bond angles	
		RMSZ	# Z  >5	RMSZ	# Z  >5
1	A	0.83	0/7183	1.11	11/9733 (0.1%)

There are no bond length outliers.

All (11) bond angle outliers are listed below:

Mol	Chain	Res	Type	Atoms	Z	Observed(°)	Ideal(°)
1	A	516	ASP	CA-C-N	6.15	130.29	121.55
1	A	516	ASP	C-N-CA	6.15	130.29	121.55
1	A	254	PHE	CA-CB-CG	5.87	119.67	113.80
1	A	328	ARG	N-CA-C	-5.61	102.59	110.50
1	A	517	VAL	N-CA-CB	-5.36	102.71	111.98
1	A	772	PHE	CA-CB-CG	5.34	119.14	113.80
1	A	396	VAL	CA-C-N	5.21	125.86	120.03
1	A	396	VAL	C-N-CA	5.21	125.86	120.03
1	A	452	LEU	CA-C-N	5.16	131.40	121.54
1	A	452	LEU	C-N-CA	5.16	131.40	121.54
1	A	195	ASP	CA-CB-CG	5.15	117.75	112.60

There are no chirality outliers.

There are no planarity outliers.

### 5.2 Too-close contacts [i](#)

In the following table, the Non-H and H(model) columns list the number of non-hydrogen atoms and hydrogen atoms in the chain respectively. The H(added) column lists the number of hydrogen atoms added and optimized by MolProbity. The Clashes column lists the number of clashes within the asymmetric unit, whereas Symm-Clashes lists symmetry-related clashes.

Mol	Chain	Non-H	H(model)	H(added)	Clashes	Symm-Clashes
1	A	6975	0	6942	19	0
2	A	1	0	0	0	0
3	A	10	0	0	1	0
4	A	24	0	36	1	0
5	A	23	0	0	1	0
6	A	1074	0	0	0	0
All	All	8107	0	6978	20	0

The all-atom clashscore is defined as the number of clashes found per 1000 atoms (including hydrogen atoms). The all-atom clashscore for this structure is 1.

All (20) close contacts within the same asymmetric unit are listed below, sorted by their clash magnitude.

Atom-1	Atom-2	Interatomic distance (Å)	Clash overlap (Å)
1:A:384[B]:PHE:HE1	1:A:397:GLY:HA2	1.58	0.69
1:A:384[B]:PHE:CE1	1:A:397:GLY:HA2	2.31	0.65
1:A:124:GLU:HG2	1:A:131:ILE:HG22	1.78	0.64
1:A:415:SER:HB3	1:A:909:GLN:HG3	1.93	0.51
1:A:461:ILE:HG23	1:A:482:MET:HE1	1.93	0.50
1:A:722:VAL:HG12	1:A:726:MET:HE2	1.93	0.50
1:A:108:ARG:HG2	1:A:117:GLU:HG2	1.92	0.50
1:A:733:LEU:HD22	1:A:769:LEU:HD13	1.93	0.50
1:A:281:TYR:CE1	1:A:344:LYS:HE2	2.47	0.49
5:A:1010:A1JVL:C16	5:A:1010:A1JVL:C5	2.92	0.47
1:A:872:ALA:O	1:A:876:MET:HG2	2.18	0.44
1:A:365:THR:O	1:A:472:ASN:HA	2.19	0.43
1:A:341:ALA:HB1	1:A:722:VAL:HG13	2.00	0.43
1:A:321:ASN:HB2	1:A:324:LEU:O	2.18	0.42
1:A:647:VAL:HA	1:A:652:LEU:O	2.20	0.42
1:A:816:TRP:CE2	1:A:820:GLU:HG3	2.54	0.42
1:A:421:THR:HG23	4:A:1009:EDO:H21	2.02	0.42
1:A:370:ASN:H	1:A:370:ASN:HD22	1.67	0.41
1:A:568:THR:HA	1:A:578:HIS:O	2.21	0.41
1:A:354:GLU:OE2	3:A:1002:PO4:O2	2.40	0.40

There are no symmetry-related clashes.

## 5.3 Torsion angles [i](#)

### 5.3.1 Protein backbone [i](#)

In the following table, the Percentiles column shows the percent Ramachandran outliers of the chain as a percentile score with respect to all X-ray entries followed by that with respect to entries of similar resolution.

The Analysed column shows the number of residues for which the backbone conformation was analysed, and the total number of residues.

Mol	Chain	Analysed	Favoured	Allowed	Outliers	Percentiles
1	A	862/922 (94%)	836 (97%)	25 (3%)	1 (0%)	48 34

All (1) Ramachandran outliers are listed below:

Mol	Chain	Res	Type
1	A	453	SER

### 5.3.2 Protein sidechains [i](#)

In the following table, the Percentiles column shows the percent sidechain outliers of the chain as a percentile score with respect to all X-ray entries followed by that with respect to entries of similar resolution.

The Analysed column shows the number of residues for which the sidechain conformation was analysed, and the total number of residues.

Mol	Chain	Analysed	Rotameric	Outliers	Percentiles
1	A	776/821 (94%)	767 (99%)	9 (1%)	63 47

All (9) residues with a non-rotameric sidechain are listed below:

Mol	Chain	Res	Type
1	A	128	GLN
1	A	177	LEU
1	A	229	GLU
1	A	241	LYS
1	A	366	MET
1	A	370	ASN
1	A	663	TYR
1	A	900	GLU
1	A	911	THR

Sometimes sidechains can be flipped to improve hydrogen bonding and reduce clashes. All (7) such sidechains are listed below:

Mol	Chain	Res	Type
1	A	213	HIS
1	A	375	ASN
1	A	645	GLN
1	A	714	GLN
1	A	741	GLN
1	A	790	GLN
1	A	809	GLN

### 5.3.3 RNA [i](#)

There are no RNA molecules in this entry.

## 5.4 Non-standard residues in protein, DNA, RNA chains [i](#)

There are no non-standard protein/DNA/RNA residues in this entry.

## 5.5 Carbohydrates [i](#)

There are no oligosaccharides in this entry.

## 5.6 Ligand geometry [i](#)

Of 10 ligands modelled in this entry, 1 is monoatomic - leaving 9 for Mogul analysis.

In the following table, the Counts columns list the number of bonds (or angles) for which Mogul statistics could be retrieved, the number of bonds (or angles) that are observed in the model and the number of bonds (or angles) that are defined in the Chemical Component Dictionary. The Link column lists molecule types, if any, to which the group is linked. The Z score for a bond length (or angle) is the number of standard deviations the observed value is removed from the expected value. A bond length (or angle) with  $|Z| > 2$  is considered an outlier worth inspection. RMSZ is the root-mean-square of all Z scores of the bond lengths (or angles).

Mol	Type	Chain	Res	Link	Bond lengths			Bond angles		
					Counts	RMSZ	$\# Z  > 2$	Counts	RMSZ	$\# Z  > 2$
4	EDO	A	1005	-	3,3,3	0.50	0	2,2,2	0.46	0
4	EDO	A	1007	-	3,3,3	0.38	0	2,2,2	0.58	0
3	PO4	A	1003	-	4,4,4	2.05	3 (75%)	6,6,6	0.60	0
4	EDO	A	1008	-	3,3,3	0.54	0	2,2,2	0.34	0
3	PO4	A	1002	2	4,4,4	1.66	0	6,6,6	0.52	0

Mol	Type	Chain	Res	Link	Bond lengths			Bond angles		
					Counts	RMSZ	# Z  > 2	Counts	RMSZ	# Z  > 2
4	EDO	A	1006	-	3,3,3	0.56	0	2,2,2	0.42	0
4	EDO	A	1004	-	3,3,3	0.61	0	2,2,2	0.56	0
5	A1JVL	A	1010	-	24,25,25	0.94	2 (8%)	27,36,36	1.10	2 (7%)
4	EDO	A	1009	-	3,3,3	0.52	0	2,2,2	0.24	0

In the following table, the Chirals column lists the number of chiral outliers, the number of chiral centers analysed, the number of these observed in the model and the number defined in the Chemical Component Dictionary. Similar counts are reported in the Torsion and Rings columns. '-' means no outliers of that kind were identified.

Mol	Type	Chain	Res	Link	Chirals	Torsions	Rings
4	EDO	A	1005	-	-	0/1/1/1	-
4	EDO	A	1007	-	-	0/1/1/1	-
4	EDO	A	1008	-	-	0/1/1/1	-
4	EDO	A	1006	-	-	0/1/1/1	-
4	EDO	A	1004	-	-	0/1/1/1	-
5	A1JVL	A	1010	-	-	1/17/32/32	0/3/3/3
4	EDO	A	1009	-	-	0/1/1/1	-

All (5) bond length outliers are listed below:

Mol	Chain	Res	Type	Atoms	Z	Observed(Å)	Ideal(Å)
5	A	1010	A1JVL	O-C7	3.36	1.32	1.22
5	A	1010	A1JVL	O1-C7	-2.36	1.22	1.30
3	A	1003	PO4	P-O1	2.19	1.56	1.50
3	A	1003	PO4	P-O3	2.04	1.60	1.54
3	A	1003	PO4	P-O2	2.00	1.60	1.54

All (2) bond angle outliers are listed below:

Mol	Chain	Res	Type	Atoms	Z	Observed(°)	Ideal(°)
5	A	1010	A1JVL	O-C7-C6	-3.93	113.10	122.95
5	A	1010	A1JVL	O1-C7-C6	3.15	122.71	114.03

There are no chirality outliers.

All (1) torsion outliers are listed below:

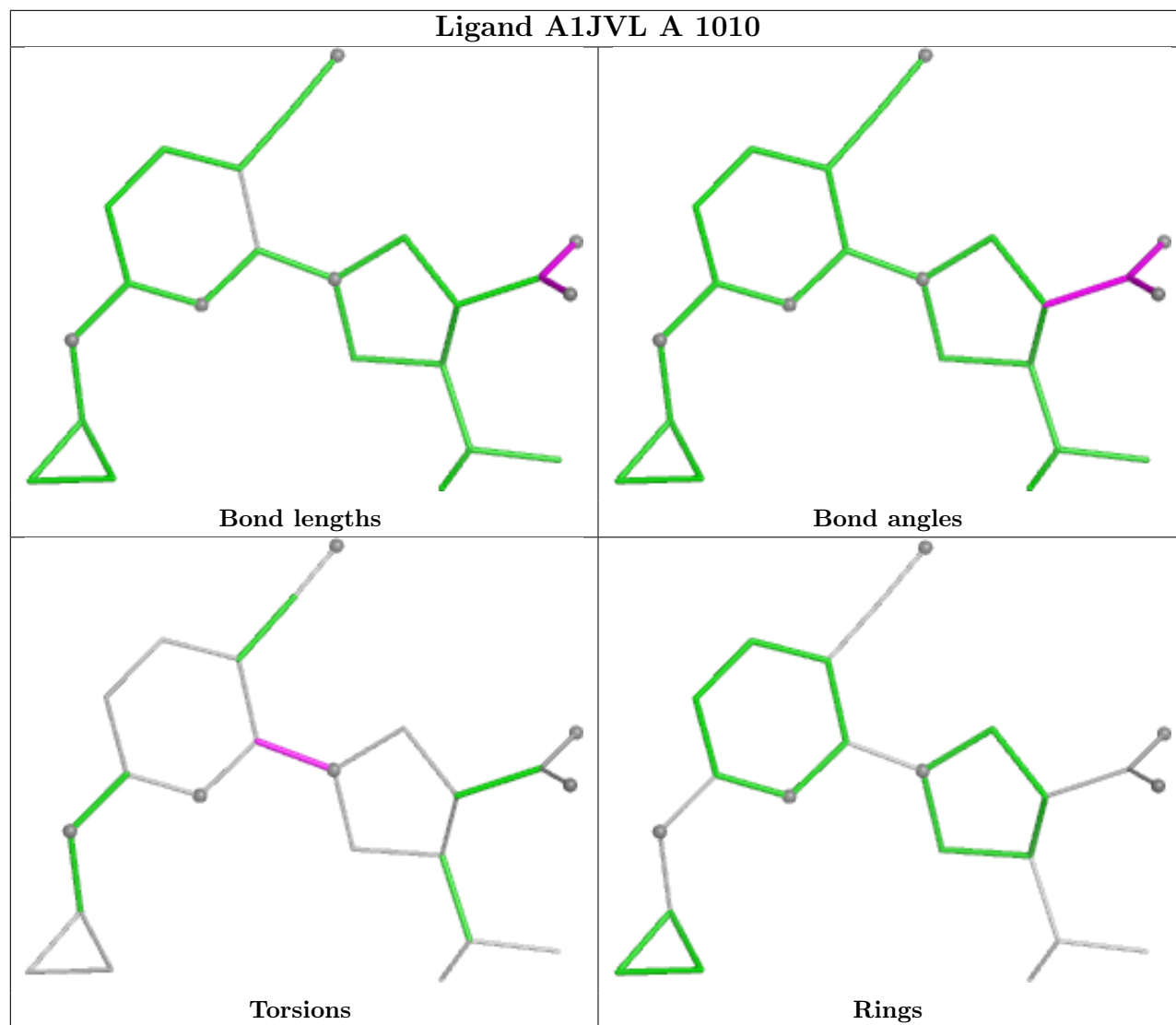
Mol	Chain	Res	Type	Atoms
5	A	1010	A1JVL	N1-C8-N-C4

There are no ring outliers.

3 monomers are involved in 3 short contacts:

Mol	Chain	Res	Type	Clashes	Symm-Clashes
3	A	1002	PO4	1	0
5	A	1010	A1JVL	1	0
4	A	1009	EDO	1	0

The following is a two-dimensional graphical depiction of Mogul quality analysis of bond lengths, bond angles, torsion angles, and ring geometry for all instances of the Ligand of Interest. In addition, ligands with molecular weight > 250 and outliers as shown on the validation Tables will also be included. For torsion angles, if less than 5% of the Mogul distribution of torsion angles is within 10 degrees of the torsion angle in question, then that torsion angle is considered an outlier. Any bond that is central to one or more torsion angles identified as an outlier by Mogul will be highlighted in the graph. For rings, the root-mean-square deviation (RMSD) between the ring in question and similar rings identified by Mogul is calculated over all ring torsion angles. If the average RMSD is greater than 60 degrees and the minimal RMSD between the ring in question and any Mogul-identified rings is also greater than 60 degrees, then that ring is considered an outlier. The outliers are highlighted in purple. The color gray indicates Mogul did not find sufficient equivalents in the CSD to analyse the geometry.



## 5.7 Other polymers [\(i\)](#)

There are no such residues in this entry.

## 5.8 Polymer linkage issues [\(i\)](#)

There are no chain breaks in this entry.

## 6 Fit of model and data [i](#)

### 6.1 Protein, DNA and RNA chains [i](#)

In the following table, the column labelled ‘#RSRZ> 2’ contains the number (and percentage) of RSRZ outliers, followed by percent RSRZ outliers for the chain as percentile scores relative to all X-ray entries and entries of similar resolution. The OWAB column contains the minimum, median, 95<sup>th</sup> percentile and maximum values of the occupancy-weighted average B-factor per residue. The column labelled ‘Q< 0.9’ lists the number of (and percentage) of residues with an average occupancy less than 0.9.

Mol	Chain	Analysed	<RSRZ>	#RSRZ>2	OWAB(Å <sup>2</sup> )	Q<0.9
1	A	856/922 (92%)	-0.19	22 (2%) 57 65	12, 21, 43, 82	12 (1%)

All (22) RSRZ outliers are listed below:

Mol	Chain	Res	Type	RSRZ
1	A	115	LEU	4.6
1	A	485	ILE	4.3
1	A	552	GLY	3.8
1	A	401	PHE	3.7
1	A	761	LEU	3.4
1	A	111	ALA	3.3
1	A	45	THR	3.0
1	A	936	GLU	2.9
1	A	759	GLY	2.9
1	A	560	GLY	2.9
1	A	561	TYR	2.9
1	A	760	GLN	2.8
1	A	112	GLY	2.6
1	A	762	SER	2.6
1	A	400	PHE	2.4
1	A	399	TYR	2.4
1	A	46	PRO	2.4
1	A	415	SER	2.2
1	A	397	GLY	2.2
1	A	516	ASP	2.1
1	A	515	VAL	2.1
1	A	384[A]	PHE	2.0

### 6.2 Non-standard residues in protein, DNA, RNA chains [i](#)

There are no non-standard protein/DNA/RNA residues in this entry.

### 6.3 Carbohydrates [i](#)

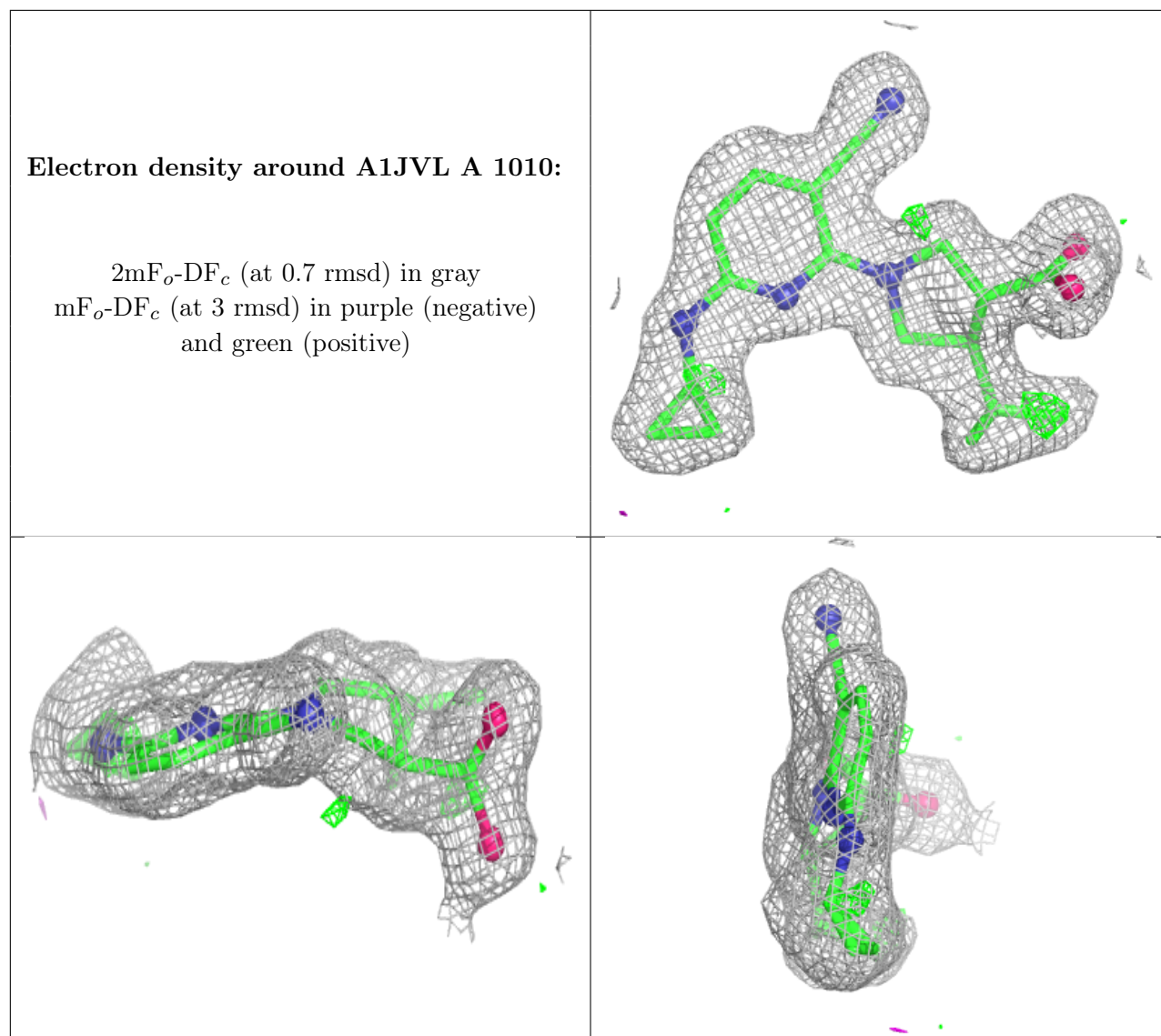
There are no oligosaccharides in this entry.

### 6.4 Ligands [i](#)

In the following table, the Atoms column lists the number of modelled atoms in the group and the number defined in the chemical component dictionary. The B-factors column lists the minimum, median, 95<sup>th</sup> percentile and maximum values of B factors of atoms in the group. The column labelled 'Q< 0.9' lists the number of atoms with occupancy less than 0.9.

Mol	Type	Chain	Res	Atoms	RSCC	RSR	B-factors( $\text{\AA}^2$ )	Q<0.9
4	EDO	A	1009	4/4	0.82	0.15	49,50,51,52	0
3	PO4	A	1003	5/5	0.85	0.12	40,46,47,49	0
3	PO4	A	1002	5/5	0.90	0.12	37,38,40,41	0
4	EDO	A	1006	4/4	0.93	0.09	34,34,38,38	0
4	EDO	A	1005	4/4	0.93	0.09	28,30,31,31	0
4	EDO	A	1008	4/4	0.94	0.09	29,32,37,40	0
4	EDO	A	1004	4/4	0.94	0.07	21,24,28,32	0
5	A1JVL	A	1010	23/23	0.94	0.08	16,19,27,28	0
4	EDO	A	1007	4/4	0.95	0.08	24,25,26,27	0
2	ZN	A	1001	1/1	0.99	0.02	17,17,17,17	0

The following is a graphical depiction of the model fit to experimental electron density of all instances of the Ligand of Interest. In addition, ligands with molecular weight > 250 and outliers as shown on the geometry validation Tables will also be included. Each fit is shown from different orientation to approximate a three-dimensional view.



## 6.5 Other polymers [\(i\)](#)

There are no such residues in this entry.