



## Full wwPDB EM Validation Report ⓘ

Apr 9, 2026 – 06:17 PM EDT

PDB ID : 9ZBJ / pdb\_00009zbj  
EMDB ID : EMD-73991  
Title : Cryo-EM structure of human apo mTORC2  
Authors : Wranik, M.; Lee, J.M.; Rogala, K.B.  
Deposited on : 2025-11-20  
Resolution : 3.20 Å (reported)

This is a Full wwPDB EM Validation Report for a publicly released PDB entry.

We welcome your comments at [validation@mail.wwpdb.org](mailto:validation@mail.wwpdb.org)

A user guide is available at

<https://www.wwpdb.org/validation/2017/EMValidationReportHelp>

with specific help available everywhere you see the ⓘ symbol.

The types of validation reports are described at

<http://www.wwpdb.org/validation/2017/FAQs#types>.

---

The following versions of software and data (see [references ⓘ](#)) were used in the production of this report:

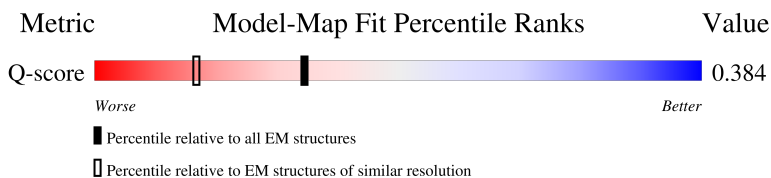
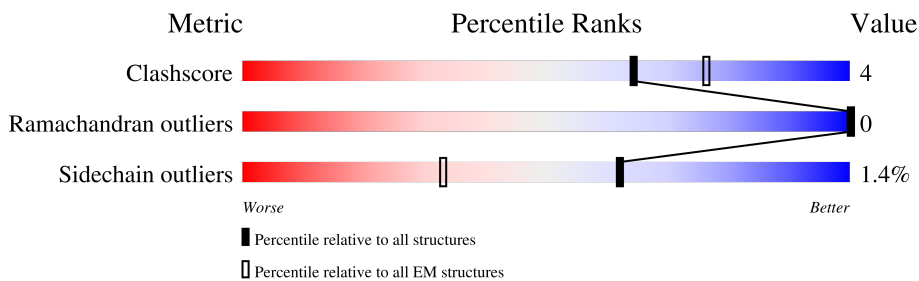
EMDB validation analysis : 0.0.1.dev132  
MolProbity : 4-5-2 with Phenix2.0  
Percentile statistics : 20231227.v01 (using entries in the PDB archive December 27th 2023)  
EM percentile statistics : 202505.v01 (Using data in the EMDB archive up until May 2025)  
MapQ : 1.9.13  
Ideal geometry (proteins) : Engh & Huber (2001)  
Ideal geometry (DNA, RNA) : Parkinson et al. (1996)  
Validation Pipeline (wwPDB-VP) : 2.48.1

# 1 Overall quality at a glance

The following experimental techniques were used to determine the structure:  
*ELECTRON MICROSCOPY*

The reported resolution of this entry is 3.20 Å.

Percentile scores (ranging between 0-100) for global validation metrics of the entry are shown in the following graphic. The table shows the number of entries on which the scores are based.



Metric	Whole archive (#Entries)	EM structures (#Entries)	Similar EM resolution (#Entries, resolution range(Å))
Clashscore	210492	15764	-
Ramachandran outliers	207382	16835	-
Sidechain outliers	206894	16415	-
Q-score	-	25397	15020 ( 2.70 - 3.70 )

The table below summarises the geometric issues observed across the polymeric chains and their fit to the map. The red, orange, yellow and green segments of the bar indicate the fraction of residues that contain outliers for  $\geq 3$ , 2, 1 and 0 types of geometric quality criteria respectively. A grey segment represents the fraction of residues that are not modelled. The numeric value for each fraction is indicated below the corresponding segment, with a dot representing fractions  $\leq 5\%$ . The upper red bar (where present) indicates the fraction of residues that have poor fit to the EM map (all-atom inclusion  $< 40\%$ ). The numeric value is given above the bar.

Mol	Chain	Length	Quality of chain
1	A	2347	78% (green), 10% (yellow), 12% (grey)
2	B	317	85% (green), 14% (yellow), 1% (orange), 0% (red), 0% (grey)
3	C	1672	62% (green), 6% (yellow), 31% (grey)
4	D	148	74% (green), 6% (yellow), 1% (orange), 1% (red), 18% (grey)

## 2 Entry composition [i](#)

There are 5 unique types of molecules in this entry. The entry contains 28107 atoms, of which 0 are hydrogens and 0 are deuteriums.

In the tables below, the AltConf column contains the number of residues with at least one atom in alternate conformation and the Trace column contains the number of residues modelled with at most 2 atoms.

- Molecule 1 is a protein called Serine/threonine-protein kinase mTOR.

Mol	Chain	Residues	Atoms					AltConf	Trace
			Total	C	N	O	S		
1	A	2068	15644	9928	2767	2854	95	0	0

- Molecule 2 is a protein called Target of rapamycin complex subunit LST8.

Mol	Chain	Residues	Atoms					AltConf	Trace
			Total	C	N	O	S		
2	B	317	2450	1522	433	477	18	0	0

- Molecule 3 is a protein called Rapamycin-insensitive companion of mTOR.

Mol	Chain	Residues	Atoms					AltConf	Trace
			Total	C	N	O	S		
3	C	1149	9136	5808	1621	1660	47	0	0

- Molecule 4 is a protein called Target of rapamycin complex 2 subunit MAPKAP1.

Mol	Chain	Residues	Atoms					AltConf	Trace
			Total	C	N	O	S		
4	D	120	876	538	169	165	4	0	0

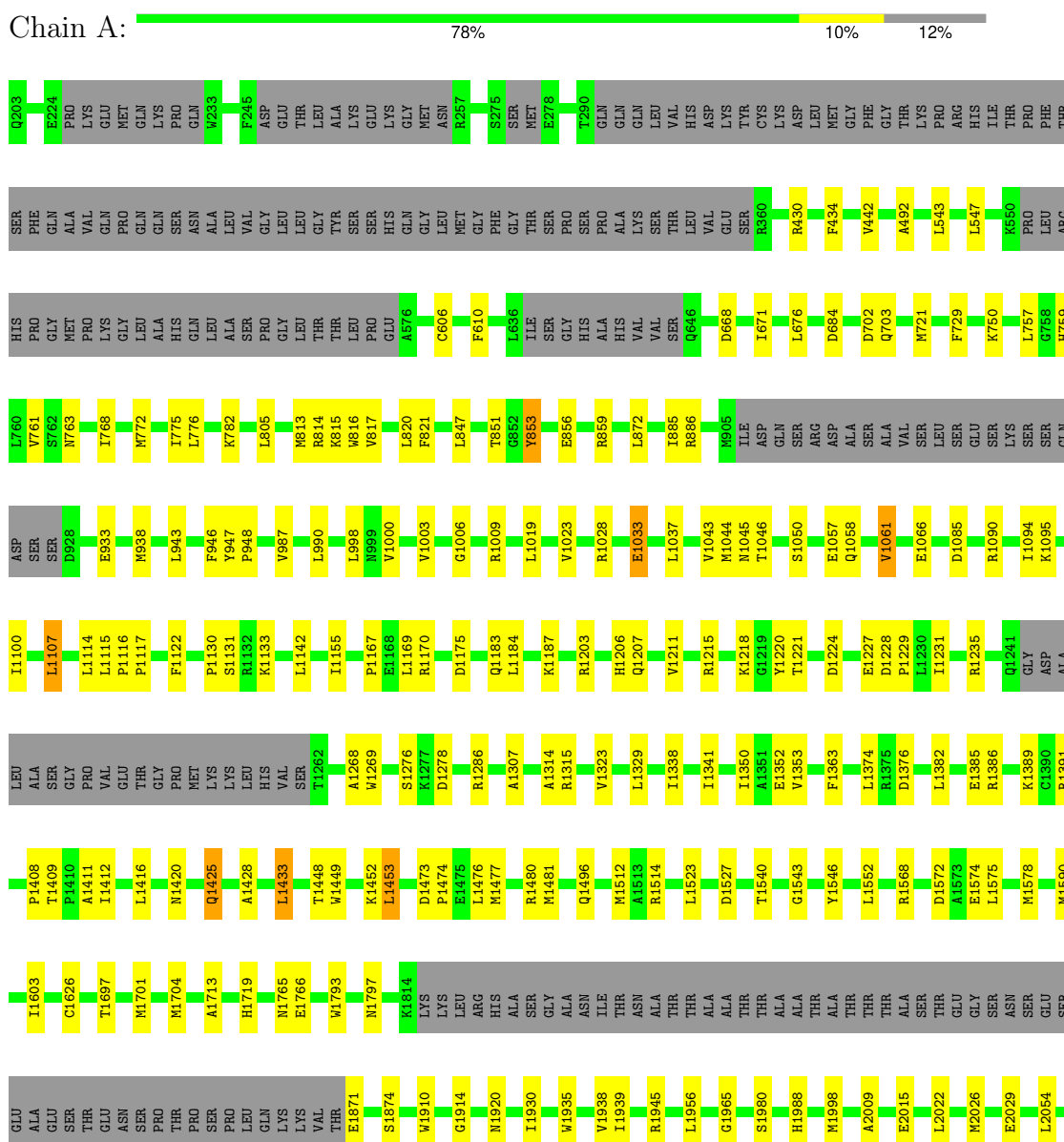
- Molecule 5 is ZINC ION (CCD ID: ZN) (formula: Zn) (labeled as "Ligand of Interest" by depositor).

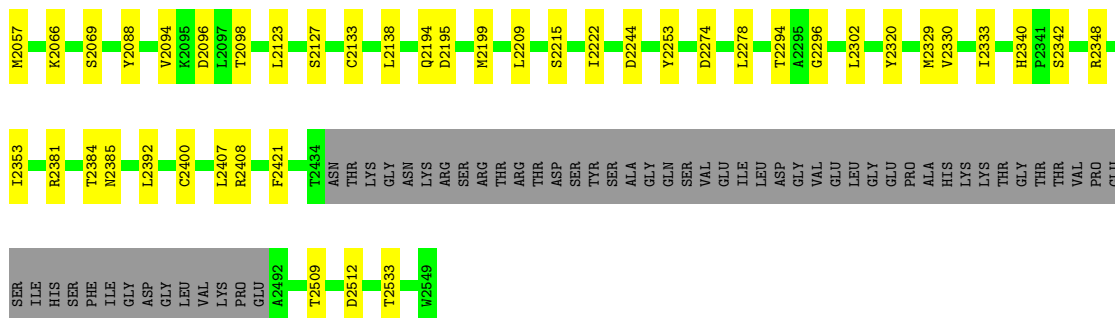
Mol	Chain	Residues	Atoms		AltConf
			Total	Zn	
5	C	1	1	1	0

### 3 Residue-property plots

These plots are drawn for all protein, RNA, DNA and oligosaccharide chains in the entry. The first graphic for a chain summarises the proportions of the various outlier classes displayed in the second graphic. The second graphic shows the sequence view annotated by issues in geometry and atom inclusion in map density. Residues are color-coded according to the number of geometric quality criteria for which they contain at least one outlier: green = 0, yellow = 1, orange = 2 and red = 3 or more. A red diamond above a residue indicates a poor fit to the EM map for this residue (all-atom inclusion < 40%). Stretches of 2 or more consecutive residues without any outlier are shown as a green connector. Residues present in the sample, but not in the model, are shown in grey.

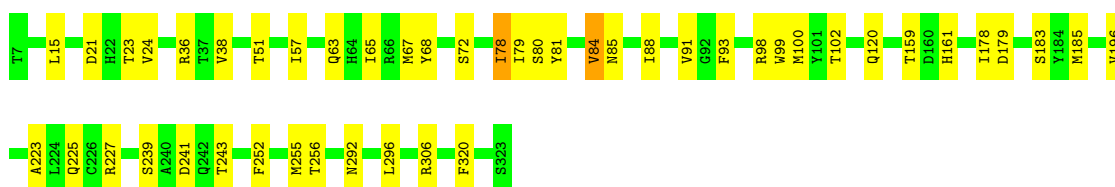
- Molecule 1: Serine/threonine-protein kinase mTOR





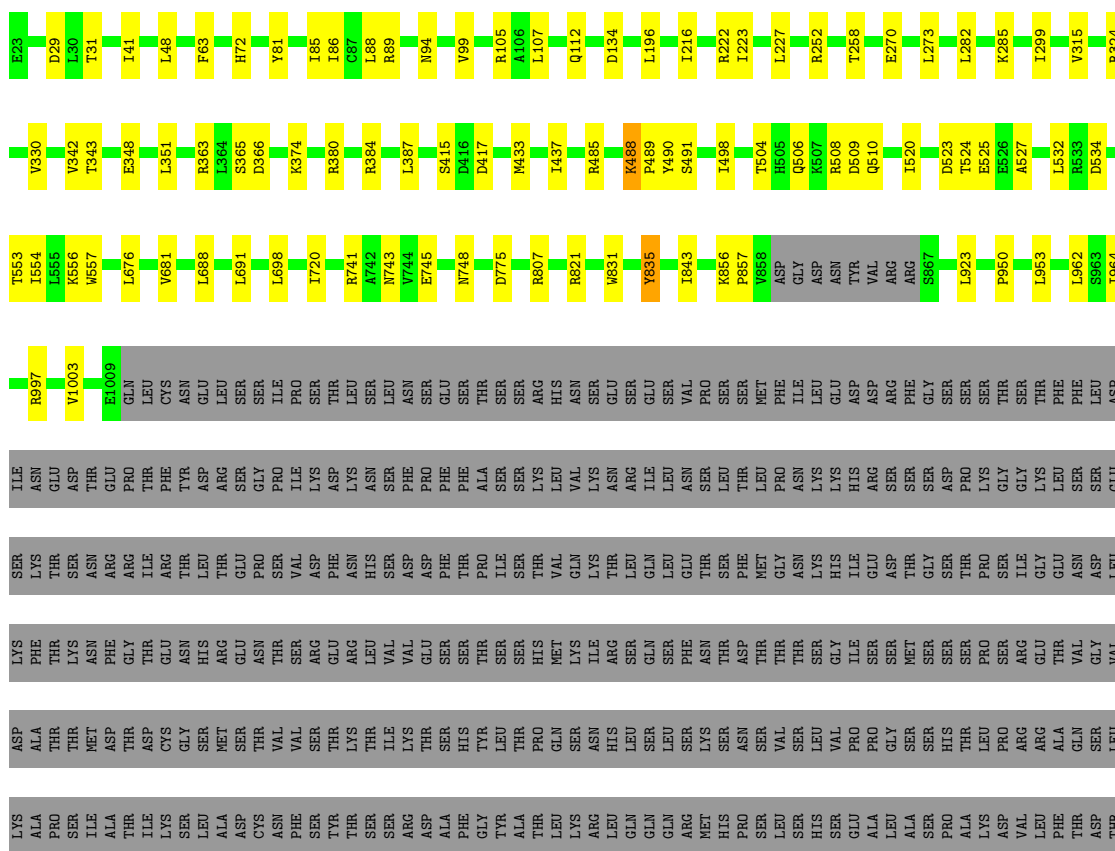
• Molecule 2: Target of rapamycin complex subunit LST8

Chain B: 85% 14%



• Molecule 3: Rapamycin-insensitive companion of mTOR

Chain C: 62% 6% 31%





## 4 Experimental information

Property	Value	Source
EM reconstruction method	SINGLE PARTICLE	Depositor
Imposed symmetry	POINT, Not provided	
Number of particles used	1049398	Depositor
Resolution determination method	FSC 0.143 CUT-OFF	Depositor
CTF correction method	PHASE FLIPPING AND AMPLITUDE CORRECTION	Depositor
Microscope	TFS KRIOS	Depositor
Voltage (kV)	300	Depositor
Electron dose ( $e^-/\text{\AA}^2$ )	62.20	Depositor
Minimum defocus (nm)	800	Depositor
Maximum defocus (nm)	2000	Depositor
Magnification	Not provided	
Image detector	GATAN K3 BIOQUANTUM (6k x 4k)	Depositor
Maximum map value	0.774	Depositor
Minimum map value	-0.227	Depositor
Average map value	0.005	Depositor
Map value standard deviation	0.036	Depositor
Recommended contour level	0.01	Depositor
Map size ( $\text{\AA}$ )	334.21323, 334.21323, 334.21323	wwPDB
Map dimensions	306, 306, 306	wwPDB
Map angles ( $^\circ$ )	90.0, 90.0, 90.0	wwPDB
Pixel spacing ( $\text{\AA}$ )	1.0922, 1.0922, 1.0922	Depositor

## 5 Model quality [i](#)

### 5.1 Standard geometry [i](#)

Bond lengths and bond angles in the following residue types are not validated in this section:  
ZN

The Z score for a bond length (or angle) is the number of standard deviations the observed value is removed from the expected value. A bond length (or angle) with  $|Z| > 5$  is considered an outlier worth inspection. RMSZ is the root-mean-square of all Z scores of the bond lengths (or angles).

Mol	Chain	Bond lengths		Bond angles	
		RMSZ	# Z  >5	RMSZ	# Z  >5
1	A	0.10	0/15944	0.25	0/21666
2	B	0.08	0/2508	0.29	0/3419
3	C	0.10	0/9301	0.22	0/12595
4	D	0.08	0/885	0.22	0/1196
All	All	0.10	0/28638	0.24	0/38876

There are no bond length outliers.

There are no bond angle outliers.

There are no chirality outliers.

There are no planarity outliers.

### 5.2 Too-close contacts [i](#)

In the following table, the Non-H and H(model) columns list the number of non-hydrogen atoms and hydrogen atoms in the chain respectively. The H(added) column lists the number of hydrogen atoms added and optimized by MolProbity. The Clashes column lists the number of clashes within the asymmetric unit, whereas Symm-Clashes lists symmetry-related clashes.

Mol	Chain	Non-H	H(model)	H(added)	Clashes	Symm-Clashes
1	A	15644	0	14858	132	0
2	B	2450	0	2328	25	0
3	C	9136	0	9208	59	0
4	D	876	0	797	10	0
5	C	1	0	0	0	0
All	All	28107	0	27191	213	0

The all-atom clashscore is defined as the number of clashes found per 1000 atoms (including hydrogen atoms). The all-atom clashscore for this structure is 4.

All (213) close contacts within the same asymmetric unit are listed below, sorted by their clash magnitude.

Atom-1	Atom-2	Interatomic distance (Å)	Clash overlap (Å)
1:A:1540:THR:HG23	1:A:1543:GLY:H	1.52	0.74
1:A:1085:ASP:HB3	1:A:1090:ARG:HH22	1.55	0.72
1:A:757:LEU:HD21	1:A:775:ILE:HG23	1.76	0.68
1:A:761:VAL:HA	1:A:768:ILE:HG13	1.75	0.67
1:A:761:VAL:HG23	1:A:768:ILE:HG21	1.77	0.66
1:A:1227:GLU:OE2	1:A:1235:ARG:NH2	2.29	0.65
3:C:1534:SER:HA	3:C:1684:GLN:HE22	1.61	0.64
1:A:1207:GLN:NE2	3:C:534:ASP:OD2	2.31	0.63
1:A:1416:LEU:O	1:A:1420:ASN:ND2	2.31	0.63
3:C:1642:LYS:HG2	4:D:97:ARG:HH22	1.64	0.63
1:A:2253:TYR:HB2	1:A:2302:LEU:HD12	1.81	0.63
2:B:178:ILE:HG12	2:B:185:MET:HG3	1.80	0.63
1:A:1107:LEU:HD11	1:A:1114:LEU:HD12	1.81	0.62
1:A:1481:MET:HE1	1:A:1512:MET:HB2	1.81	0.62
2:B:78:ILE:HG22	2:B:79:ILE:HG13	1.81	0.62
1:A:1044:MET:HE3	1:A:1045:ASN:H	1.64	0.61
2:B:84:VAL:HG21	2:B:88:ILE:HD11	1.82	0.61
1:A:1315:ARG:NH1	1:A:1352:GLU:OE2	2.31	0.61
1:A:1028:ARG:NE	1:A:1066:GLU:OE1	2.34	0.60
1:A:2009:ALA:HA	1:A:2138:LEU:HD11	1.83	0.60
1:A:1793:TRP:O	1:A:1797:ASN:ND2	2.32	0.59
1:A:1914:GLY:O	1:A:1920:ASN:ND2	2.34	0.59
1:A:668:ASP:HB2	1:A:671:ILE:HG22	1.83	0.59
3:C:856:LYS:HD3	3:C:857:PRO:HD2	1.85	0.59
2:B:80:SER:H	4:D:104:LYS:HB3	1.67	0.58
2:B:91:VAL:HG23	2:B:102:THR:HG22	1.85	0.58
1:A:2222:ILE:HD11	1:A:2330:VAL:HG21	1.84	0.58
1:A:856:GLU:OE1	1:A:859:ARG:NH2	2.37	0.58
3:C:270:GLU:HA	3:C:273:LEU:HD23	1.84	0.58
1:A:1211:VAL:HG22	3:C:553:THR:HG21	1.85	0.57
1:A:1218:LYS:NZ	3:C:556:LYS:O	2.33	0.57
1:A:684:ASP:HB3	1:A:721:MET:HE1	1.86	0.57
1:A:1006:GLY:HA2	1:A:1009:ARG:HB3	1.87	0.57
3:C:324:ARG:NH1	3:C:415:SER:OG	2.37	0.57
1:A:1276:SER:OG	1:A:1278:ASP:OD1	2.23	0.57
1:A:886:ARG:HD3	1:A:1568:ARG:HH12	1.70	0.57
1:A:2015:GLU:OE1	1:A:2127:SER:OG	2.22	0.56
1:A:1409:THR:HG22	1:A:1411:ALA:H	1.70	0.56
3:C:1537:LEU:O	3:C:1609:ARG:NH1	2.38	0.55
3:C:504:THR:OG1	3:C:508:ARG:NH2	2.39	0.55

*Continued on next page...*

*Continued from previous page...*

Atom-1	Atom-2	Interatomic distance (Å)	Clash overlap (Å)
1:A:2209:LEU:O	1:A:2215:SER:OG	2.20	0.55
3:C:489:PRO:HG3	3:C:498:ILE:HD12	1.89	0.55
3:C:775:ASP:OD1	3:C:807:ARG:NH2	2.40	0.55
1:A:814:ARG:HG2	1:A:851:THR:HG23	1.87	0.55
1:A:1000:VAL:HA	1:A:1003:VAL:HG22	1.88	0.55
1:A:2274:ASP:N	1:A:2274:ASP:OD1	2.38	0.54
1:A:1425:GLN:HB3	1:A:1428:ALA:HB3	1.89	0.54
3:C:508:ARG:HH22	3:C:745:GLU:HB3	1.72	0.54
4:D:91:GLU:O	4:D:94:ARG:HB3	2.08	0.54
3:C:299:ILE:HD12	3:C:962:LEU:HB3	1.90	0.54
2:B:65:ILE:HB	2:B:81:TYR:HB2	1.91	0.53
1:A:2296:GLY:O	1:A:2385:ASN:ND2	2.40	0.53
3:C:1522:TYR:HE1	3:C:1688:GLU:HG3	1.74	0.53
3:C:363:ARG:NH1	3:C:365:SER:OG	2.41	0.53
1:A:1409:THR:O	1:A:1412:ILE:HG12	2.10	0.52
1:A:1100:ILE:HG22	1:A:1142:LEU:HD11	1.90	0.52
3:C:41:ILE:HG21	3:C:63:PHE:HB2	1.91	0.52
1:A:1175:ASP:OD1	1:A:1206:HIS:NE2	2.41	0.52
1:A:1697:THR:HG22	1:A:1701:MET:HE2	1.92	0.51
1:A:987:VAL:HA	1:A:990:LEU:HD23	1.91	0.51
1:A:1231:ILE:HG23	3:C:351:LEU:HD11	1.93	0.51
2:B:179:ASP:OD2	2:B:183:SER:OG	2.27	0.51
1:A:1765:ASN:OD1	1:A:1766:GLU:N	2.44	0.51
3:C:216:ILE:HD12	3:C:252:ARG:HH11	1.76	0.51
1:A:1323:VAL:HG21	1:A:1363:PHE:HE2	1.77	0.50
3:C:134:ASP:OD2	3:C:1670:ARG:NH1	2.44	0.50
1:A:2512:ASP:OD1	1:A:2512:ASP:N	2.44	0.50
1:A:702:ASP:OD1	1:A:703:GLN:N	2.45	0.50
1:A:1228:ASP:OD1	3:C:485:ARG:NH2	2.41	0.50
1:A:2054:LEU:O	1:A:2057:MET:HG2	2.12	0.50
3:C:86:ILE:HG22	3:C:89:ARG:HH12	1.77	0.50
1:A:2340:HIS:CE1	1:A:2342:SER:HB2	2.47	0.49
1:A:998:LEU:HD13	1:A:1033:GLU:HB2	1.94	0.49
1:A:1043:VAL:O	1:A:1046:THR:OG1	2.28	0.49
2:B:15:LEU:HD13	2:B:320:PHE:HD2	1.78	0.49
2:B:98:ARG:HG3	2:B:99:TRP:CD1	2.47	0.49
1:A:1514:ARG:HG3	1:A:1546:TYR:HE2	1.78	0.49
3:C:523:ASP:HA	3:C:557:TRP:HE1	1.76	0.49
1:A:1221:THR:HG23	1:A:1224:ASP:H	1.78	0.48
1:A:2026:MET:HA	1:A:2029:GLU:HG2	1.94	0.48
2:B:120:GLN:HB3	4:D:123:LEU:HD13	1.96	0.48

*Continued on next page...*

*Continued from previous page...*

Atom-1	Atom-2	Interatomic distance (Å)	Clash overlap (Å)
1:A:933:GLU:HG3	1:A:938:MET:HG2	1.95	0.48
1:A:1965:GLY:HA3	1:A:1998:MET:HE2	1.95	0.48
3:C:698:LEU:HB3	3:C:720:ILE:HD11	1.95	0.48
1:A:1169:LEU:O	1:A:1170:ARG:C	2.56	0.48
3:C:282:LEU:O	3:C:285:LYS:HB3	2.14	0.48
1:A:1350:ILE:HG23	1:A:1353:VAL:HB	1.96	0.47
1:A:2194:GLN:HG3	1:A:2421:PHE:HZ	1.79	0.47
2:B:36:ARG:NH1	2:B:72:SER:O	2.48	0.47
3:C:688:LEU:HD12	3:C:691:LEU:HD21	1.97	0.47
1:A:1183:GLN:HG2	1:A:1229:PRO:HB3	1.96	0.47
1:A:1980:SER:O	1:A:1988:HIS:ND1	2.44	0.47
1:A:2384:THR:HG22	1:A:2392:LEU:HD21	1.97	0.47
3:C:105:ARG:NH1	4:D:69:SER:O	2.47	0.47
1:A:1167:PRO:HA	1:A:1170:ARG:HG3	1.97	0.47
3:C:223:ILE:O	3:C:227:LEU:HG	2.15	0.47
4:D:92:ARG:HA	4:D:95:LYS:HZ3	1.79	0.47
1:A:1307:ALA:HB1	1:A:1314:ALA:HB2	1.97	0.47
1:A:2195:ASP:O	1:A:2199:MET:HG2	2.15	0.47
1:A:2320:TYR:HD1	1:A:2353:ILE:HD11	1.80	0.47
2:B:296:LEU:HB3	2:B:306:ARG:HB2	1.96	0.46
1:A:1704:MET:HE3	1:A:1713:ALA:HA	1.96	0.46
3:C:1516:THR:OG1	3:C:1518:ASP:OD1	2.33	0.46
1:A:1480:ARG:NH1	1:A:1496:GLN:OE1	2.47	0.46
1:A:2408:ARG:NH2	1:A:2509:THR:O	2.48	0.46
1:A:1058:GLN:O	1:A:1061:VAL:HG22	2.15	0.46
1:A:1094:ILE:HD11	1:A:1131:SER:HA	1.98	0.46
1:A:1215:ARG:HG3	1:A:1220:TYR:HB2	1.97	0.45
1:A:1019:LEU:O	1:A:1023:VAL:HG12	2.16	0.45
1:A:816:TRP:O	1:A:817:VAL:C	2.59	0.45
1:A:820:LEU:HD13	1:A:847:LEU:HD21	1.99	0.45
1:A:1433:LEU:HD12	1:A:1453:LEU:HD12	1.97	0.45
1:A:1574:GLU:HG2	1:A:1578:MET:HG3	1.97	0.45
2:B:196:VAL:HG11	2:B:252:PHE:CZ	2.52	0.45
1:A:772:MET:SD	1:A:805:LEU:HD22	2.56	0.45
1:A:1382:LEU:O	1:A:1386:ARG:HG2	2.17	0.45
1:A:1409:THR:HB	1:A:1412:ILE:HG23	1.98	0.45
1:A:2329:MET:HE3	1:A:2400:CYS:HB3	1.98	0.45
1:A:430:ARG:O	1:A:434:PHE:N	2.49	0.45
1:A:2098:THR:HG23	3:C:1625:SER:HB2	1.98	0.45
2:B:225:GLN:HE21	2:B:227:ARG:HD3	1.81	0.45
3:C:222:ARG:HB3	4:D:17:SER:HB2	1.99	0.45

*Continued on next page...*

*Continued from previous page...*

Atom-1	Atom-2	Interatomic distance (Å)	Clash overlap (Å)
3:C:258:THR:HA	3:C:315:VAL:HG21	1.98	0.45
1:A:943:LEU:HB3	1:A:947:TYR:CZ	2.51	0.45
1:A:442:VAL:HA	1:A:492:ALA:HB2	1.99	0.45
4:D:141:ILE:HD13	4:D:141:ILE:H	1.82	0.44
1:A:943:LEU:HA	1:A:946:PHE:HB3	1.99	0.44
1:A:1130:PRO:HA	1:A:1133:LYS:HG2	1.99	0.44
1:A:1935:TRP:HA	1:A:1938:VAL:HG22	1.99	0.44
1:A:2320:TYR:CD1	1:A:2353:ILE:HD11	2.53	0.44
3:C:1520:CYS:HB3	3:C:1523:CYS:HB2	1.99	0.44
3:C:532:LEU:HD12	3:C:554:ILE:HD13	1.99	0.44
3:C:387:LEU:HD11	3:C:843:ILE:HD11	2.00	0.44
1:A:1114:LEU:C	1:A:1117:PRO:HD2	2.43	0.44
1:A:1385:GLU:OE1	1:A:1389:LYS:NZ	2.51	0.44
1:A:1408:PRO:HA	1:A:1412:ILE:HD11	2.00	0.43
3:C:343:THR:HG21	3:C:348:GLU:HB3	2.00	0.43
3:C:48:LEU:HD21	3:C:1681:GLN:HE21	1.83	0.43
1:A:1473:ASP:HB3	1:A:1476:LEU:HD23	2.01	0.43
2:B:79:ILE:HG23	4:D:104:LYS:HG2	2.01	0.43
1:A:813:MET:HE2	1:A:813:MET:HB3	1.76	0.43
3:C:366:ASP:OD1	3:C:366:ASP:N	2.51	0.43
2:B:21:ASP:OD2	2:B:23:THR:OG1	2.37	0.43
3:C:488:LYS:HA	3:C:488:LYS:HD3	1.80	0.43
1:A:1268:ALA:HA	1:A:1286:ARG:HH12	1.83	0.43
3:C:506:GLN:O	3:C:510:GLN:HB2	2.19	0.43
1:A:872:LEU:HD23	1:A:1575:LEU:HD22	2.01	0.43
3:C:831:TRP:HA	3:C:835:TYR:HB2	2.00	0.43
1:A:1474:PRO:HA	1:A:1477:MET:HG2	1.99	0.43
1:A:2088:TYR:HB2	1:A:2096:ASP:HB2	2.01	0.43
3:C:72:HIS:CD2	3:C:112:GLN:HG3	2.54	0.43
3:C:94:ASN:HD22	3:C:99:VAL:HG21	1.84	0.42
3:C:89:ARG:HD2	3:C:1521:LEU:HD22	2.00	0.42
1:A:853:TYR:CE1	1:A:856:GLU:HG2	2.54	0.42
1:A:1552:LEU:HD13	1:A:1603:ILE:HG12	2.01	0.42
1:A:1116:PRO:HG2	1:A:1117:PRO:HD3	2.01	0.42
1:A:1338:ILE:HG23	1:A:1374:LEU:HD23	2.01	0.42
1:A:2069:SER:HB3	3:C:258:THR:HG22	2.02	0.42
1:A:2294:THR:HB	1:A:2381:ARG:HH22	1.84	0.42
3:C:81:TYR:O	3:C:85:ILE:HG12	2.19	0.42
1:A:815:LYS:HB2	1:A:816:TRP:CE3	2.54	0.42
1:A:1115:LEU:HD11	1:A:1155:ILE:HD11	2.01	0.42
3:C:923:LEU:HD23	3:C:964:ILE:HD13	2.00	0.42

*Continued on next page...*

*Continued from previous page...*

Atom-1	Atom-2	Interatomic distance (Å)	Clash overlap (Å)
1:A:1871:GLU:O	1:A:1874:SER:OG	2.25	0.42
2:B:223:ALA:HA	2:B:239:SER:HA	2.02	0.42
1:A:1935:TRP:O	1:A:1939:ILE:HG13	2.19	0.42
2:B:24:VAL:HB	2:B:38:VAL:HG22	2.01	0.42
3:C:1522:TYR:CE1	3:C:1688:GLU:HG3	2.53	0.42
1:A:1184:LEU:O	1:A:1187:LYS:HB2	2.19	0.42
3:C:374:LYS:HG2	3:C:741:ARG:HH12	1.84	0.42
3:C:821:ARG:HA	3:C:821:ARG:NH1	2.35	0.42
1:A:1945:ARG:HD3	1:A:1945:ARG:HA	1.91	0.42
1:A:1057:GLU:O	1:A:1061:VAL:HG13	2.20	0.42
1:A:1930:ILE:HD11	1:A:1935:TRP:CZ2	2.55	0.42
1:A:853:TYR:HD1	1:A:853:TYR:HA	1.73	0.41
1:A:2274:ASP:O	1:A:2278:LEU:HG	2.20	0.41
1:A:750:LYS:HB3	1:A:782:LYS:HE2	2.03	0.41
2:B:63:GLN:NE2	2:B:85:ASN:O	2.53	0.41
3:C:285:LYS:HG3	3:C:330:VAL:HG22	2.02	0.41
3:C:524:THR:HG22	3:C:527:ALA:H	1.85	0.41
1:A:1050:SER:HB3	1:A:1095:LYS:NZ	2.35	0.41
1:A:1203:ARG:NH1	1:A:1203:ARG:HA	2.35	0.41
1:A:676:LEU:HD12	1:A:676:LEU:HA	1.87	0.41
1:A:1910:TRP:HZ2	1:A:1956:LEU:HB3	1.86	0.41
3:C:676:LEU:HD22	3:C:681:VAL:HG11	2.03	0.41
2:B:93:PHE:HE1	2:B:100:MET:HE2	1.85	0.41
1:A:1033:GLU:O	1:A:1037:LEU:HG	2.21	0.41
3:C:384:ARG:O	3:C:997:ARG:NH2	2.52	0.41
1:A:776:LEU:HD21	1:A:813:MET:HE3	2.02	0.41
1:A:987:VAL:HG22	1:A:1023:VAL:HG23	2.03	0.41
1:A:2244:ASP:OD2	1:A:2348:ARG:NH1	2.52	0.41
2:B:241:ASP:OD1	2:B:243:THR:OG1	2.26	0.41
2:B:255:MET:HG3	2:B:256:THR:OG1	2.21	0.41
2:B:159:THR:O	2:B:161:HIS:ND1	2.46	0.41
1:A:1269:TRP:CH2	1:A:1341:ILE:HG12	2.56	0.40
1:A:1449:TRP:CD1	1:A:1449:TRP:N	2.88	0.40
1:A:2022:LEU:HD13	1:A:2066:LYS:HE2	2.02	0.40
2:B:67:MET:HB2	2:B:79:ILE:HB	2.02	0.40
3:C:433:MET:O	3:C:437:ILE:HG12	2.21	0.40
3:C:950:PRO:HA	3:C:953:LEU:HD12	2.04	0.40
2:B:57:ILE:HG23	2:B:68:TYR:HB2	2.04	0.40
4:D:33:ASP:OD1	4:D:33:ASP:N	2.53	0.40
1:A:606:CYS:O	1:A:610:PHE:N	2.55	0.40
1:A:947:TYR:HB2	1:A:948:PRO:HD3	2.02	0.40

*Continued on next page...*

Continued from previous page...

Atom-1	Atom-2	Interatomic distance (Å)	Clash overlap (Å)
1:A:1527:ASP:OD1	1:A:1527:ASP:N	2.53	0.40
1:A:2333:ILE:HG13	1:A:2407:LEU:HD13	2.04	0.40
3:C:88:LEU:HD23	3:C:107:LEU:HG	2.03	0.40
1:A:543:LEU:O	1:A:547:LEU:N	2.54	0.40
1:A:759:HIS:O	1:A:763:ASN:ND2	2.34	0.40
1:A:1448:THR:HG22	1:A:1452:LYS:HE3	2.03	0.40
1:A:1523:LEU:HD23	1:A:1523:LEU:HA	1.89	0.40
3:C:29:ASP:OD1	3:C:31:THR:OG1	2.32	0.40
3:C:380:ARG:NH1	3:C:743:ASN:OD1	2.54	0.40

There are no symmetry-related clashes.

## 5.3 Torsion angles [\(i\)](#)

### 5.3.1 Protein backbone [\(i\)](#)

In the following table, the Percentiles column shows the percent Ramachandran outliers of the chain as a percentile score with respect to all PDB entries followed by that with respect to all EM entries.

The Analysed column shows the number of residues for which the backbone conformation was analysed, and the total number of residues.

Mol	Chain	Analysed	Favoured	Allowed	Outliers	Percentiles	
1	A	2046/2347 (87%)	1985 (97%)	61 (3%)	0	100	100
2	B	315/317 (99%)	297 (94%)	18 (6%)	0	100	100
3	C	1137/1672 (68%)	1112 (98%)	25 (2%)	0	100	100
4	D	116/148 (78%)	105 (90%)	11 (10%)	0	100	100
All	All	3614/4484 (81%)	3499 (97%)	115 (3%)	0	100	100

There are no Ramachandran outliers to report.

### 5.3.2 Protein sidechains [\(i\)](#)

In the following table, the Percentiles column shows the percent sidechain outliers of the chain as a percentile score with respect to all PDB entries followed by that with respect to all EM entries.

The Analysed column shows the number of residues for which the sidechain conformation was analysed, and the total number of residues.

Mol	Chain	Analysed	Rotameric	Outliers	Percentiles	
1	A	1529/2056 (74%)	1507 (99%)	22 (1%)	62	82
2	B	268/269 (100%)	264 (98%)	4 (2%)	60	81
3	C	1001/1510 (66%)	989 (99%)	12 (1%)	67	85
4	D	83/135 (62%)	81 (98%)	2 (2%)	44	71
All	All	2881/3970 (73%)	2841 (99%)	40 (1%)	62	82

All (40) residues with a non-rotameric sidechain are listed below:

Mol	Chain	Res	Type
1	A	729	PHE
1	A	821	PHE
1	A	853	TYR
1	A	885	ILE
1	A	1033	GLU
1	A	1061	VAL
1	A	1107	LEU
1	A	1122	PHE
1	A	1329	LEU
1	A	1376	ASP
1	A	1391	ARG
1	A	1425	GLN
1	A	1433	LEU
1	A	1453	LEU
1	A	1572	ASP
1	A	1590	MET
1	A	1626	CYS
1	A	1719	HIS
1	A	2094	VAL
1	A	2123	LEU
1	A	2133	CYS
1	A	2533	THR
2	B	51	THR
2	B	78	ILE
2	B	84	VAL
2	B	292	ASN
3	C	196	LEU
3	C	342	VAL
3	C	417	ASP
3	C	488	LYS
3	C	490	TYR
3	C	491	SER
3	C	509	ASP

*Continued on next page...*

*Continued from previous page...*

Mol	Chain	Res	Type
3	C	520	ILE
3	C	525	GLU
3	C	748	ASN
3	C	835	TYR
3	C	1003	VAL
4	D	91	GLU
4	D	141	ILE

Sometimes sidechains can be flipped to improve hydrogen bonding and reduce clashes. All (30) such sidechains are listed below:

Mol	Chain	Res	Type
1	A	692	ASN
1	A	899	HIS
1	A	1045	ASN
1	A	1205	ASN
1	A	1266	GLN
1	A	1494	HIS
1	A	1741	GLN
1	A	1758	GLN
1	A	1898	ASN
1	A	2093	ASN
1	A	2247	HIS
1	A	2395	ASN
2	B	28	GLN
2	B	153	HIS
2	B	225	GLN
3	C	72	HIS
3	C	480	HIS
3	C	658	HIS
3	C	735	HIS
3	C	846	GLN
3	C	885	GLN
3	C	980	GLN
3	C	1438	GLN
3	C	1478	ASN
3	C	1513	GLN
3	C	1536	GLN
3	C	1681	GLN
3	C	1684	GLN
3	C	1686	HIS
4	D	99	ASN

### 5.3.3 RNA [i](#)

There are no RNA molecules in this entry.

### 5.4 Non-standard residues in protein, DNA, RNA chains [i](#)

There are no non-standard protein/DNA/RNA residues in this entry.

### 5.5 Carbohydrates [i](#)

There are no oligosaccharides in this entry.

### 5.6 Ligand geometry [i](#)

Of 1 ligands modelled in this entry, 1 is monoatomic - leaving 0 for Mogul analysis.

There are no bond length outliers.

There are no bond angle outliers.

There are no chirality outliers.

There are no torsion outliers.

There are no ring outliers.

No monomer is involved in short contacts.

### 5.7 Other polymers [i](#)

There are no such residues in this entry.

### 5.8 Polymer linkage issues [i](#)

There are no chain breaks in this entry.

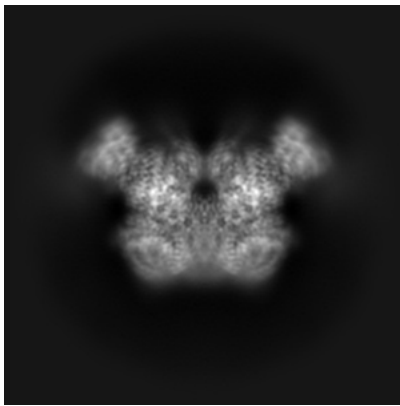
## 6 Map visualisation [i](#)

This section contains visualisations of the EMDB entry EMD-73991. These allow visual inspection of the internal detail of the map and identification of artifacts.

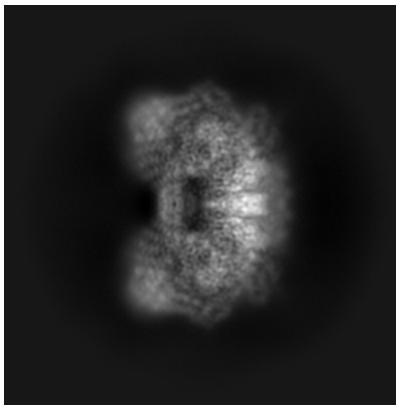
Images derived from a raw map, generated by summing the deposited half-maps, are presented below the corresponding image components of the primary map to allow further visual inspection and comparison with those of the primary map.

### 6.1 Orthogonal projections [i](#)

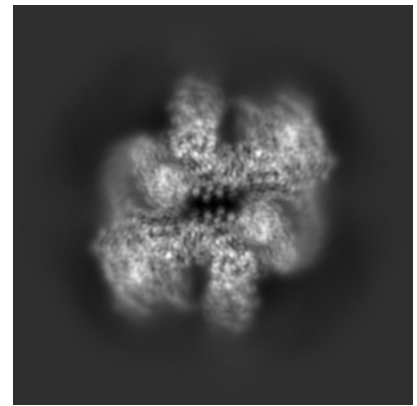
#### 6.1.1 Primary map



X

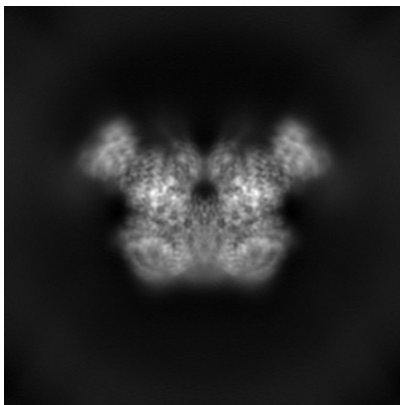


Y

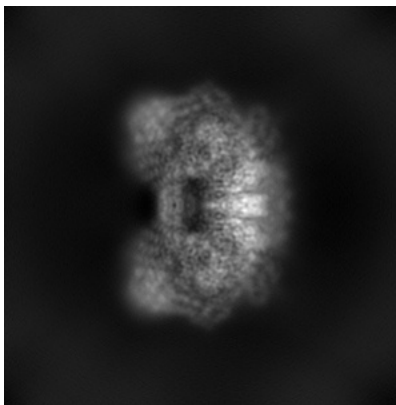


Z

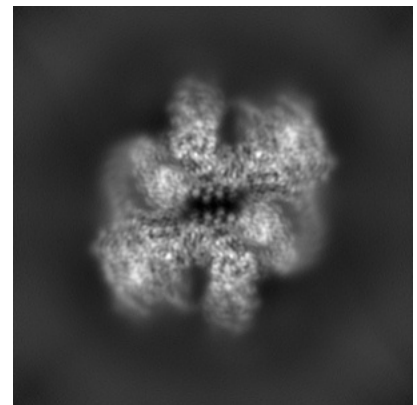
#### 6.1.2 Raw map



X



Y

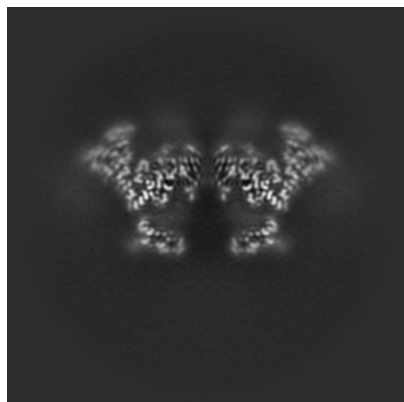


Z

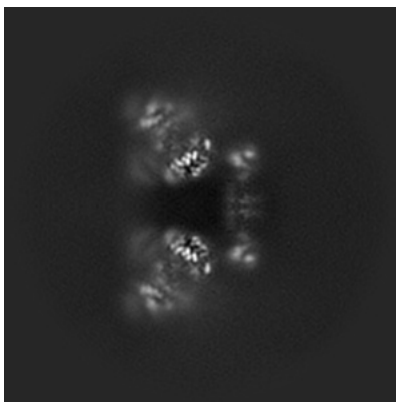
The images above show the map projected in three orthogonal directions.

## 6.2 Central slices [i](#)

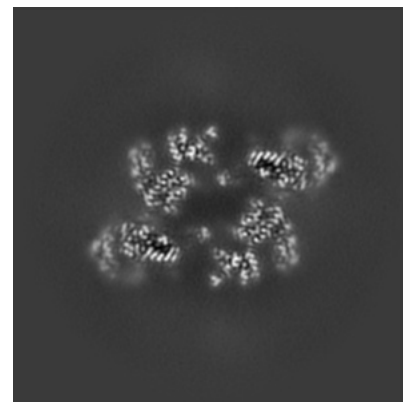
### 6.2.1 Primary map



X Index: 153

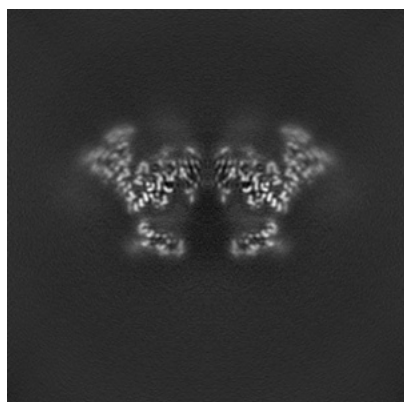


Y Index: 153

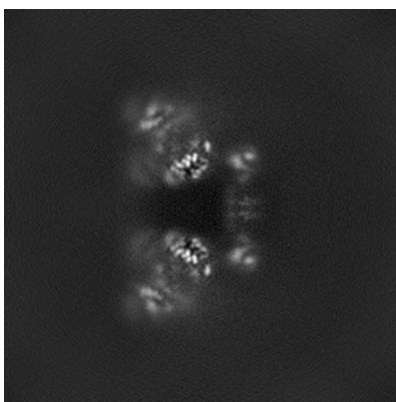


Z Index: 153

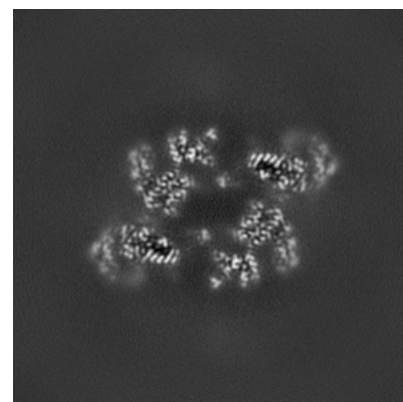
### 6.2.2 Raw map



X Index: 153



Y Index: 153

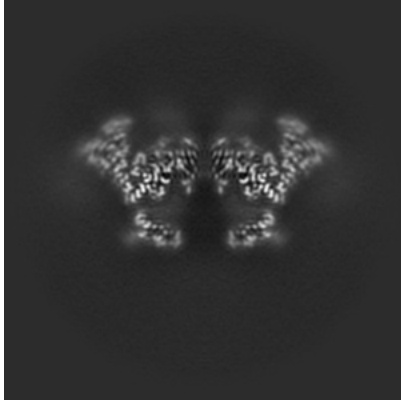


Z Index: 153

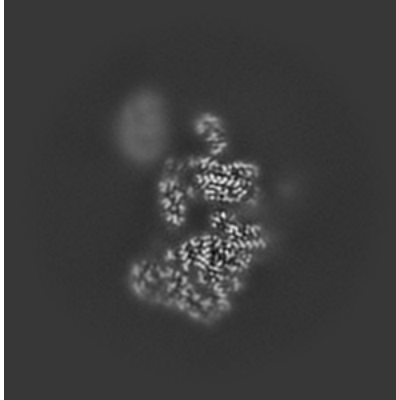
The images above show central slices of the map in three orthogonal directions.

## 6.3 Largest variance slices [i](#)

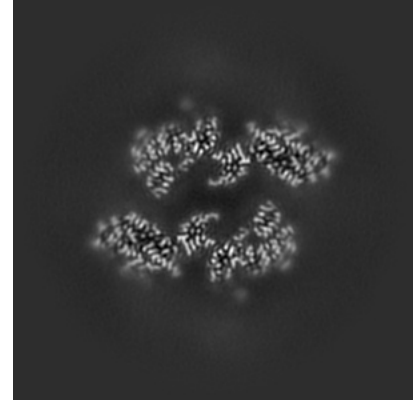
### 6.3.1 Primary map



X Index: 153

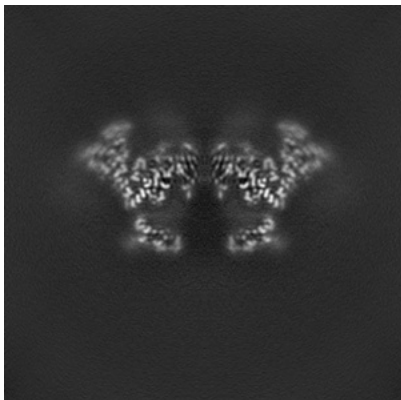


Y Index: 115

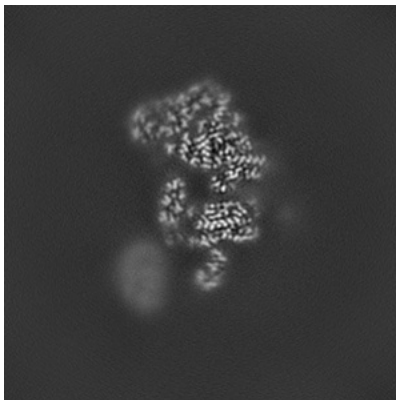


Z Index: 161

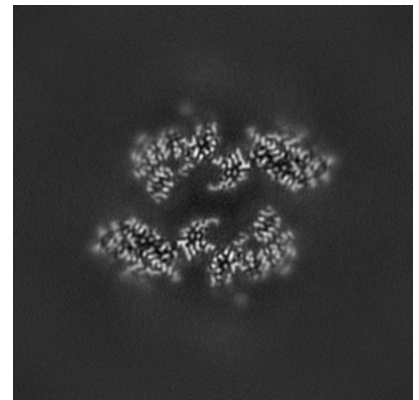
### 6.3.2 Raw map



X Index: 153



Y Index: 191

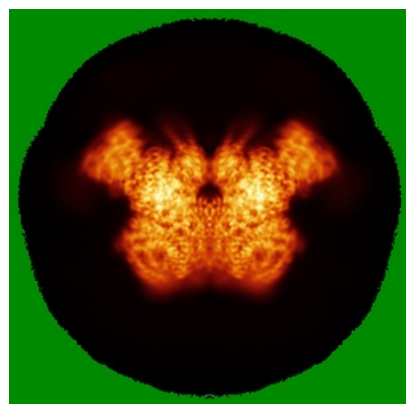


Z Index: 161

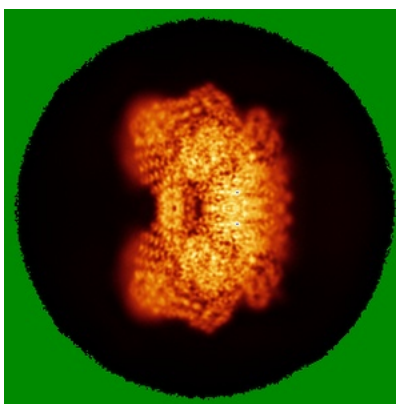
The images above show the largest variance slices of the map in three orthogonal directions.

## 6.4 Orthogonal standard-deviation projections (False-color) [i](#)

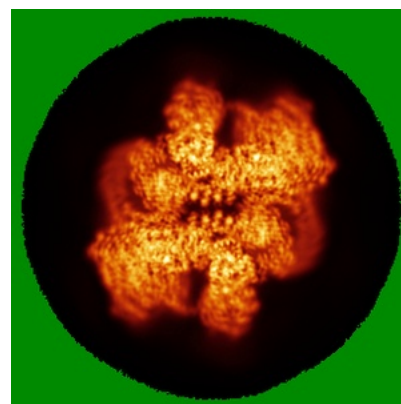
### 6.4.1 Primary map



X

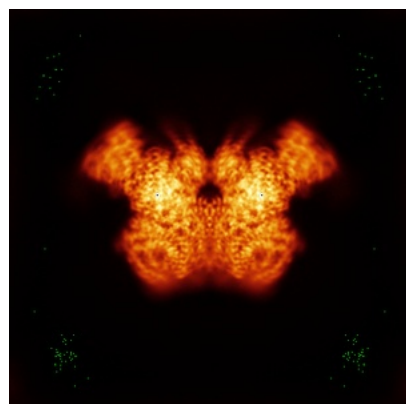


Y

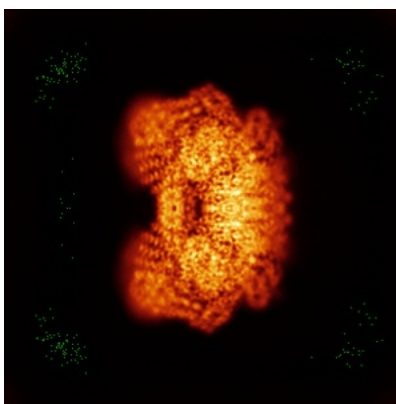


Z

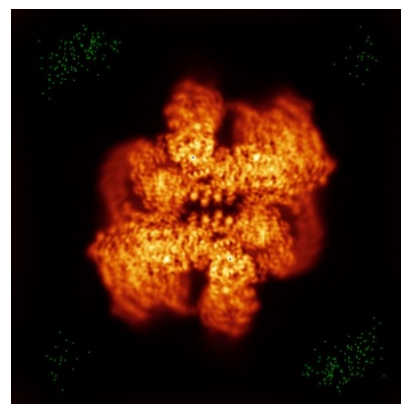
### 6.4.2 Raw map



X



Y



Z

The images above show the map standard deviation projections with false color in three orthogonal directions. Minimum values are shown in green, max in blue, and dark to light orange shades represent small to large values respectively.



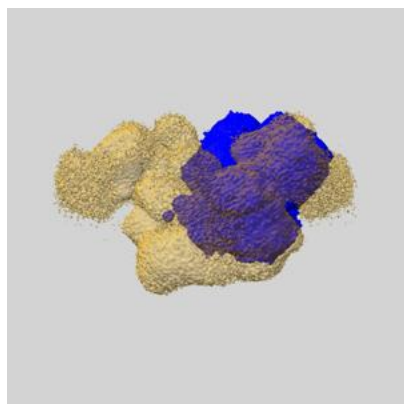
## 6.6 Mask visualisation [i](#)

This section shows the 3D surface view of the primary map at 50% transparency overlaid with the specified mask at 0% transparency

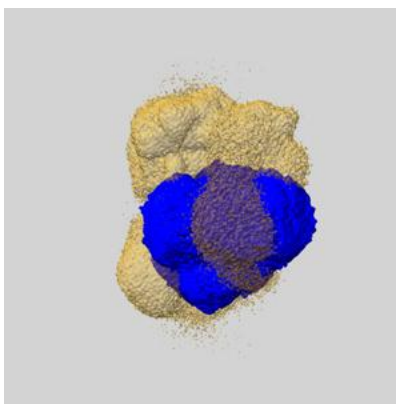
A mask typically either:

- Encompasses the whole structure
- Separates out a domain, a functional unit, a monomer or an area of interest from a larger structure

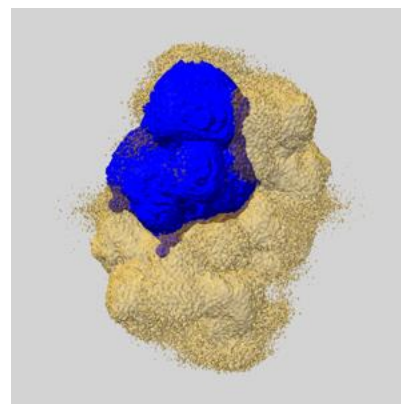
### 6.6.1 emd\_73991\_msk\_1.map [i](#)



X

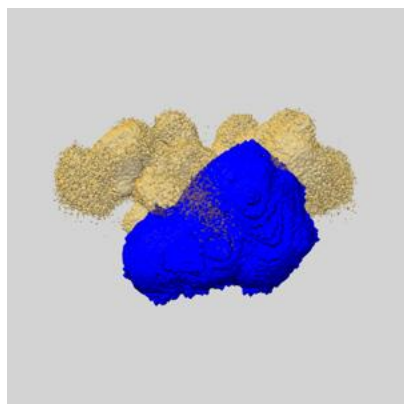


Y

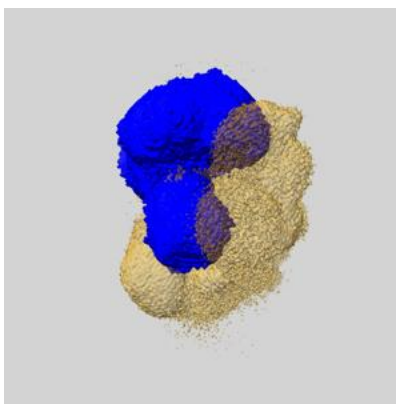


Z

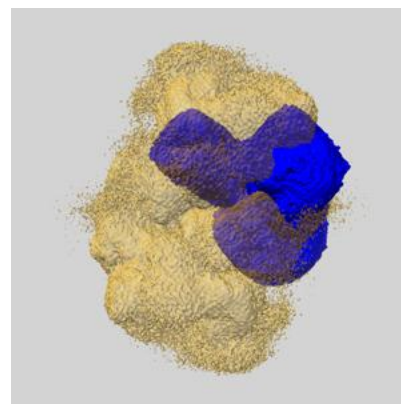
### 6.6.2 emd\_73991\_msk\_2.map [i](#)



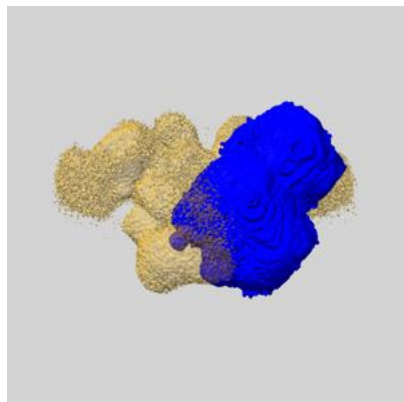
X



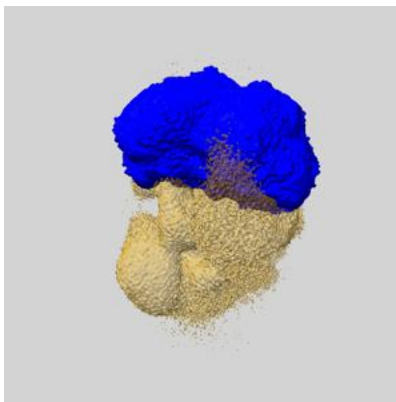
Y



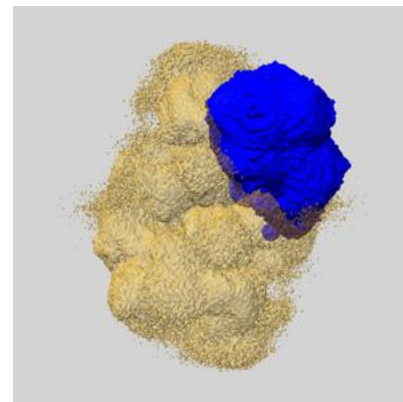
Z

6.6.3 emd\_73991\_msk\_3.map [i](#)

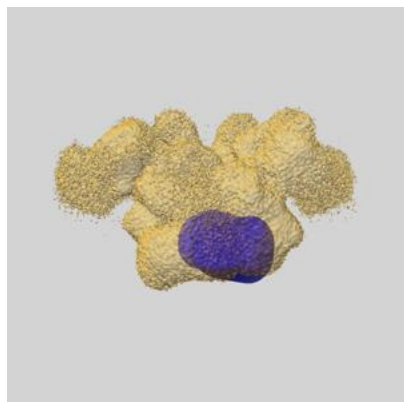
X



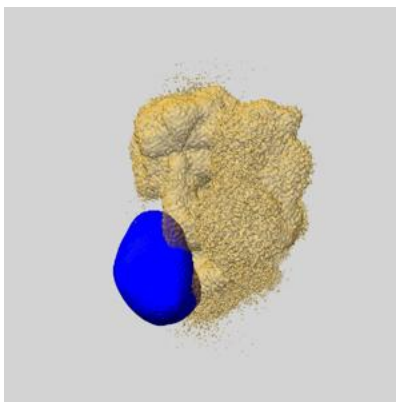
Y



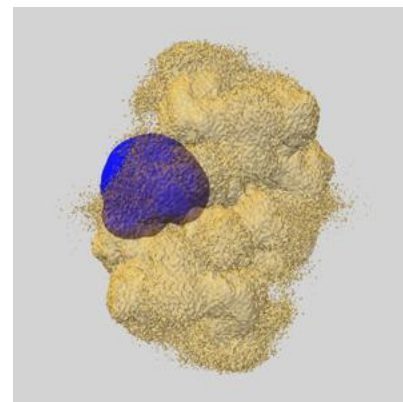
Z

6.6.4 emd\_73991\_msk\_4.map [i](#)

X



Y

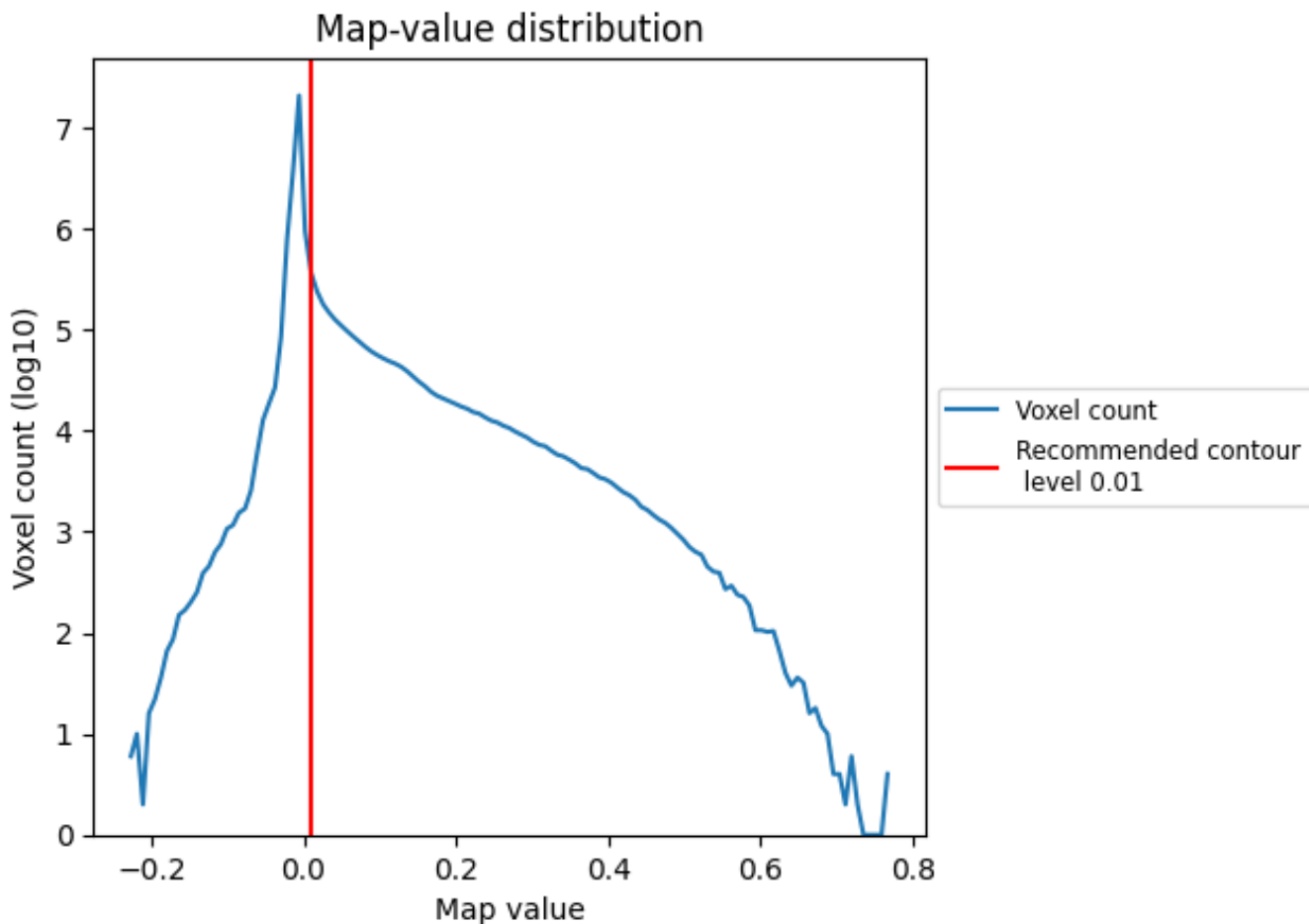


Z

## 7 Map analysis [i](#)

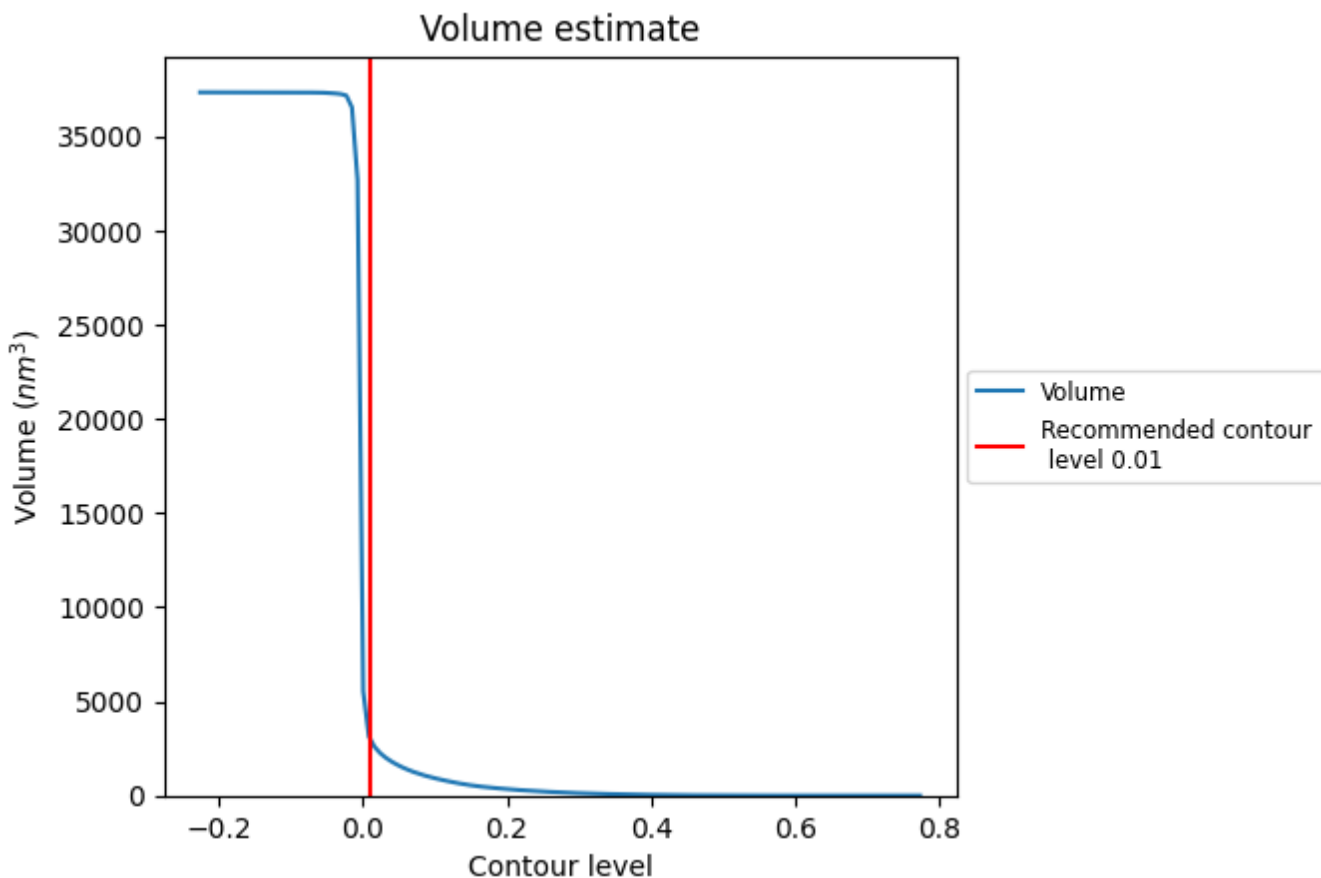
This section contains the results of statistical analysis of the map.

### 7.1 Map-value distribution [i](#)



The map-value distribution is plotted in 128 intervals along the x-axis. The y-axis is logarithmic. A spike in this graph at zero usually indicates that the volume has been masked.

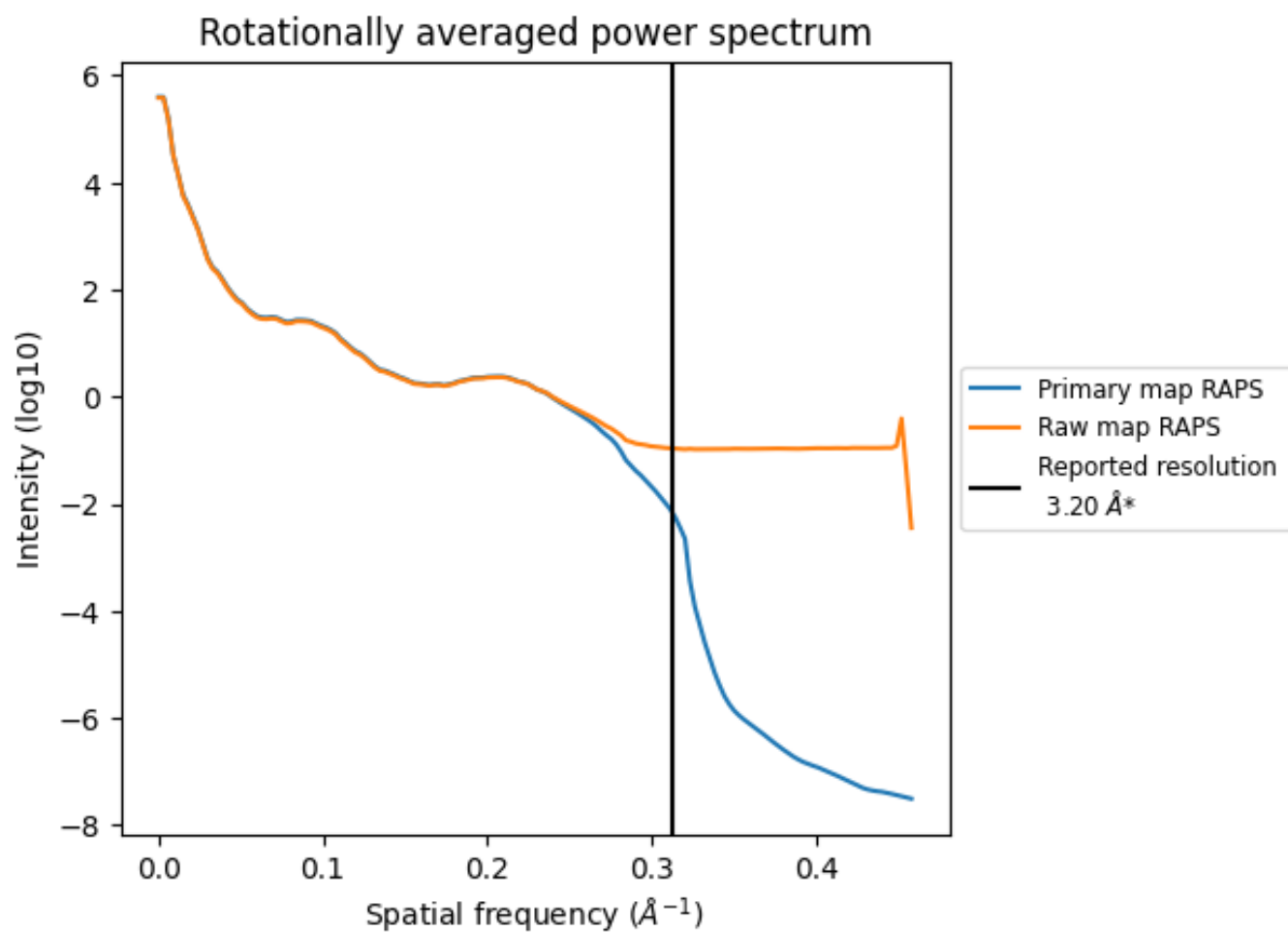
## 7.2 Volume estimate [i](#)



The volume at the recommended contour level is 2999 nm<sup>3</sup>; this corresponds to an approximate mass of 2709 kDa.

The volume estimate graph shows how the enclosed volume varies with the contour level. The recommended contour level is shown as a vertical line and the intersection between the line and the curve gives the volume of the enclosed surface at the given level.

### 7.3 Rotationally averaged power spectrum [i](#)

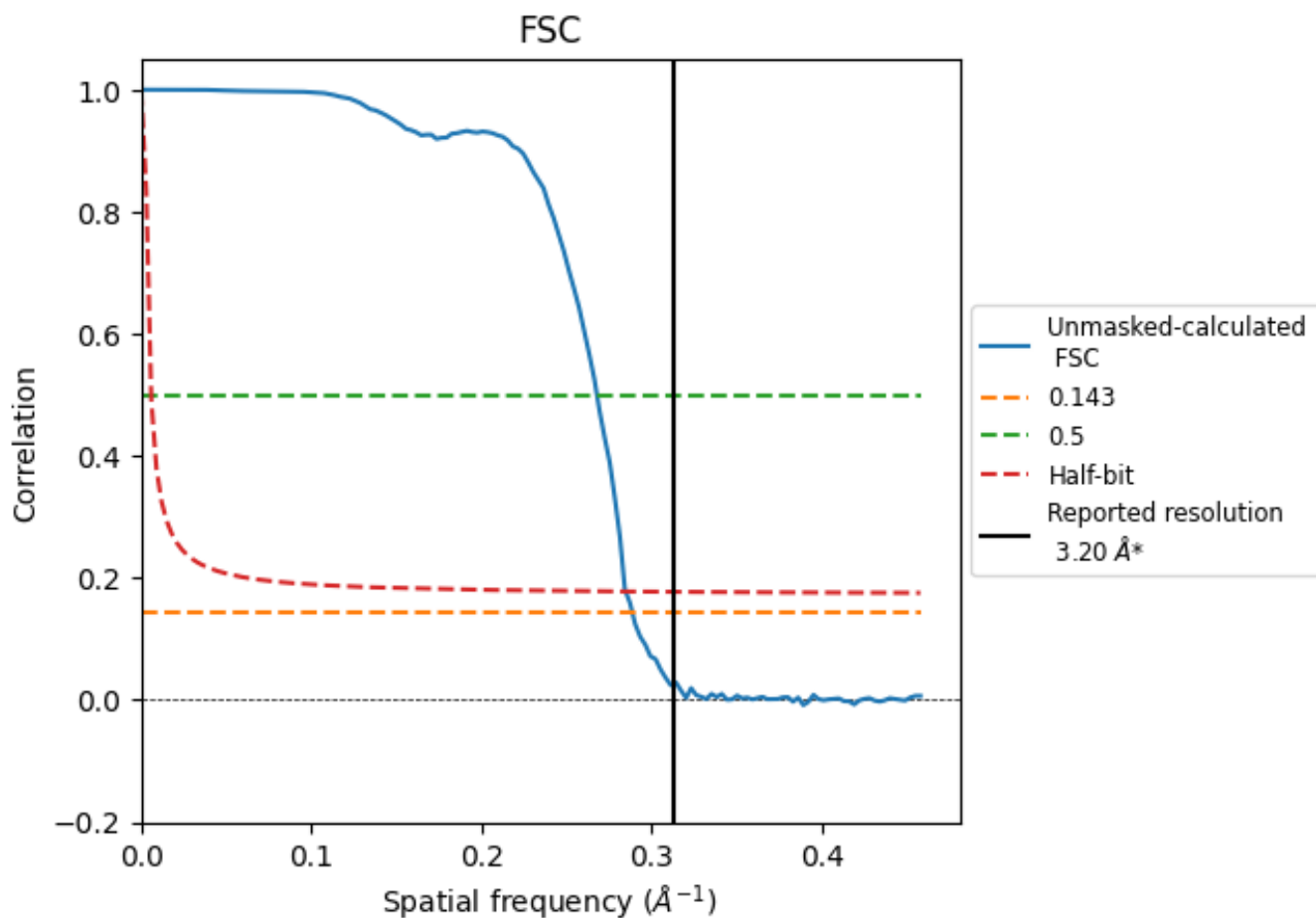


\*Reported resolution corresponds to spatial frequency of 0.312 Å<sup>-1</sup>

## 8 Fourier-Shell correlation [\(i\)](#)

Fourier-Shell Correlation (FSC) is the most commonly used method to estimate the resolution of single-particle and subtomogram-averaged maps. The shape of the curve depends on the imposed symmetry, mask and whether or not the two 3D reconstructions used were processed from a common reference. The reported resolution is shown as a black line. A curve is displayed for the half-bit criterion in addition to lines showing the 0.143 gold standard cut-off and 0.5 cut-off.

### 8.1 FSC [\(i\)](#)



\*Reported resolution corresponds to spatial frequency of 0.312 Å<sup>-1</sup>

## 8.2 Resolution estimates [i](#)

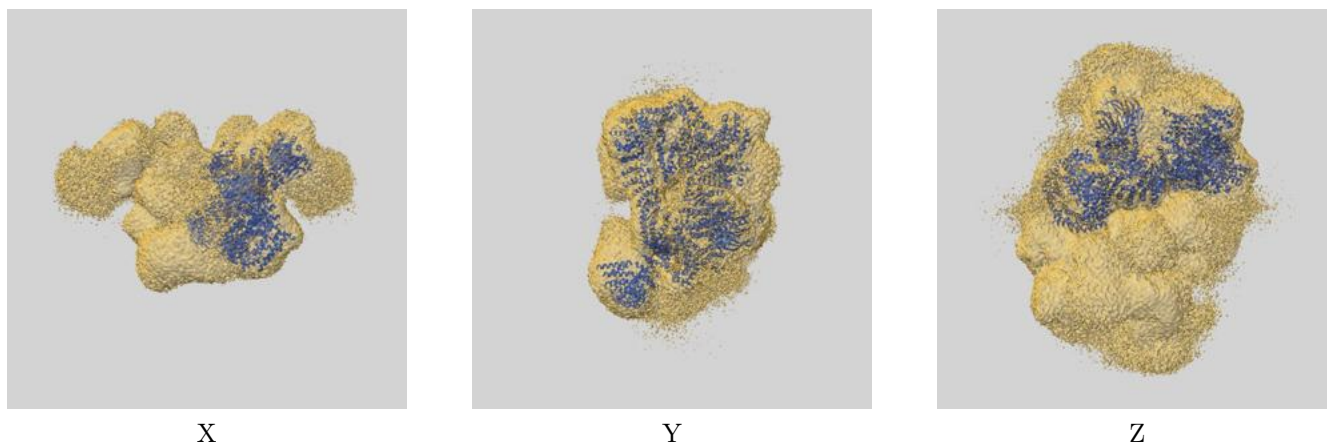
Resolution estimate (Å)	Estimation criterion (FSC cut-off)		
	0.143	0.5	Half-bit
Reported by author	3.20	-	-
Author-provided FSC curve	-	-	-
Unmasked-calculated*	3.47	3.73	3.51

\*Resolution estimate based on FSC curve calculated by comparison of deposited half-maps.

## 9 Map-model fit [i](#)

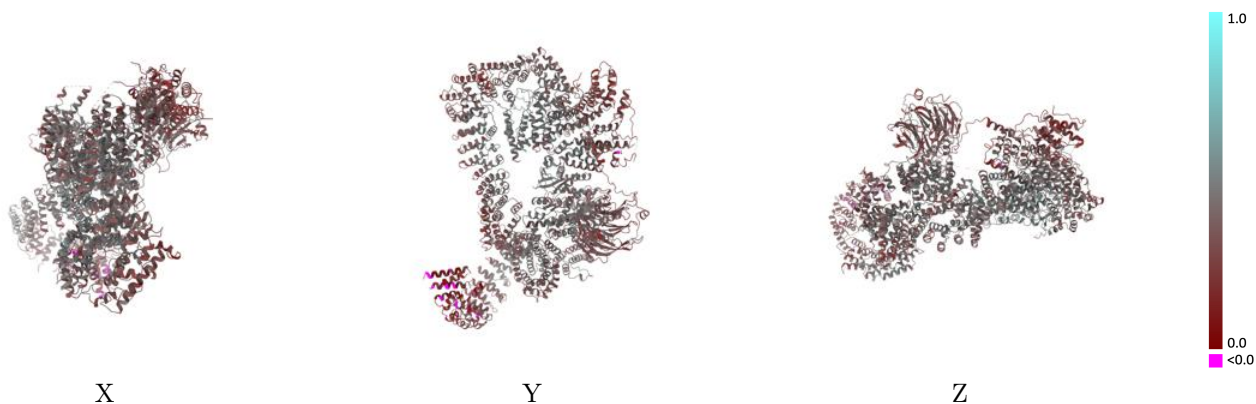
This section contains information regarding the fit between EMDB map EMD-73991 and PDB model 9ZBJ. Per-residue inclusion information can be found in section 3 on page 4.

### 9.1 Map-model overlay [i](#)



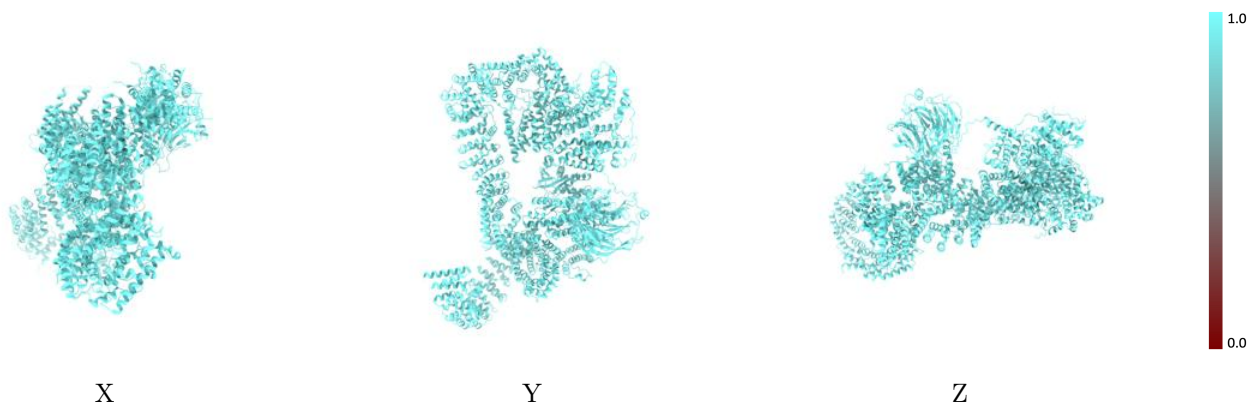
The images above show the 3D surface view of the map at the recommended contour level 0.01 at 50% transparency in yellow overlaid with a ribbon representation of the model coloured in blue. These images allow for the visual assessment of the quality of fit between the atomic model and the map.

## 9.2 Q-score mapped to coordinate model [i](#)



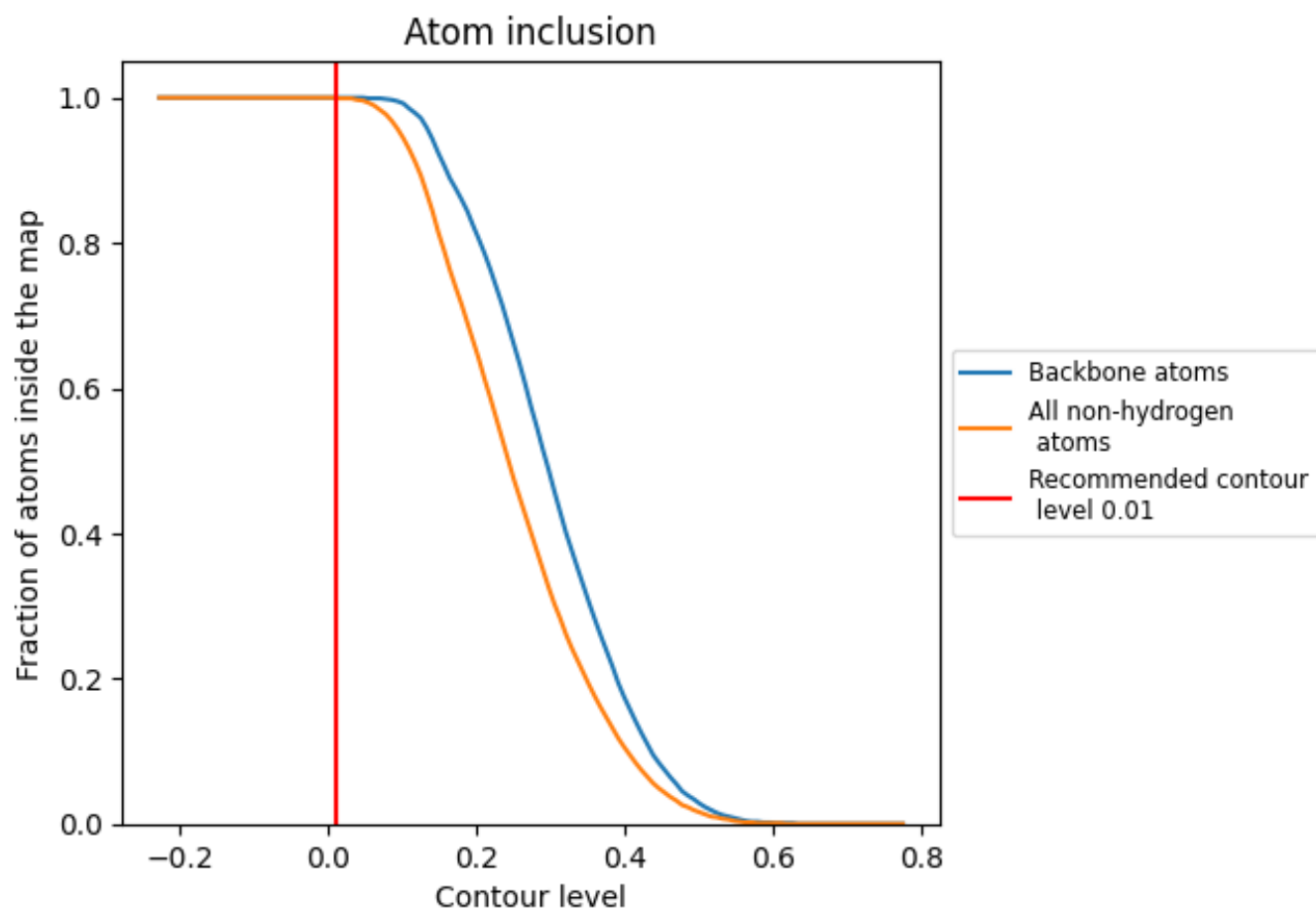
The images above show the model with each residue coloured according to its Q-score. This shows their resolvability in the map with higher Q-score values reflecting better resolvability. Please note: Q-score is calculating the resolvability of atoms, and thus high values are only expected at resolutions at which atoms can be resolved. Low Q-score values may therefore be expected for many entries.

## 9.3 Atom inclusion mapped to coordinate model [i](#)



The images above show the model with each residue coloured according to its atom inclusion. This shows to what extent they are inside the map at the recommended contour level (0.01).







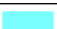



## 9.4 Atom inclusion [i](#)



At the recommended contour level, 100% of all backbone atoms, 100% of all non-hydrogen atoms, are inside the map.

## 9.5 Map-model fit summary [i](#)

The table lists the average atom inclusion at the recommended contour level (0.01) and Q-score for the entire model and for each chain.

Chain	Atom inclusion	Q-score
All	 1.0000	 0.3840
A	 0.9990	 0.3880
B	 1.0000	 0.3370
C	 1.0000	 0.3940
D	 1.0000	 0.3200

